

BROCADE



Improve Contract Manufacturing Partnerships by Ensuring Consensus Through Globalized Change Processes

Joseph Barrows

Manager, Configuration and Data Management

April 14, 2008

Legal Disclaimer

- All or some of the products detailed in this presentation may still be under development and certain specifications, including but not limited to, release dates, prices, and product features, may change. The products may not function as intended and a production version of the products may never be released. Even if a production version is released, it may be materially different from the pre-release version discussed in this presentation.
- NOTHING IN THIS PRESENTATION SHALL BE DEEMED TO CREATE A WARRANTY OF ANY KIND, EITHER EXPRESS OR IMPLIED, STATUTORY OR OTHERWISE, INCLUDING BUT NOT LIMITED TO, ANY IMPLIED WARRANTIES OF MERCHANTABILITY, FITNESS FOR A PARTICULAR PURPOSE, OR NONINFRINGEMENT OF THIRD PARTY RIGHTS WITH RESPECT TO ANY PRODUCTS AND SERVICES REFERENCED HEREIN.
- Brocade, Fabric OS, File Lifecycle Manager, MyView, and StorageX are registered trademarks and the Brocade B-wing symbol, DCX, and SAN Health are trademarks of Brocade Communications Systems, Inc., in the United States and/or in other countries. All other brands, products, or service names are or may be trademarks or service marks of, and are used to identify, products or services of their respective owners.



Brocade



Brocade Overview

- Brocade is a leading provider of data center networking solutions that help organizations connect, share, and manage their information. Organizations that use Brocade products and services are better able to optimize their IT infrastructures and ensure compliant data management.
 - Founded: 1995
 - Incorporated: 1999, Delaware
 - IPO: 1999 (NASDAQ: BRCD)
 - Headquarters: San Jose, Geneva, Singapore
 - Approximately 2400 employees worldwide
 - Revenues of \$1.24B in FY '07
 - Acquisitions: Strategic Business Systems, McDATA, Silverback Systems, NuView



Brocade Overview

– Global Offices

- Americas: Brazil, Canada, Mexico, and the U.S.
- APAC: Australia, China, Taiwan, India, Japan, Korea, and Singapore
- EMEA: Austria, Belgium, Denmark, Dubai, France, Germany, Holland, Italy, Spain, Switzerland, and the U.K.

– R&D Centers

- Americas: Colorado, Minnesota and Oregon
- APAC: Bangalore, India and Shenzhen, China



Four Divisions Focused on Growth

- **Data Center Infrastructure Division:**

- This division focuses on the Brocade Data Center Fabric (DCF) architecture, a framework for designing, building, and managing next-generation data centers. The division's products help organizations simplify connectivity, optimize performance, and reduce cost as part of a single, converged data center infrastructure.

- **Files Division:**

- This division develops products for file-based applications, databases, documents, images, and multimedia—driving enterprise file consolidation, transparent file mobility, replication, and access security.

- **Server Division:**

- This division develops products that provide new server connectivity options through unmatched hardware capabilities along with unique software configurability. As a result, IT organizations can implement end-to-end management across next-generation data centers based on the Brocade DCF architecture.

- **Services, Support, and Solutions Division:**

- Brocade develops industry-leading services, support, and solutions for servers, storage, applications, and data—helping organizations scale effectively, improve performance, and connect applications throughout enterprise data centers.



The World's Most Demanding Customers Rely on Brocade Solutions



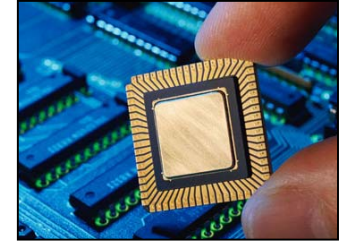
90+% of Automobile and Parts Manufacturers, including the Top 10



90+% of Commercial and Investment banks, including the Top 10



90+% of Chemical Companies, including the Top 10



90+% of Electronics and Electrical Manufacturers, including the Top 10



90+% of Healthcare and Pharmaceutical Companies, including the Top 10



90+% of Industrial and Farm Equipment Manufacturers, including the Top 10



90+% of Energy, Petroleum, and Mining Firms, including the Top 10



90+% of Telecom Providers and Suppliers, including the Top 10

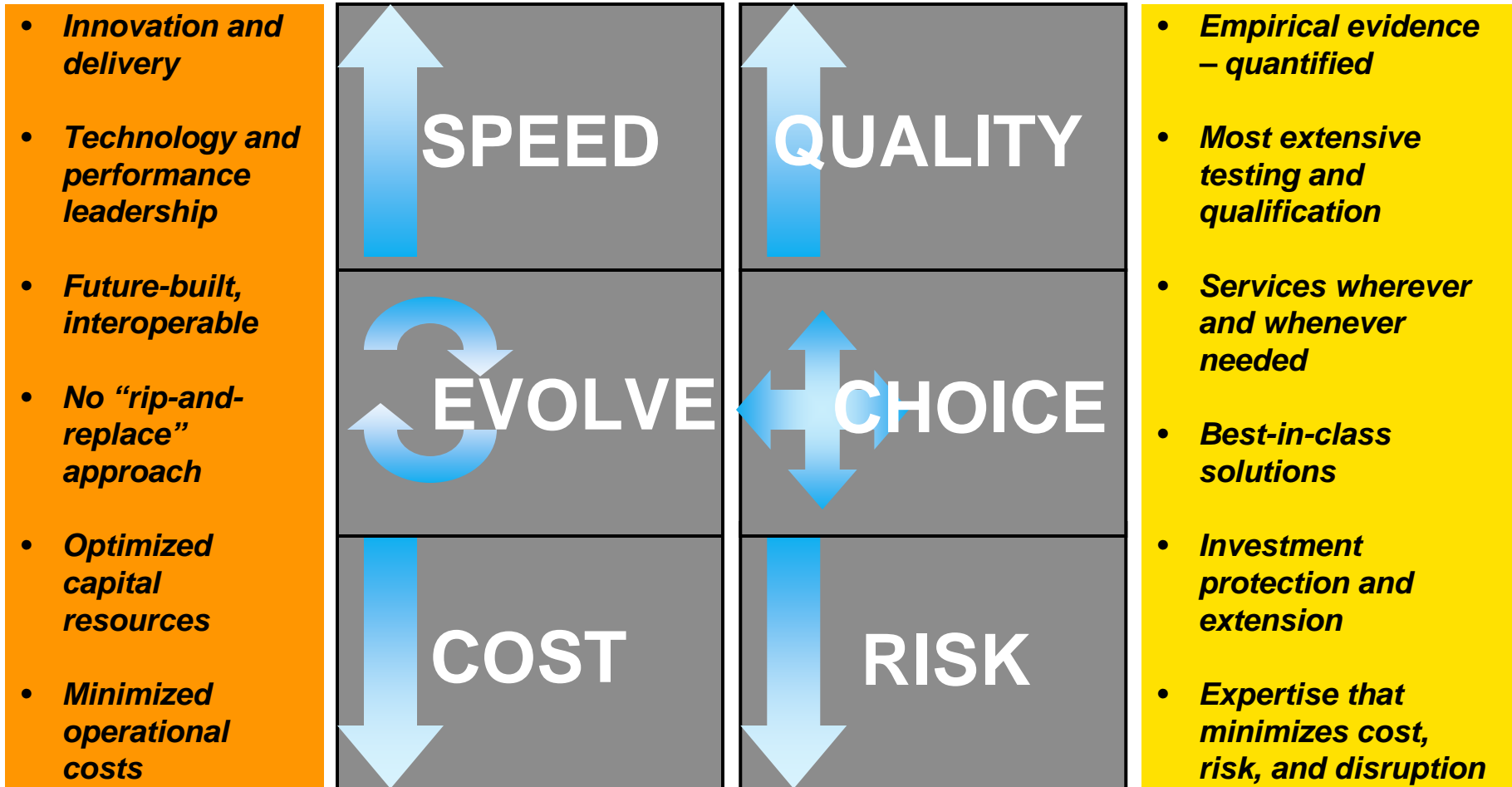
Source – percentages estimated based on Global 2000 companies

A Strong Partner Ecosystem and Growth

- Brocade continues to participate in high-growth market segments for data center environments
- The Brocade business strategy and initiatives are aligned to key customer requirements and business challenges
- Brocade has strategic partnerships with the industry's foremost IT companies



Brocade Is Committed to Customer Satisfaction



Brocade Partners with the World's Leading Technology Companies

OEM Partners



Solution Partners



BROCADE



Implementing a global collaborative
change process outside the four walls



Challenges in moving Manufacturing outside the four Walls

- Security
- Proper notification by product impact
 - Limited visibility
- Understand implementation intent
 - Understanding of individual CM process requirements
- As designed vs. As built
 - Agile “as designed” -> CM at a different level



Brocade's Challenges

- OEM Partners had zero visibility on “change” implementation
- No way of identifying or tracking “Cost of Change”
 - At the mercy of your Contract Manufacturer
- CM expected to build to “As designed” drove Deviations
- Difficult to determine configuration of units



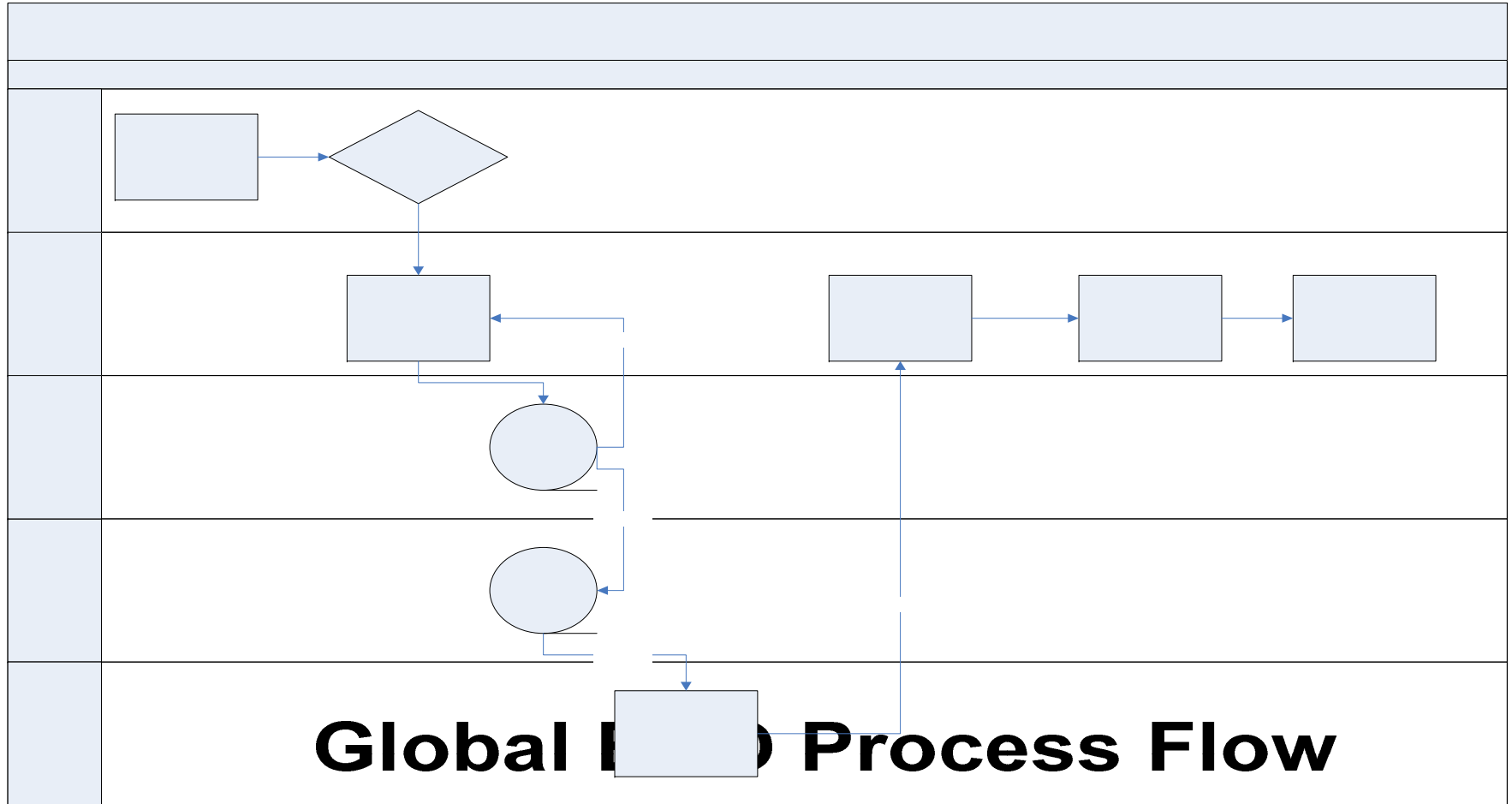
BROCADE



Streamlining product record change processes while incurring substantial growth through Acquisition



Streamline the processes



BROCADE



Gaining visibility on cost containment
that is beyond your control



Gaining visibility on cost

- Global understanding of Disposition terms
 - Rework, Scrap, Use 'as is'
- Impact to individual Bill of Material structures
 - Effectivity date planning
- Information sharing on MPS vs. Inventory and WIP
 - Lead time, Purchase Orders, Finished Goods Inv.
- External customer expectations
 - Customized implementation per customer



CM Implementation Review

The CM representative will have rights to edit the Cover Page tab Page Three section for Implementation Plan which is where the overall effectivity plan will be tracked and estimated cost of rework, scrap and new tooling based on change dispositons.

Page Three

CHANGE IMPLEMENTATION

Implementation Plan:

Pre-Req ECO(s):

Concurrent ECOs:

COST OF CHANGE

Estimated Rework Cost:

Estimated Scrap Cost:

Estimated Tooling Cost:

Estimated Cost of ECO: \$

Actual Rework Cost:

Actual Scrap Cost:

Actual Tooling Cost:

Actual Cost of ECO: \$

Accounting # of ECO:

Affected items tab

Agile Product Lifecycle Management (PLM) - Welcome , Joseph Barrows - Microsoft Internet Explorer

Search Results ▶ Sustaining ECO: E117...
Sustaining ECO: E11762
 Product Affected: 4920 DL
 Update Dell units with FOS 5.3.0a.
 No CD changes are required in accessory kit.

Pending Implementation

Approve Reject Comment Next Status Actions

Cover Page **Affected Items** Workflow Attachments History

Selected: 0 of 17 Page: 1 of 1

Item Type	Item Category	Part Number	Description	Old Lifecycle Phase	Old Rev	Obsolete Date	New Rev	Effective Date
51-Program File	Software	51-1000190-02	PGM,CSD,4900,DL	Production	A	11/30/2007 12:00:00 AM PST	B	11/30/2007 12:00:00 AM PST
51-Program File	Software	51-1000190-03	PGM,CSD,4900,FOS 5.3.0A,DL				A	11/30/2007 12:00:00 AM PST
53-Printed Material	Guide	53-1000553-01	GDE,INST,ISL TRUNKING,4900,DL	Production	A	11/30/2007 12:00:00 AM PST	B	11/30/2007 12:00:00 AM PST
53-Printed Material	Guide	53-1000553-02	GDE,INST,ISL TRUNKING,4900,DL				A	11/30/2007 12:00:00 AM PST
80-Top Mfg	Software	80-1000707-01	S/W,ISL TRUNKING,4900,PP,DL	Production	A	11/30/2007 12:00:00 AM PST	B	11/30/2007 12:00:00 AM PST
80-Top Mfg	Software	80-1000707-02	S/W,ISL TRUNKING,4900,PP,DL				A	11/30/2007 12:00:00 AM PST
80-Top Mfg	Assy,Top	80-1000708-02	SW4920, 32PORT, 2P/S, 3 FAN, 32 SFPS,DL	Production	A	11/30/2007 12:00:00 AM PST	B	11/30/2007 12:00:00 AM PST
80-Top Mfg	Assy,Top	80-1000708-03	SW4920, 32PORT, 2P/S, 3 FAN, 32 SFPS,DL				A	11/30/2007 12:00:00 AM PST
80-Top Mfg	Assy,Top	80-1000709-02	SW4920, 32PORT, 2P/S, 3 FAN, 32 SFPS,DL	Production	A	11/30/2007 12:00:00 AM PST	B	11/30/2007 12:00:00 AM PST
80-Top Mfg	Assy,Top	80-1000709-03	SW4920, 32PORT, 2P/S, 3 FAN, 32 SFPS,DL				A	11/30/2007 12:00:00 AM PST
80-Top Mfg	Assy,Top	80-1000711-02	FRU, SW4920, 32PORT, 2P/S, 3 FAN, NO SFPS, DL	Production	A	11/30/2007 12:00:00 AM PST	B	11/30/2007 12:00:00 AM PST
80-Top Mfg	Assy,Top	80-1000711-03	FRU, SW4920, 32PORT, 2P/S, 3 FAN, NO SFPS, DL				A	11/30/2007 12:00:00 AM PST
CSD-Customer Specification Document	Controlled Documents	CSD-00334-01	CSD, SW4900, DL	Production	D	11/30/2007 12:00:00 AM PST	E	11/30/2007 12:00:00 AM PST
Assy Top Mktg	Top Marketing Assembly	DL-4920-0001	SW4920, 32PORT, 2P/S, 3 FAN, 32 SFPS,DL	Production	B	11/30/2007 12:00:00 AM PST	C	11/30/2007 12:00:00 AM PST

start 4 Microsoft Office O... Agile Product Lifecyd... Agile Product Lifecyd... Microsoft PowerPoint ... Local intranet 11:35 AM



Affected items tab cont'

Search Results ▶ Sustaining ECO: E117...

Sustaining ECO: E11762
 Product Affected: 4920 DL
 Update Dell units with FOS 5.3.0a.
 No CD changes are required in accessory kit.

Pending Implementation

Approve Relact Comment Next Status Actions

Cover Page **Affected Items** Workflow Attachments History

Edit Reason Add Bulk Change Selected: 0 of 17 Page: 1 of 1

Lifecycle Phase	Change Level	On Order	Stock	WIP	FGI	Distribution Centers	Hubs	Field Units	ServiceReturn	Notes
Superceded	Non-Interchangeable	Rework	Use As Is	Use As Is	Use As Is	Use As Is	Use As Is	Use As Is	Rework	
Production	Release	Initial Release	Initial Release	Initial Release	Initial Release	Initial Release	Initial Release	Initial Release	Initial Release	
Superceded	Non-Interchangeable	Rework	Use As Is	Use As Is	Use As Is	Use As Is	Use As Is	Use As Is	Rework	
Production	Release	Initial Release	Initial Release	Initial Release	Initial Release	Initial Release	Initial Release	Initial Release	Initial Release	
Superceded	Non-Interchangeable	Rework	Use As Is	Use As Is	Use As Is	Use As Is	Use As Is	Use As Is	Rework	
Production	Release	Initial Release	Initial Release	Initial Release	Initial Release	Initial Release	Initial Release	Initial Release	Initial Release	
Superceded	Non-Interchangeable	Rework	Use As Is	Use As Is	Use As Is	Use As Is	Use As Is	Use As Is	Rework	Rework to F 5.3.0a
Production	Release	Initial Release	Initial Release	Initial Release	Initial Release	Initial Release	Initial Release	Initial Release	Initial Release	
Superceded	Non-Interchangeable	Rework	Use As Is	Use As Is	Use As Is	Use As Is	Use As Is	Use As Is	Rework	Rework to F 5.3.0a
Production	Release	Initial Release	Initial Release	Initial Release	Initial Release	Initial Release	Initial Release	Initial Release	Initial Release	
Superceded	Non-Interchangeable	Rework	Use As Is	Use As Is	Use As Is	Use As Is	Use As Is	Use As Is	Rework	Rework to F 5.3.0a
Production	Release	Initial Release	Initial Release	Initial Release	Initial Release	Initial Release	Initial Release	Initial Release	Initial Release	
Production	Documentation Only	Documentation	Documentation	Documentation	Documentation	Documentation	Documentation	Documentation	Documentation	
Production	Non-Interchangeable	Rework	Use As Is	Use As Is	Use As Is	Use As Is	Use As Is	Use As Is	Rework	Rework to F 5.3.0a
Production	Non-	Rework	Use As Is	Use As Is	Use As Is	Use As Is	Use As Is	Use As Is	Rework	Rework to F 5.3.0a

Rows per page: 250 Page: 1 of 1



Implementation Planning

Search Results ▶ Sustaining ECO: E117...

Sustaining ECO: E11762
 Product Affected: 4920 DL
 Update Dell units with FOS 5.3.0a.
 No CD changes are required in accessory kit.

Approve Reject Comment Next Status Actions

Cover Page Affected Items Workflow Attachments History

Edit

CHANGE IMPLEMENTATION | COST OF CHANGE

Change Type: Sustaining ECO
 Number: E11762
 Product Line: SW4900
 Change Category: Normal
 Reason Code: Customer Request-Dell
 Description of Change: Product Affected: 4920 DL
 Update Dell units with FOS 5.3.0a.
 No CD changes are required in accessory kit.
 Reason For Change: Dell have requested their units be updated with FOS 5.3.0a.
 Originator: Stewart, John
 Change Analyst: Bosman, Sharon
 Date Originated: 10/19/2007 12:37:34 PM PDT
 Date Released: 11/30/2007 10:31:04 AM PST
 Final Complete Date:
 Status: Pending Implementation
 Workflow: Brocade Global Sustaining WF

Status ^ Top
 Date to CCB: 10/24/2007 12:00:00 AM PDT
 Referenced ECR/Purge number: None

Page Three ^ Top

CHANGE IMPLEMENTATION ^ Top

Implementation Date Tracker:: 03/14/2008 12:00:00 AM PDT
 Implementation Plan: FAI date: 2 weeks from 12/14/07
 Estimate ship date for new rev. are listed below:
 DL-4920-0001 FGI qty. 9 - 3/14/2008
 DL-4920-0002 FGI qty. 14 - 3/14/2008
 XDL-4920-0000 FGI qty. 0 - 12/14/07

Pre-Req ECO(s):
 Concurrent ECOs:

COST OF CHANGE ^ Top

Estimated Rework Cost: \$0
 Estimated Scrap Cost: \$0
 Estimated Tooling Cost: \$0
 Estimated Cost of ECO: \$0
 Actual Rework Cost:
 Actual Scrap Cost:

Cost of Change

Approve | Reject | Comment | Next Status | Actions

Cover Page | Affected Items | Workflow | Attachments | History

Edit

CHANGE IMPLEMENTATION | COST OF CHANGE

Change Type: Sustaining ECO
Number: E11762
Product Line: SW4900
Change Category: Normal
Reason Code: Customer Request-Dell
Description of Change: Product Affected: 4920 DL
Update Dell units with FOS 5.3.0a.
No CD changes are required in accessory kit.
Reason For Change: Dell have requested their units be updated with FOS 5.3.0a.
Originator: Stewart, John
Change Analyst: Bosman, Sharon
Date Originated: 10/19/2007 12:37:34 PM PDT
Date Released: 11/30/2007 10:31:04 AM PST
Final Complete Date:
Status: Pending Implementation
Workflow: Brocade Global Sustaining WF

Status

Date to CCB: 10/24/2007 12:00:00 AM PDT
Referenced ECR/Purge number: None

Page Three

CHANGE IMPLEMENTATION

Implementation Date Tracker:: 03/14/2008 12:00:00 AM PDT
Implementation Plan: FAI date: 2 weeks from 12/14/07
Estimate ship date for new rev. are listed below:
DL-4920-0001 FGI qty. 9 - 3/14/2008
DL-4920-0002 FGI qty. 14 - 3/14/2008
XDL-4920-0000 FGI qty. 0 - 12/14/07

Pre-Req ECO(s):
Concurrent ECOs:

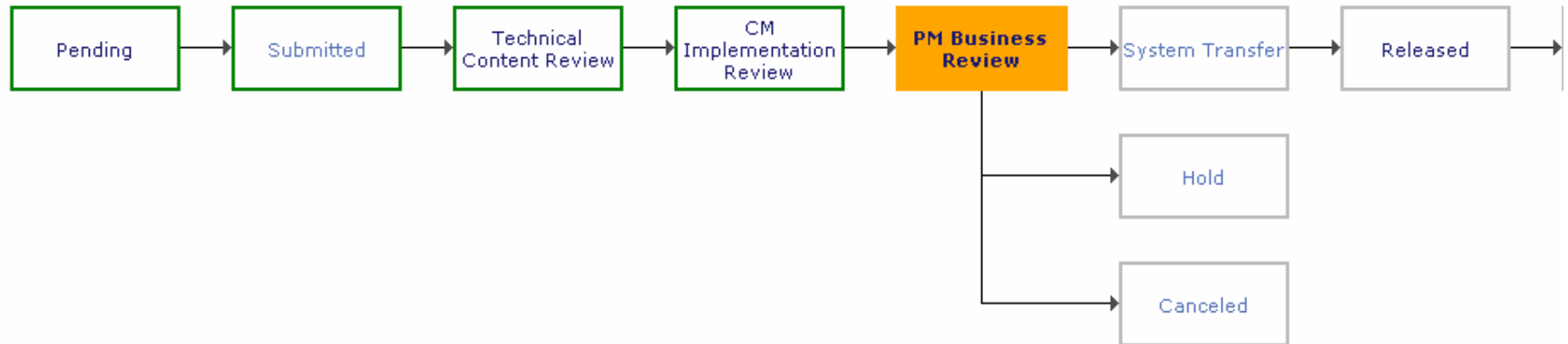
COST OF CHANGE

Estimated Rework Cost: \$0
Estimated Scrap Cost: \$0
Estimated Tooling Cost: \$0
Estimated Cost of ECO: \$0
Actual Rework Cost:
Actual Scrap Cost:
Actual Tooling Cost:
Actual Cost of ECO: \$
Accounting # of ECO:



PM Business Review

Workflow Overview - Brocade Global Sustaining WF



- Once the ECO is approved by all of the CM Implementation Reviewers, the change will be promoted to the PM Business Review
- At this stage only the Product Program Manager will need to approve that based on the intent of the change, the affected items and the CM's implementation planning that it meets budget and design change intent to release
- Up to 3 business days can be used to complete review and update ECO





Released

- Once Change Analyst has completed Business System set up for effectivity dates and item master changes, they will move the package to released
 - At this time all approvers and observers will be notified of the package release
- The ECO will stay at the Released Status until the final effectivity date has cut in on the ECO.
- The Change Analyst will continually monitor with the CM Partner to determine if dates need to be adjusted based on forecast/demand and inventory quantity





Implemented

- Once the effectivity date has occurred and the change has phased into the manufacturer at the highest assembly level, the ECO will be moved to the implemented status, closing out the change process.
- All approvers and observers will be notified upon implementation of the change.

Benefits

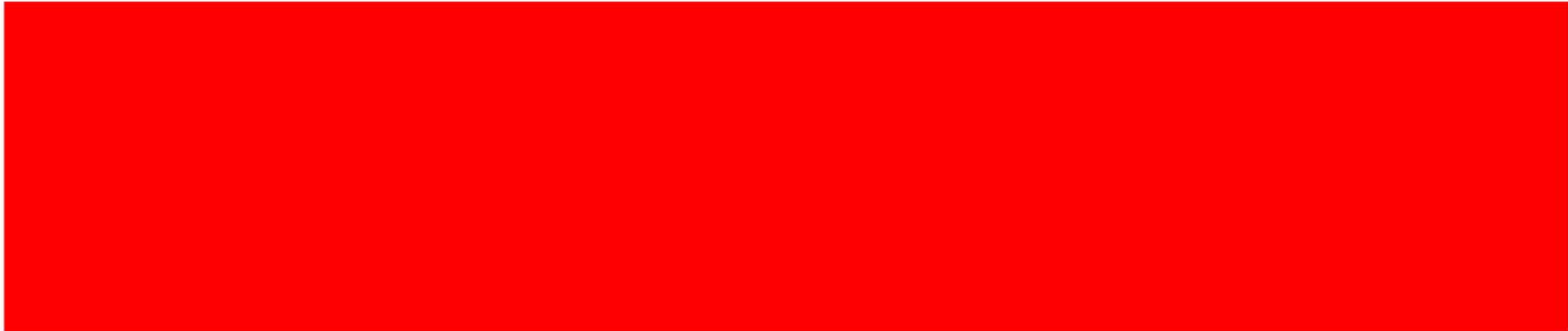
- OEM partners now help drive implementation planning
- CM shares inventory positions
- Opens options to implementation planning/dispositions
- Identifies Cost Impact of Change
- Eliminates Deviations through Effectivity date control
- Configuration of units can be determined at any time



BROCADE



Questions?



BROCADE



THANK YOU

