

Coeur D'Alene Mines: A Successful Oracle Financials Implementation in Latin American Subsidiaries

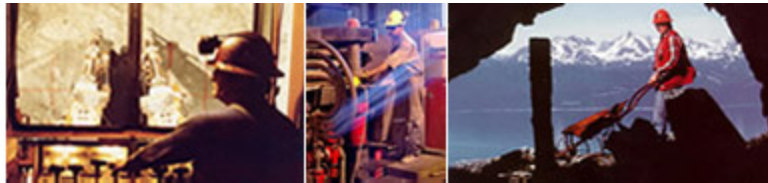
Cecilia Aceti, IT Convergence

Jim Stone, Coeur D'Alene Mines

Agenda

- Introduction
- Latin America Overview
- IT Convergence Overview
- Coeur d'Alene Mines Overview
- Localizations implemented
- Current Implementations: Mexico
- Future Implementations & Migrations
- Conclusions

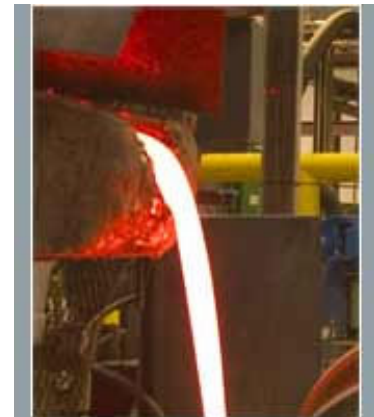
Introduction: Coeur d'Alene Mines



Coeur d' Alene Mines Corporation is one of the world's largest primary silver producer and a growing, low-cost gold producer.

Introduction: New Projects driving Growth

- Just completed construction on one of the world's largest silver mines in **Bolivia**
- Presently constructing another of the world's largest silver mines in **Mexico**
- Operates 2 underground mines in **Chile and Argentina** and 1 surface mine in **Nevada, USA**



Introduction: New Projects driving Growth

- Owns non-operating interests in 2 low-cost mines in **Australia**.
- Owns a major gold project in **Alaska**.
- Conducts exploration activities in **Argentina, Bolivia, Chile, Mexico and Tanzania**.



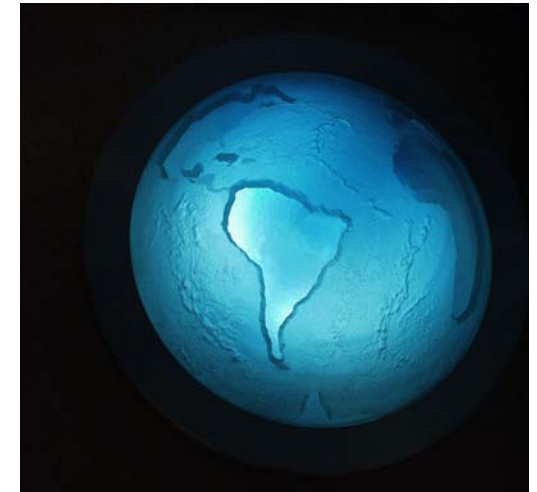
Introduction: High-Level Project Goals

- **Improve ERP functionality** by implementing and integrating Oracle modules in South America as part of an existing Oracle instance in the United States
- **Streamline financial processes and compliance** with local reporting requirements by implementing Oracle Financials



Latin America Overview

- 15,000+ customers in the region
- Strong network of 1,772 Oracle partners
- Favorable economic conditions
- Proximity = same business hours
- Cost-Effectiveness
- Complex region with several challenges
- Volatile economic contexts



IT Convergence Overview



Global enterprise application services provider with core competencies in:

- **Consulting**
- **Support**
- **Development**
- **Education**
- **Web Services**



IT Convergence Overview



ITC offered Coeur d'Alene Mines:

- Extensive experience in performing global Oracle E-Business Suite implementations
- Bilingual Latin American Oracle specialists
- Remote service delivery capability.

Global Reach, Local Expertise

Coeur d'Alene Mines Overview: Properties

Kensington Project, Alaska

Coeur d'Alene Mines HQ

Rochester Mine, Nevada

Palmarejo, Mexico

San Bartolome, Bolivia

Broken Hill, NSW

Cerro Bayo Mine, Chile

Endeavour, NSW

Martha Mine, Argentina



Coeur d'Alene Mines Overview: The Challenges

- Geographic
- Regulatory & Reporting
- Language & Cultural Differences



Coeur d'Alene Mines Overview: Oracle System Implementation History

- Original implementations:
 - Consisted of separate instances for each operation
- Variety of upgrades in each separate instance – costly and time consuming
- New implementations:
 - Implement in multi-org, single instance environment with a plan to migrate stand alone instances to the multi-org, single instance environment

Coeur d'Alene Mines Overview: Project Goals

The objectives are to implement the appropriate applications using a model of:

- Financial, Purchasing, Inventory, and now EAM and Project Costing
- Using standard functionality
- Zero customization with the exception of customizing reports, where required
- Controlling, where possible, at the master/operating unit level.

Coeur d'Alene Mines Overview: Network and communications configuration

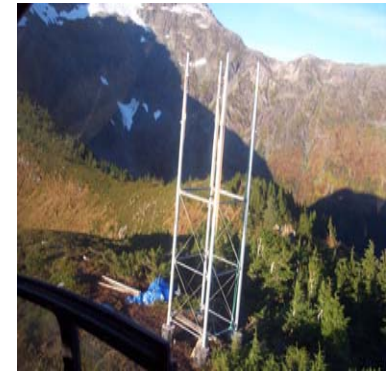
Coeur provides system access to:

- 5 mines sites – extremely remote
- 24 offices – supporting the mine & exploration operations
- Many 'home' offices
- Support the world wide operations during travel
 - thousands of hotels
 - hundreds of airports



Coeur d'Alene Mines Overview: Network and communications configuration (cont)

- Sites are mostly located in **remote and usually mountainous areas**
- Oracle systems are **centrally located in Idaho, USA.**
- The remote locations use **slower microwave and satellite communications** because other forms of network access are just not available.



Coeur d'Alene Mines Overview: How the project is managed within CDM structure

- Project Implementation Philosophy
 - Corporate IT staff - IT Director, IT Business Analyst, IT System Administrator, IT Network Analyst
 - Site Technical Support Staff – 9 at various offices and mine sites
 - Leverage our small IT staff through partnerships with implementation consulting firms

Coeur d'Alene Mines Overview: How the project is managed within CDM structure

- Implementation Team:
 - Coeur IT Project Manager, IT Systems Administrator
 - Coeur Site User Project Manager, Key Application Users, Site Technical Support
 - ITC Project Manager
 - ITC Functional Application Analysts

We have developed a standard configuration model and make small configuration changes for requirements differences for new implementations.



Coeur d'Alene Mines Overview: How initial requirements were gathered

- Gathered at the sites, by the ITC Functional Consultant and the CDM IT Project Manager.
- They gave the functional users an overview of how the Oracle apps worked and how they were integrated.
- Gap analysis was completed
- Requirements document was prepared, reviewed and approved
- Regular Status reported and Issues Managed

Coeur d'Alene Mines Overview: Issues and lessons learned



- Improved Requirements Gathering
- Need to Standardize Processes
- Emphasize the Users Time Commitments
- Emphasize Post Implementation Support Turnover

Localizations implemented

The issues faced in implementing Oracle Financials in Latin American countries can be divided into three general categories:

- Legal Requirements
- Technical Issues
- Business Practices



Localizations implemented: Argentina



- A x I (Inflation Adjustment) on GL (General Ledger)
- A x I (Inflation Adjustment) on FA (Fixed Assets)
- GL – Argentine Daily Book/Major Book
- AP (Accounts Payable) – VAT & CITI/SICORE files (AFIP flat files)

Standard Functionality:

- Financial Statement Generator (FSG) – GL Functionality to generate reports to be sent to Corporate

Custom developed:

- Inventory reports (“remitos”) with specific numeration.

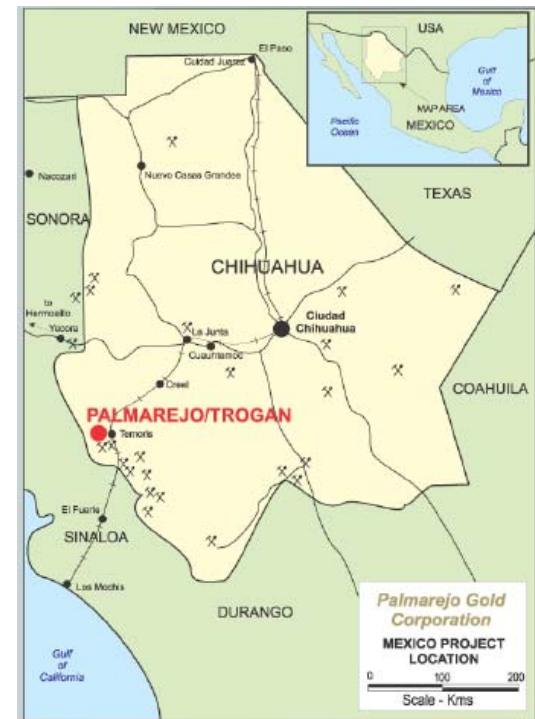
Standard Solution & Customization implemented: Bolivia



- **Standard Solution** applied to Functional currency (from Dollars to Bolivianos)
- **Customization**
 - Required for VAT/Purchases Book (legal requirement), in order to generate POs for AP.
 - Customization of Purchase Order printing

Current Implementations: Mexico

- CDM is currently implementing a newly acquired subsidiary mine site in Chihuahua, Mexico.
- This company had a simple accounting system and no other ERP apps.
- Oracle ERP system is a fresh implementation without any 'legacy' system conversion.



Current Implementations: Mexico



- Using the implementation model from the previous Argentina and Bolivia implementations.
- Using lessons learned and variations in the configurations developed in our other installations in Alaska, Nevada and Chile.
- Mexican local regulatory reports



Future Implementations and Migrations

- Previously, **5 stand-alone instances**, on various versions: 10.7, 11.5.8, 11.5.9, (2) 11.5.10
- Running on **separate servers** and have some **variations** on how they were configured
- Corporate plan is to put all of our sites on **one single instance multi-org instance**

Future Implementations and Migrations

- Now down to **three instances**: (1) 11.5.9 and (2) 11.5.10
- Cerro Bayo, Chile, is the next site to migrate to the multi-org instance this year, followed by Alaska in 2009
- Also beginning an **EAM Asset Management application initiative** starting in Mexico with a roll-out to other sites over the next few years

Conclusion

- New Implementation leads to Business Process Standardization
- Processes streamlined, systems integrated into single Oracle Instance
- Accounting and transaction processes are now centralized and standardized
- Business process improvements as a direct result of the successful implementation of Oracle Applications

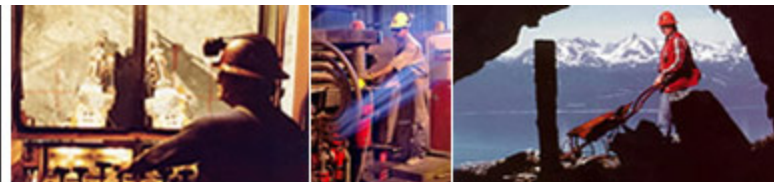
Conclusion

- To successfully implement Oracle Financials in Latin American countries, it is **imperative to understand the idiosyncrasies of the legal environment** of each country and rely on **experienced partners.**
- The real challenge is then **managing the implementation project** so that all **localization issues are proactively addressed.**



Conclusion

- The importance of **continued support** from the **consulting partner** to maintain the current as well as add any additional localizations required, maintains the **integrity** of the localizations within CDM's system for each site.



Q&A



Thanks

