

Solutions for Workforce Optimization



**OAUG Collaborate
Denver, CO**

Presenter:

Jesse Gunder

Director of Corporate Development

Kaba Workforce Solutions

Miramar, FL

Overview

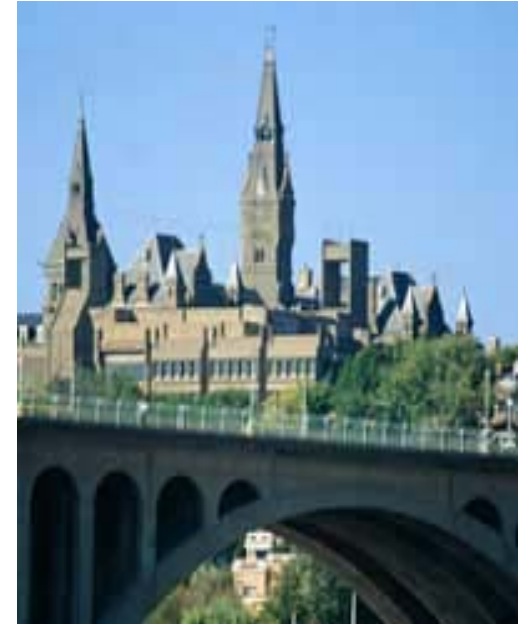
- **Accurate collection and validation of time worked by your employees is a critical element of controlling costs and improving efficiency. A well defined, automated process is essential for a well run organization.**

Agenda/Contents

- **Who is Kaba?**
- **Oracle Certifications**
- **Kaba...what do we do?**
- **Why do companies choose us?**
- **How the technology works**

Kaba is...

- A **global player** in the Time & Labor market
- Internationally active and publicly listed company
- Approximately **10,000 staff** in more than **60 countries**
- About 70 production and sales companies
- Technology leadership with more than **300 patents**
- **145 years of experience** in security technology



A Global Technology Leader

Workforce Management



Access Control

Door Systems



Security

Oracle Certifications

- PeopleSoft Partner since April, 2003
- Certified on PeopleSoft versions 8.3, 8.8, 8.9, 9.0
- PeopleTools versions 8.46, 8.47, 8.48, 8.49
- Certified on Oracle EBS versions 11.5.5 and 12
- Future release certifications guaranteed

What do we do?

- Technologies and Services for automating:
 - Time and Attendance
 - Labor Data Collection
 - Demand Scheduling
 - Analytics
 - Employee Self Service
 - Regulatory Compliance
- Systems that allow clients worldwide to efficiently collect, validate, and process workforce time and labor information

Why Companies Choose Kaba...

- Stable and Diversified
- Focus on Time & Labor Market
- Premium Offering
- Implementation Methodology
- Oracle Certified

Focus on Time and Labor Market

- Kaba offers...
 - Ruggedized data collection terminals
 - B-COMM® for PeopleSoft T&L
 - B-COMM® for Oracle T&L
 - AutoTime – Time and Labor evaluation software
- Kaba also offers: Project management, implementation, integration, quality assurance & end-user training

Best of Breed “Premium” Product Offering

- Kaba systems...
 - Validate data at the point of entry
 - Allow for data collection even if the network is down
 - Terminals continue to function even if power goes out
 - Allow for systems deployment and data collection in harsh environments
 - Allow an organization to use common badge credentials throughout the enterprise
 - Eliminate “buddy punching” through use of biometrics
 - Are multi-lingual
 - Offer a mobile strategy with telephone and wireless data collection
 - Enable employee self-service

Implementation and Deployment Methodology

- Consistent and proven system ensures success...
 - Customer specific Project Plan
 - Site Survey
 - Business and interface requirement gathering
 - Configuration of the solution and integration points
 - System Administration and configuration training
 - Testing – integration, user acceptance, parallel
 - Monitored cutover and go-live
- Implementation goal is completion of project within customer's timeframe and budget while meeting business needs and expectations.

B-COMM[®] Dataflow

- XML Integration and Messaging
- Setup data is downloaded into the B-COMM database for validation



- Transaction data is collected real time through a PC or terminal
- Employees enter punch or elapsed time transactions

- Collected data uploaded to PeopleSoft or OTL for evaluation is collected real time through a PC or terminal

The Flow of Data

Downloaded to B-COMM: Required for Real-time Validation

- Time Reporter
- Schedule
- Restriction Profile
- Time Reporting Code
- Total Hours
- Task Profile
- Supervisory
- Task Templates
- Task Element Values
- Reporting Element Tables

TCD Type Definition

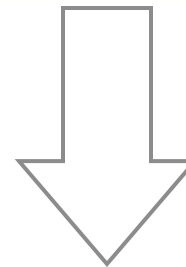
TCD Type: KUXML1

Time Collection Device Type Definition Find | View All | First 1 of 1 Last

*Effective Date: 01/01/1980 *Status: Active

*Description: XML, Prfls, TRCs, Sched 7, RE1 Short Description: XML, Prfls

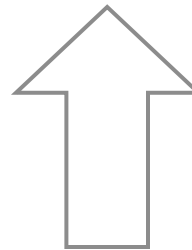
TCD Function Integration			
Task Elements	Rule Elements	Reporting Elements	Integration Type
<input checked="" type="checkbox"/> Send Task Profiles	<input type="checkbox"/> Send Rule Element 1	<input type="checkbox"/> Send Country	<input checked="" type="radio"/> XML Integration
<input type="checkbox"/> Send Task Template	<input type="checkbox"/> Send Rule Element 2	<input type="checkbox"/> Send State	<input type="radio"/> Flat File Integration
<input type="checkbox"/> Send Task Values	<input type="checkbox"/> Send Rule Element 3	<input type="checkbox"/> Send Locality	
<input type="checkbox"/> Send Hours	<input type="checkbox"/> Send Rule Element 4	<input type="checkbox"/> Send Rate Code	
<input type="checkbox"/> Send TRCs	<input type="checkbox"/> Send Rule Element 5	<input type="checkbox"/> Send Currency Code	
<input checked="" type="checkbox"/> Send Schedules		<input type="checkbox"/> Send Override Reason Code	
Schedule Days: 7			



The Flow of Data

Uploaded to PeopleSoft for the benefit of time evaluation

- Punched Time
- Punched Task
- Elapsed Time
- Punched Task



PeopleSoft.

Home | Worklist | Add to Favorites | Sign out

[New Window](#) | [Help](#)

Overview | Message Instances | Pub Contracts | Sub Contracts | Channel Status | Node Status | Queries

Message Criteria

Publish Node: Last: Days Archived

*Queue Type: *Group By:

Queues [Customize](#) | [Find](#) | [View All](#) | [First](#) | [1-2 of 2](#) | [Last](#)

Channel Name	Error	New	Started	Working	Done	Retry	Timeout	Edited	Canceled
ELAPSED_TIME	0	0	0	0	1	0	0	0	0
PUNCHED_TIME	0	0	0	0	1	0	0	0	0

Menu

Search:

- ▶ My Favorites
- ▶ Manager Self Service
- ▶ Workforce Administration
- ▶ Time and Labor
- ▶ Set Up HRMS
- ▶ Worklist
- ▶ Tree Manager
- ▶ Reporting Tools
- ▶ PeopleTools
- ▶ Utilities
- ▶ Process Scheduler
- ▶ Integration Broker
- ▼ Monitor
 - ▶ Monitor Message
 - ▶ Message Details
- ▶ MultiChannel Framework

The Flow of Data

Oracle Time & Labor

Download

- Personnel Information
- Payroll Elements
- Department
- Cost Center
- Supervisors
- Projects
- Tasks
- Expenditure Types

Upload

- Start/Stop Time (ranges)
- Duration (measure)

B-COMM: A User's Perspective



**Employees:
Record Time, Attendance,
and Labor on Kaba Time
Collection Devices**



**B-
C-
O-
M-
M**

Timesheet

Robert Keyes EmpID: KOMTK001
Job Title: Clerk-I Employee Record Number: 0

View By: Week Date: 02/18/2008 << Previous Week Next Week >>
<< Previous Employee Next Employee >>

Reported Hours: 8.31 Hours Scheduled Hours: 40.00 Hours [Show all Punch Types](#)

From 02/18/2008 to 02/24/2008

Day	Date	Status	In	Break	In	Lunch	In	Out	Punch Total
Mon	2/18	New							
Tue	2/19	New							
Wed	2/20	New							
Thu	2/21	New							
Fri	2/22	Submitted	7:50:11AM			12:03:07PM	12:55:55PM	5:01:25PM	8.31
Sat	2/23	New							
Sun	2/24	New							

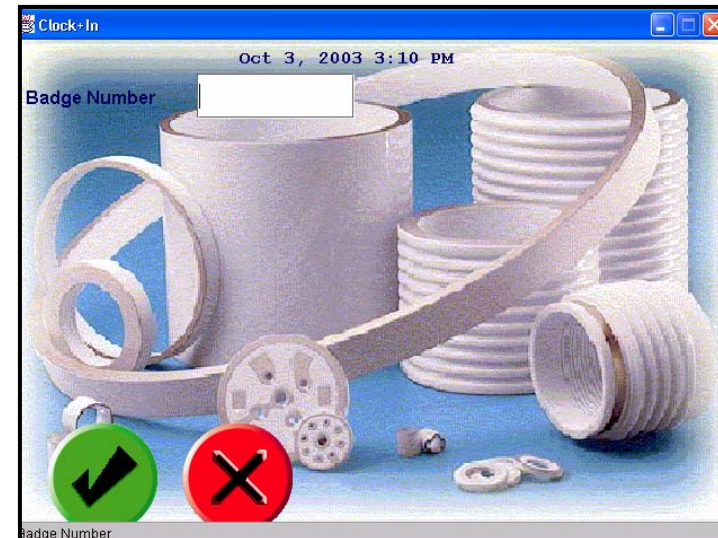
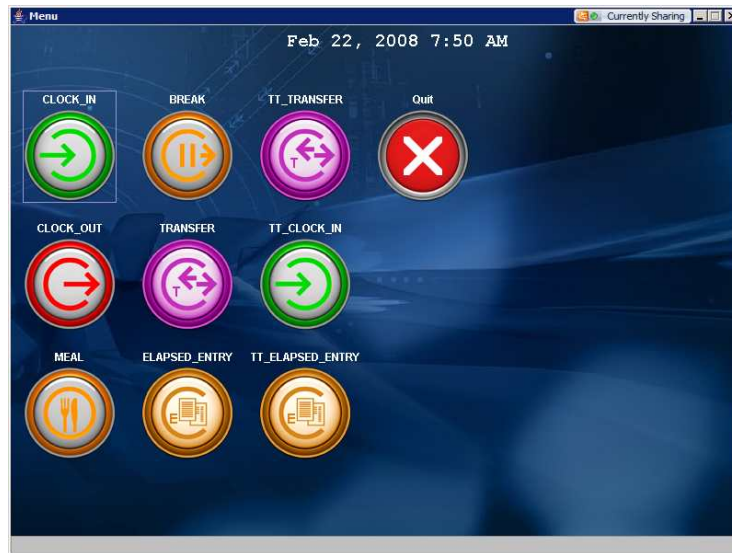
Save for Later Submit Clear Apply Rules

**Supervisors:
Review, Edit, and
Approve time in PeopleSoft**



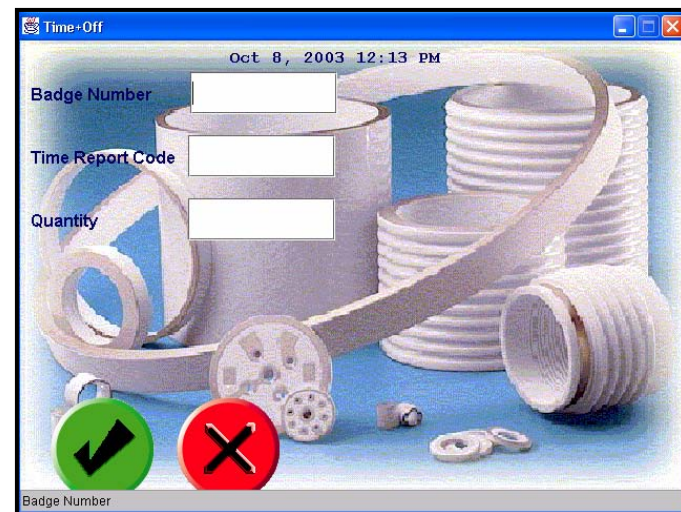
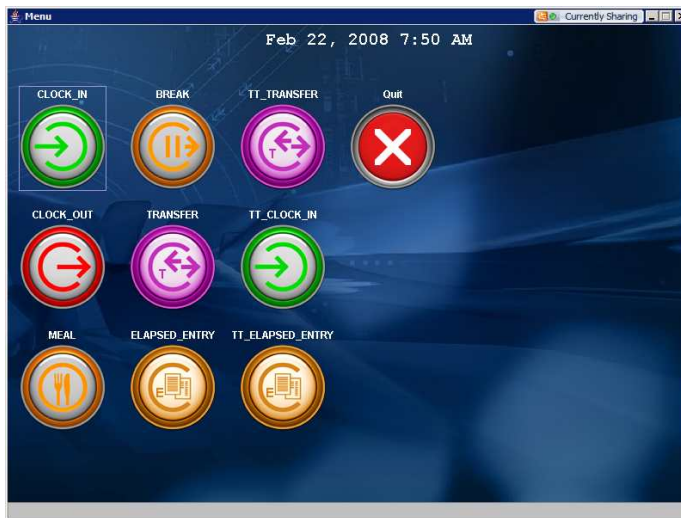
B-COMM: Punch Time & Task

- Punch Event
 - Who, What, When, Where
 - Clock in, Clock out, Start Break, Start Meal, Transfer



B-COMM: Elapsed Time & Task

- Elapsed Time
 - Direct entry of time charged to a time reporting code (vacation, sick, jury duty, holiday, miles driven, etc.)



KABA Data Collection Options



B-Net 9520



B-Net 9540



B-Net 9580



Motorola MC70



IVR



PC

Time and Attendance > Labor Collection > Employee Self Service

Questions?



Contact

- **Jesse Gunder**
- Director of Corporate Development
- Kaba Workforce Solutions
- E-mail: *jgunder@kbm.kaba.com*