

# Creating a Development Environment, Worthy of Withstanding Stringent Controls and Audits

*Rose Taylor and Kimberly Lewis  
Raytheon Company*

# What We Will Cover

Our process for:

- Project tracking
- Production change control
- Customer sign off
- Configuration management
- Audit controls

## Who We Are

- Raytheon is an industry leader in defense and government, electronics, space, information technology, technical services, and special mission aircraft.
- PeopleSoft
  - Application Version 8.80
  - PeopleTools 8.47.08
  - Oracle 10.2.0.3 (10g)
  - Unix Sun Solaris
  - STAT Version 5.2.1

## PS/HCM at Raytheon

- Centralized US Payroll that pays:
  - More than 60,000 Employees Bi-Weekly
  - More than 2,000 Employees Weekly
- 15 Payroll Subsets (groups) with largest subset paying 14,000 Employees
- 49 total company codes
  - 10 international companies
  - 39 domestic companies

## PS/HCM at Raytheon

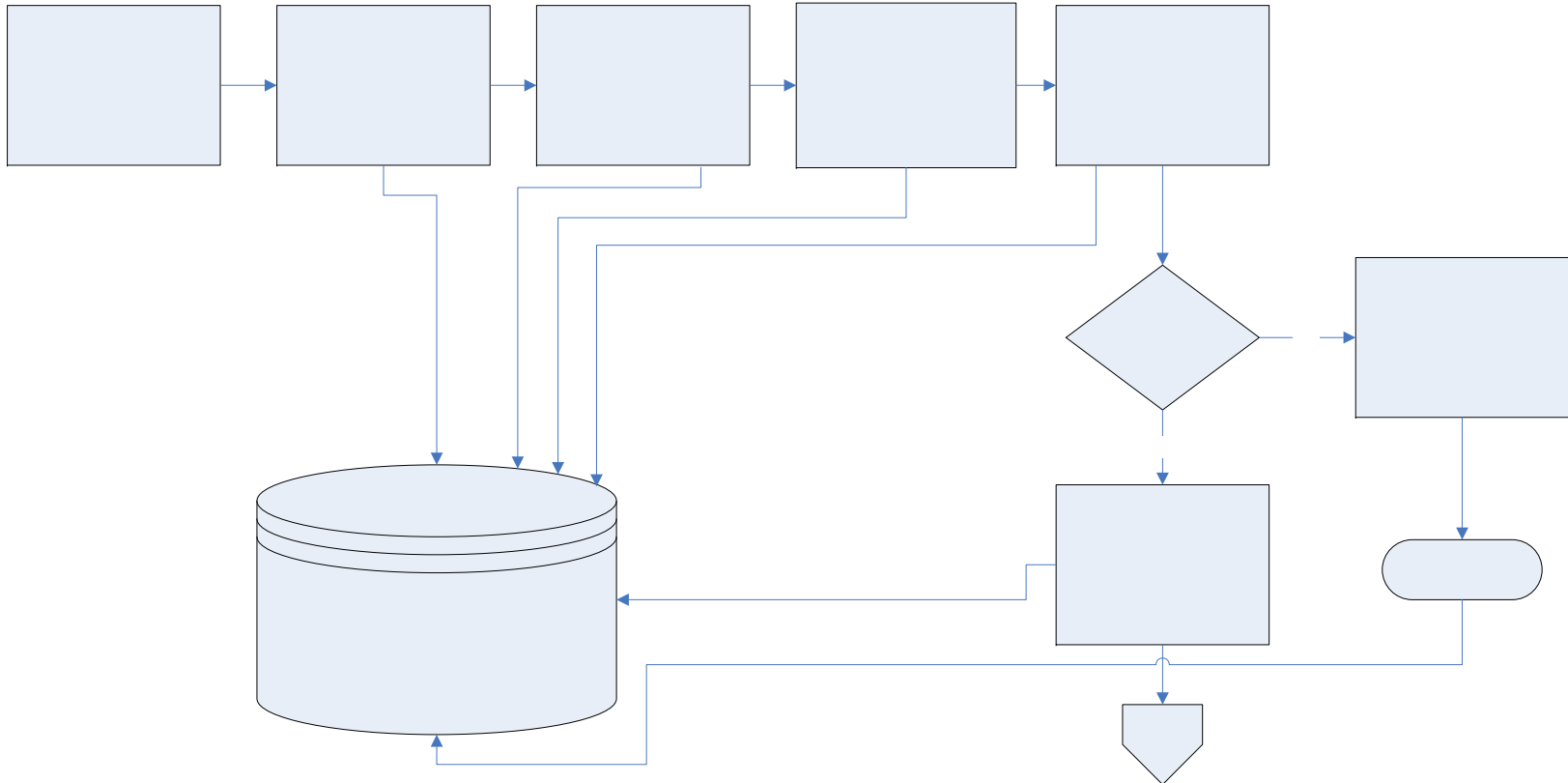
- International sites use PeopleSoft for HR
- Employee Self Service for:
  - On-Line Paycheck View
  - PTO
  - Direct Deposit
  - State and Federal W-4
  - Emergency Contacts
  - Education
  - Employee Fact Sheet

# Tools of the Trade

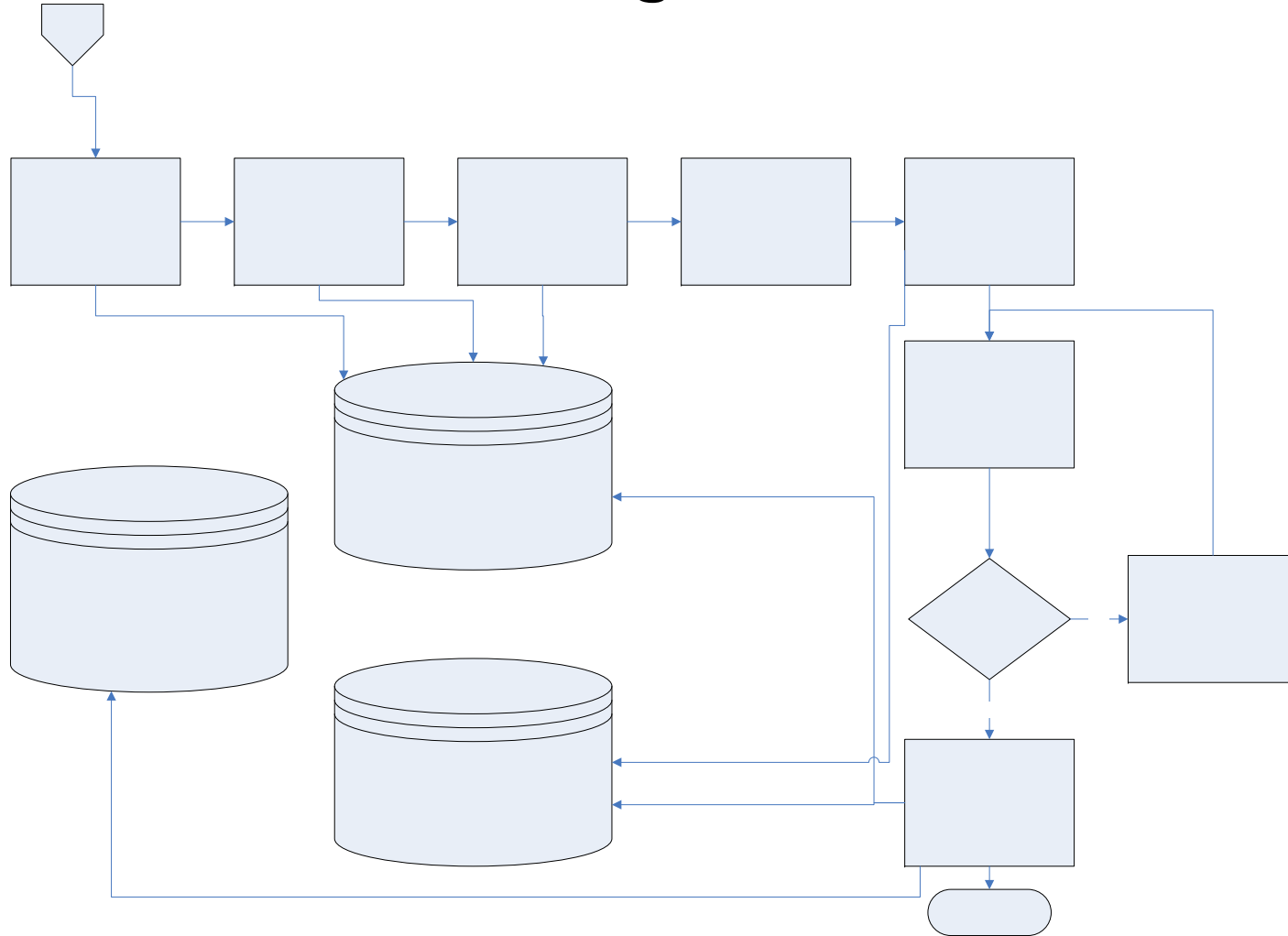
We use 3 main tools for our process life cycle:

- Change Request Database
- STAT Migration Tool
- Production Change Notice (PCN)

# Change Request Flow



# Stat/Production Change Notification Flow





# Process Life Cycle

- Client Request is sent and received by IT
- Request is documented in Change Request Database
  - A unique Project Number is assigned to this request
  - An automated email notification is sent to management to alert that a new project was added
  - Request is assigned to developer for estimate
- Developer estimates effort and updates Change Request Database
  - Status is updated to Ready for Review
  - An automatic email notification is sent to management with updated status

# Process Life Cycle

- Management takes the estimated request to the Change Control Board (CCB) for client approval and prioritization
- Management assigns approved request to a developer
- Developer creates STAT entry
  - A unique STAT Number is assigned to this request
  - Project Number is included
- Developer completes Unit Testing and requests migration to User Acceptance Test (UAT) environment
- Configuration Manager performs migration to UAT environment; developer does not have access to migrate to the UAT environment

# Process Life Cycle

- Customer approves testing in the UAT environment
- Developer creates Production Change Notice (PCN)
  - Project Number and Stat Number are included
  - Automatic email notification is sent for Peer Review, Quality Assurance Review, On-Call Notification, Customer Approval, and Management Approval
- Developer updates status to Install on the Change Request Database
- An automatic email notification is sent to management with updated status
- Developer requests migration to production via STAT

# Process Life Cycle

- Configuration Manager
  - Receives email notification only after Peer Review, Quality Assurance Review, On-Call Notification, Customer Approval, and Management Approval are complete
  - Migrates request to Production using STAT
  - Updates status to Complete on the Change Request Database

# Project Tracking via Change Request Database

On-Line PeopleTools customization tracks:

- Customer requests
- Cost estimates/Funding Approval
- Resource planning
- Functional and technical requirements
- Project Status
- Testing and Test Results
- Automated email of project status to developers and management

# Change Request Database Edits

- IT Resource
- Customer Name
- Charge Number
- CRL (Customer Relationship Lead)
- Project Status
- Work Type
- Project Priority
- IT Lead
- Application Name
- Functional Spec

# Change Request Database Reference Tables

- Customer name
- Status
- Application name
- Work type
- Charge Number
- IT Resource

# Additional Change Request Database Functionality

- Audit trail is available for:
  - Last updated information
  - Before and after values
  - Time and date stamp
- Automatic Late Notification Reporting is produced weekly to notify developers of past due dates
- PS Query is used to produce reports such as:
  - Weekly Customer Relationship Lead Reporting
  - Weekly Resource Reporting
  - Monthly Change Control Board Reporting
  - Audit Reporting on demand



# Change Request DB Page

**Project Tracking List**

<b>Project Number</b>	4400	<b>Entered By</b>	
<b>Project Description</b>	enhancement - SPEC for Tracking Australian Base Pay		
<b>Received Date</b>	01/02/2008	<b>Application Name</b>	PeopleSoft
<b>Work Type</b>	5 - Enhancement	<b>Customer Name</b>	Smith, Jane
<b>Priority</b>	Priority 4	<b>CRL</b>	Jones, Jerry
<b>Approval Date</b>	01/03/2008	<b>Project/IT Lead</b>	Lewis, Rachel
<b>Rank</b>	4 - N/A	<b>Project Status</b>	Ready to Test
<b>Charge No</b>	3514640	Tracking Australian Base pay	
<b>Project Total Estimated Hours</b> 16.00			
<b>Production Change Request</b>	<input type="checkbox"/>	<b>Migration Type</b>	Normal
		<b>Release Date</b>	02/13/2008
		<b>Package ID</b>	HR-726
		<b>Release ID</b>	08-02

**Functional Specifications**

Jane Smith  
01/02/2008 01:02 PM  
Please note that this request is pending financial approval. I had sent it out without getting the approval.

Jane Smith  
01/02/2008 08:06 AM  
The following request is to provide capability for reporting and analysis on 'base pay' for all Raytheon employees globally. Currently we port over the Compensation components of nav for all domestic.

**Test Plan & Results**

Created test files out of HRWORK and sent to the DataWarehouse for review.

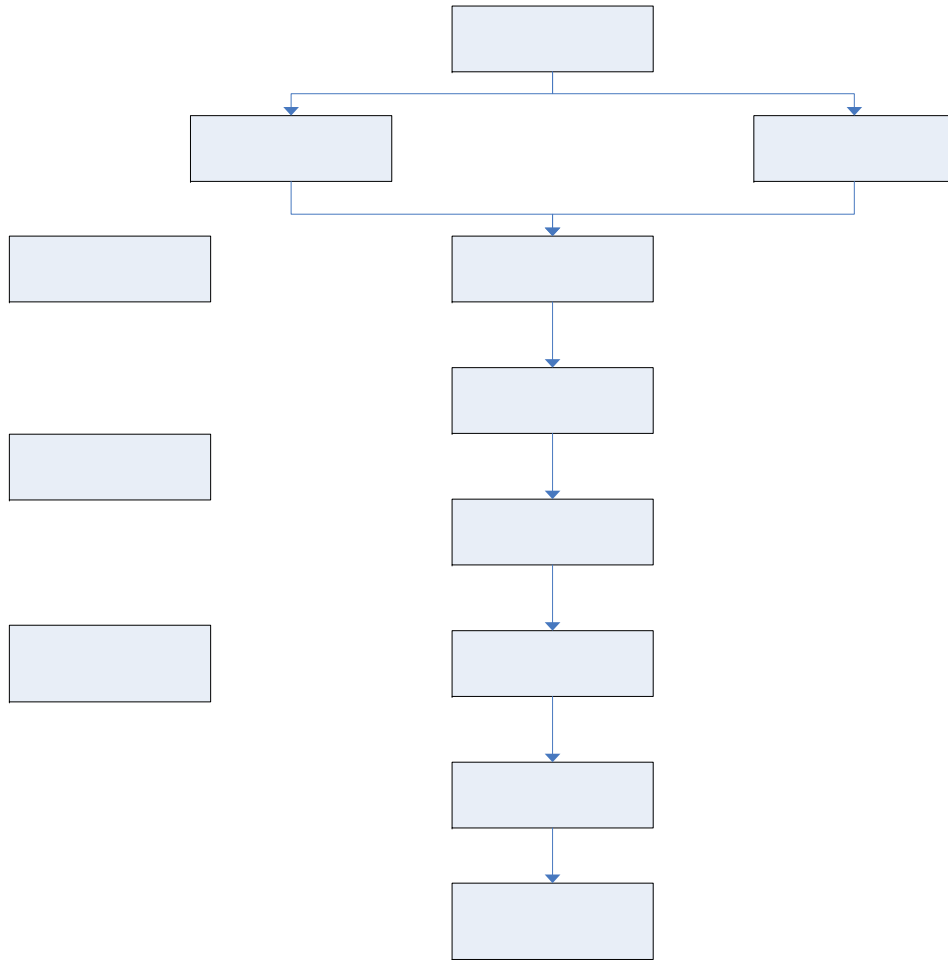
# Change Request DB Page

Process Improvement?

Benefits of the Process Improvement

IT Resource Tracking		Find		First	1 of 1	Last
Sequence number	1					
Estimated Hours	<input type="text" value="16.00"/>					
Actual Hours	<input type="text"/>	*IT Resource	<input type="text"/>			
Hours to Complete	<input type="text" value="16.00"/>	Task Status	<input type="text" value="Ready to Test"/>			
IT Description/Comments						
<p>1/2/08 - QDS - DW will no longer need the pay_comp file that is produced as part of the TASOUT. They want a dump of the PS_COMPENSATION table using the same type of logic that is used when we dump the PS_JOB and PS_JOB_JR tables. Write a SQL similar to DW_PS_JOB.sql or DW_PS_JOB_JR.sql. They will also require a one type dump of the PS_COMPENSATION table that contains all records.</p>						

[Run a Query](#)



## New Project

# Production Change Notification (PCN) Overview

Customized Lotus Notes workflow application sends email approval requests to:

- Peer Reviewer
- Quality Assurance Reviewer
- Customer
- On-Call Support
- Management
- Configuration Manager

## PCN Roles

- Developer initiates the PCN
- Peer Reviewer verifies documentation and modifications
- Customer approves migration to production based off completion of acceptance testing
- Quality Assurance Reviewer verifies test plans and test results are documented in the Change Control Database
- On-Call Support is notified of migration to production
- Management approves migration to production
- Configuration Manager migrates request to production after verifying that all approvals are complete
- Developer verifies changes were successfully migrated to Production

## Overdue PCN's

- Emergency migrations can occur when verbal client approval is given, but formal completion of PCN must occur within 2 business days
- Email reminders are sent automatically to ensure the PCN is complete within the accepted time frame
- If PCN's are not complete within 2 business days, they are reported as an exception in the audit process

# Production Change Notification

## Production Change Notice (PCN) Installation Routing Form

Application Name: PeopleSoft  
 Change Request Number: 4400  
 Change Request Description: Tracking Australia Pay - Send Compensation data to the DW

Type:  Batch     On Line     Scheduling     Data Patch     Other

Requested Implementation Date: 02/13/2008  
 External or International Access:  Yes  No  
 Normal Implementation:  Yes  No

PeopleSoft STAT CSR#: HR-726

	Date	Comments
Reviewed and tested changes	01/31/2008	
<input checked="" type="checkbox"/> Peer Review - Reviews documentation and software changes.	01/31/2008	
<input checked="" type="checkbox"/> QA - Reviews changes and testing results.	01/31/2008	
<input checked="" type="checkbox"/> Customer - Verifies that Acceptance Testing has been completed.	02/08/2008	
<a href="#">hr_support</a> <input checked="" type="checkbox"/> On-Call Support - Acknowledges Changes	01/31/2008	
<input checked="" type="checkbox"/> IT Management - Acknowledges Changes	02/01/2008	
<input checked="" type="checkbox"/> Configuration Manager - Moves Changes to Production	02/13/2008	20080213 - btw - migrated final from hr qa to hrmspro, batch sql customized text.
<input checked="" type="checkbox"/> Originator - Verifies change in Production	02/13/2008	
<input checked="" type="checkbox"/> Configuration Manager - Change Request completed and notifications sent	02/13/2008	pen complete

Comments/Instructions:

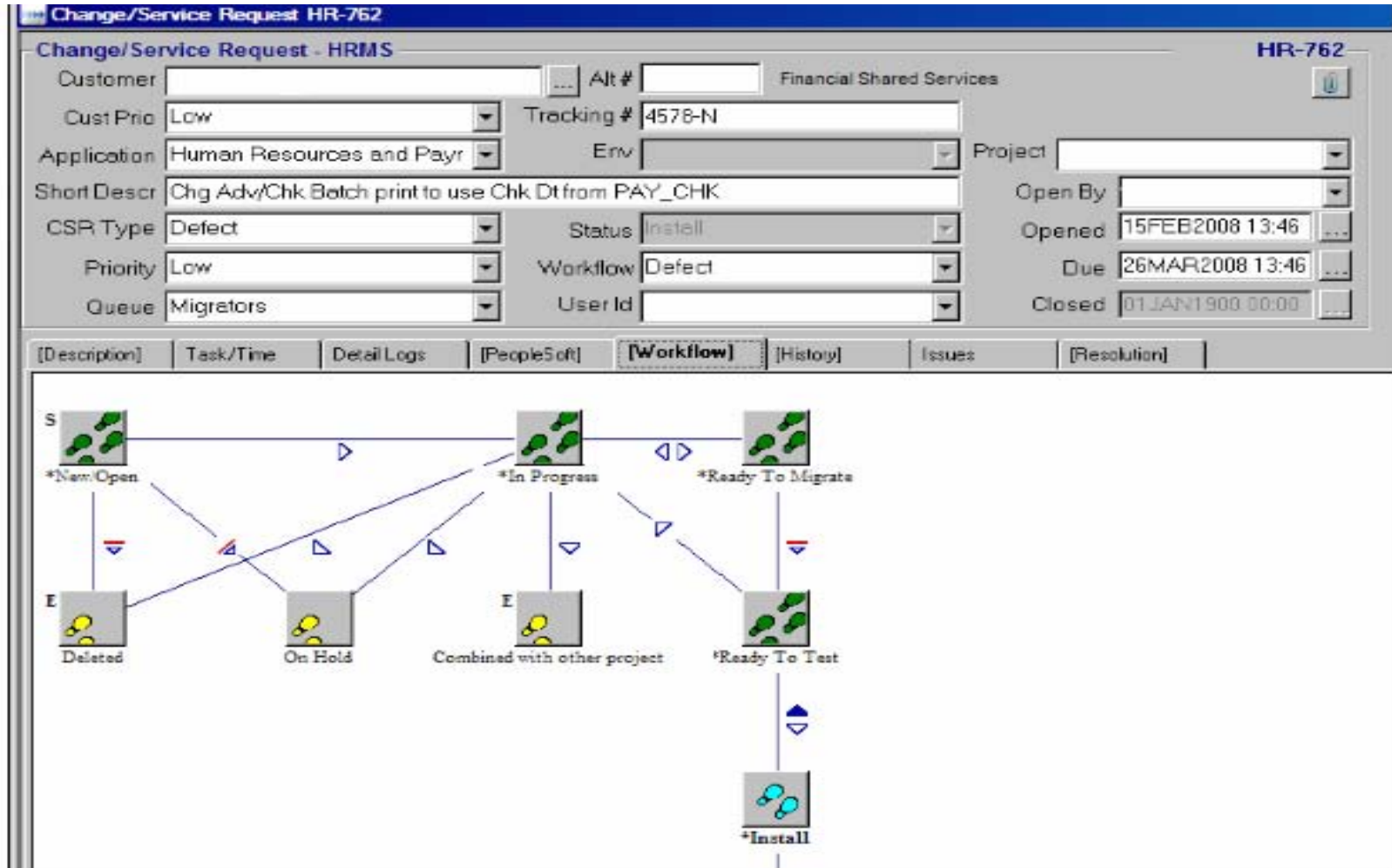
# Migration Tool via STAT

STAT is used to migrate batch and on-line requests to UAT and production

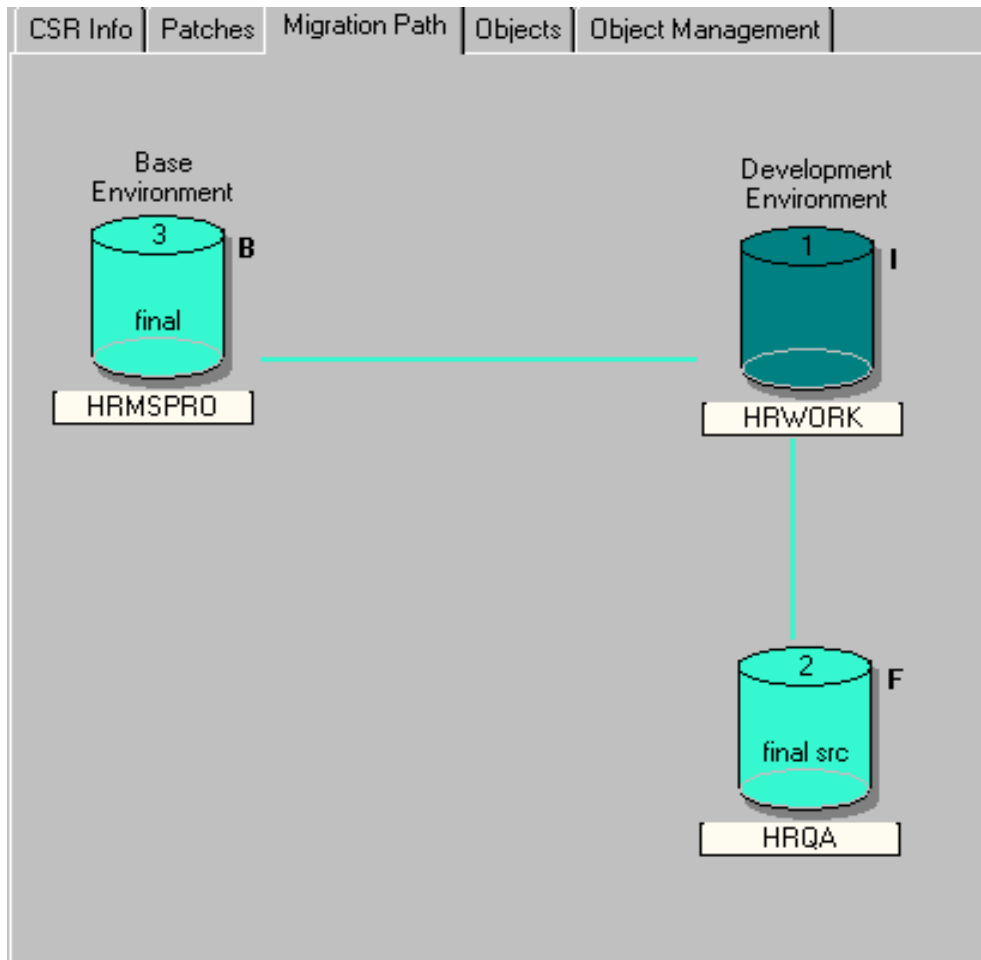
- Migration path is defined in STAT
- Configuration Manager role is defined in STAT and is required to migrate to UAT and Production environments
- Version Control is maintained by STAT



# STAT Workflow



# STAT Migration Path



# Audit

- PeopleSoft HCM is in scope for the Sarbanes Oxley Act – Section 404 due to potential for affecting the financial bottom line
- IT has specific audit control activities that must be followed
- A combination of the Change Request Database, Production Change Notification, and STAT Migration Tool allows us to meet the IT requirements and pass the Sarbanes Oxley audits

# Questions?