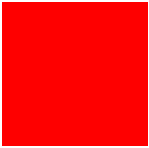
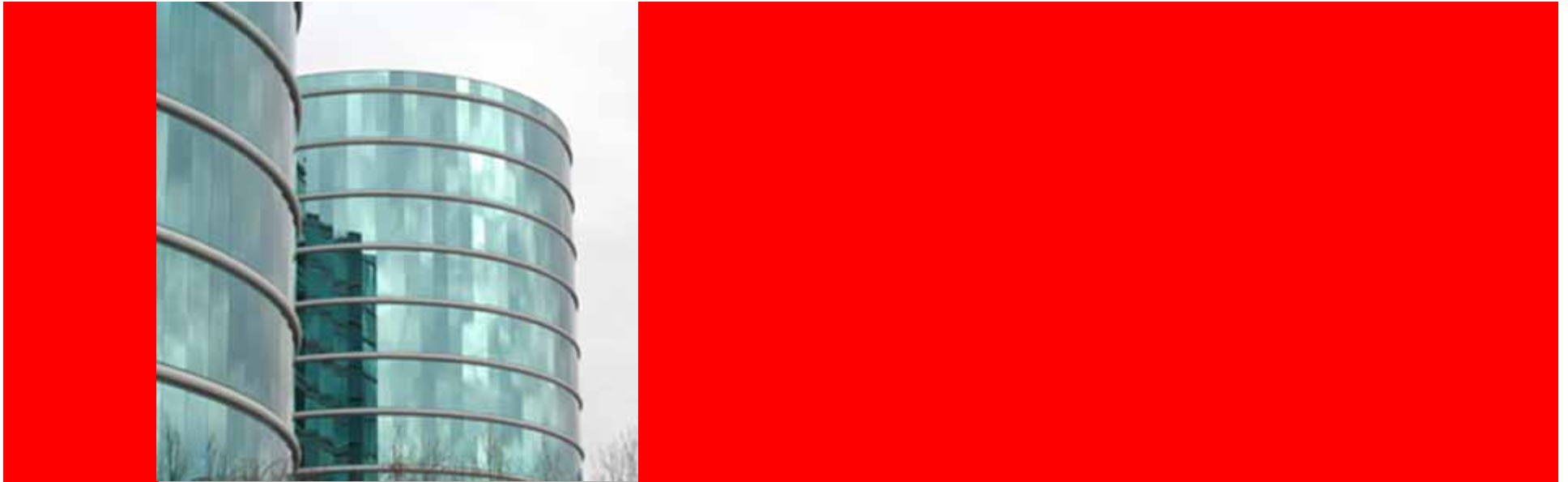


**ORACLE®**



The following is intended to outline our general product direction. It is intended for information purposes only, and may not be incorporated into any contract. It is not a commitment to deliver any material, code, or functionality, and should not be relied upon in making purchasing decisions. The development, release, and timing of any features or functionality described for Oracle's products remains at the sole discretion of Oracle.



**ORACLE®**

## **Service-enable PeopleSoft with Oracle SOA Suite BPEL Process Manager**

**Ronaldo Viscuso - Principal Technologist, PTS.**

**Nishit Rao - Group Product Manager, FMW**

# Agenda

- FMW Overview
- FMW and Peoplesoft Certification Roadmap
- FMW and Peoplesoft Demo
- Hands on Lab
- Integrating Peoplesoft using Oracle SOA Suite / BPEL
- Q & A





# FMW Overview



# ORACLE FUSION MIDDLEWARE



## Development Tools

Unified SOA Development Tool & Framework



## User Interaction

Web 2.0 Portal, Rich Internet Apps, Mobile, Search, Desktop, Presence, VoIP



## Enterprise Performance Management

Planning, Budgeting, Financial Management & Reporting, Scorecards



## Business Intelligence

Data Integration, Query & Analysis, OLAP, Dashboards, Reports, Alerts, Real-Time



## Content Management

Web Content, Documents, Digital Assets, Imaging, Records, Information Rights



## SOA & Process Management

ESB, BPEL PM, Workflow, BAM, Rules, B2B, MDM, Registry, SOA Governance



## Application Server

Java EE, Web Services, Complex Event Processing, XTP, RFID & Sensors, SIP



## Grid Infrastructure

Application Clusters, In-Memory Data Grid, Common Metadata Services



## Enterprise Management

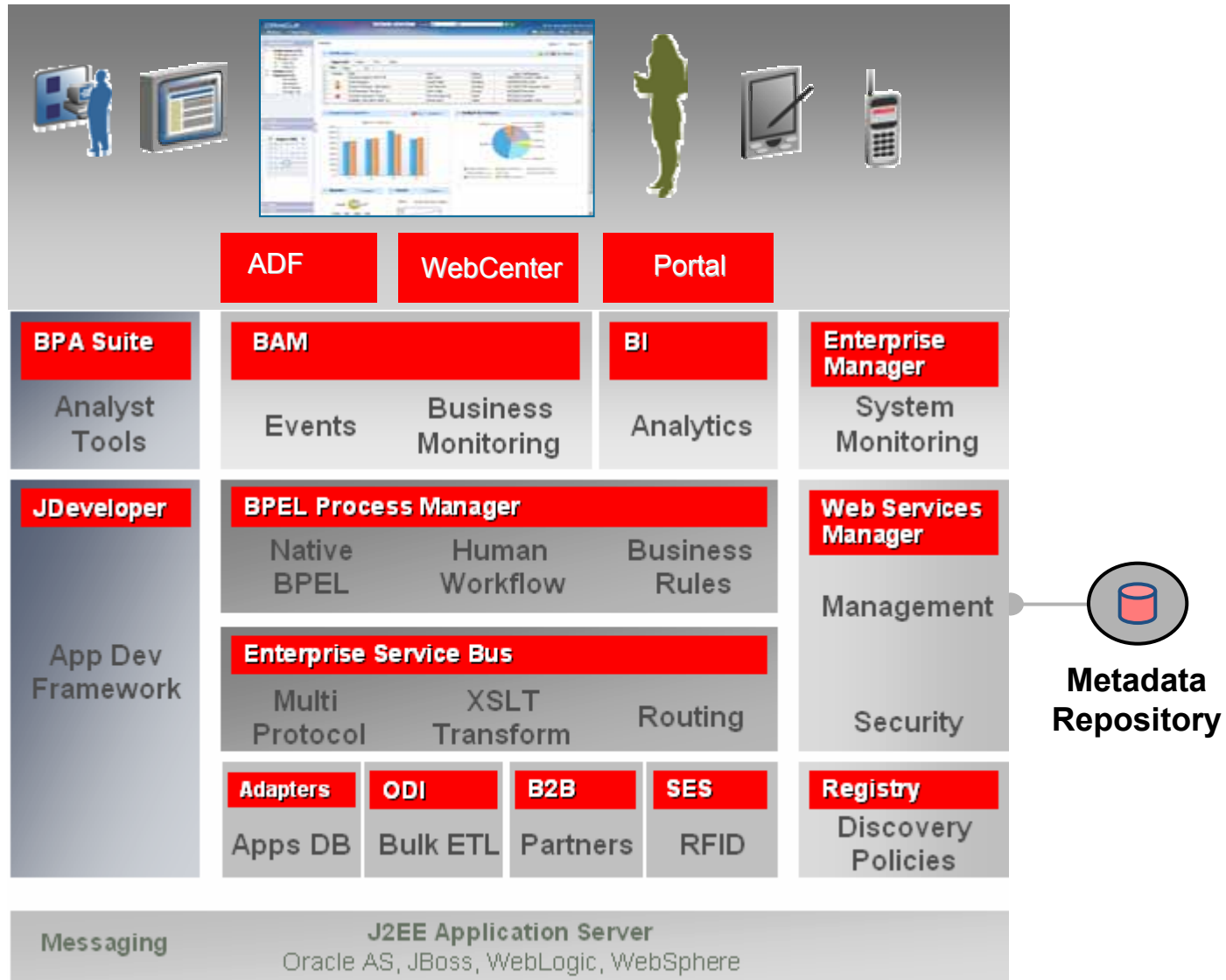
Provisioning, Diagnostics, Tuning, Configuration Management



## Identity Management

Provisioning, Access Management, Federation, Audit, Directory

# Oracle SOA Technologies





# Oracle Fusion Middleware

The World's Best Middleware Suite - Gartner MQs

• Application Platform Suites	LEADER
• Development Tools	LEADER
• Application Server	LEADER
• Web Services Platform	LEADER
• Enterprise Portal	LEADER
• Enterprise Content Mgmt.	LEADER
• Enterprise Records Mgmt.	LEADER
• Enterprise Service Bus	LEADER
• Business Integration	LEADER
• Business Process Mgmt.	LEADER
• Business Intelligence	LEADER
• Corporate Performance Mgmt.	LEADER
• Access Management	LEADER
• Identity Provisioning	LEADER
• Web Services Management	LEADER
• Data Integration	LEADER





# Oracle Fusion Middleware

The World's Best Middleware Suite

- 34,000+** Global Customers
- 873** Business Week 1000
- 39** Fortune 50 Global
- 43** Fortune 50 US
- 7,800** Partners
- 4,780** ISVs
- 38,500** SIs
- 4,500** VARs
- 227** Patents
- 145** Industry Awards

# Oracle Fusion Middleware

Used by the World's Leading Companies



ORACLE®



# Certifications and FMW Uptake



# SOA with Applications Unlimited

Out-of-the-box Web Services

	Oracle	PeopleSoft	Siebel	JD Edwards
<b>Enterprise Business Services (out of box)</b>	More than 150	More than 200	More than 100	More than 100
<b>Enterprise Service Operations</b>	More than 1000	More than 2000	More than 1000	More than 500
<b>Enterprise Business Events</b>	More than 1000	More than 200	More than 1000	More than 300
<b>Modeled Business Process Support</b>	More than 5000	More than 800	More than 1000	More than 300
<b>Services Repository Available</b>	YES	YES	YES	YES

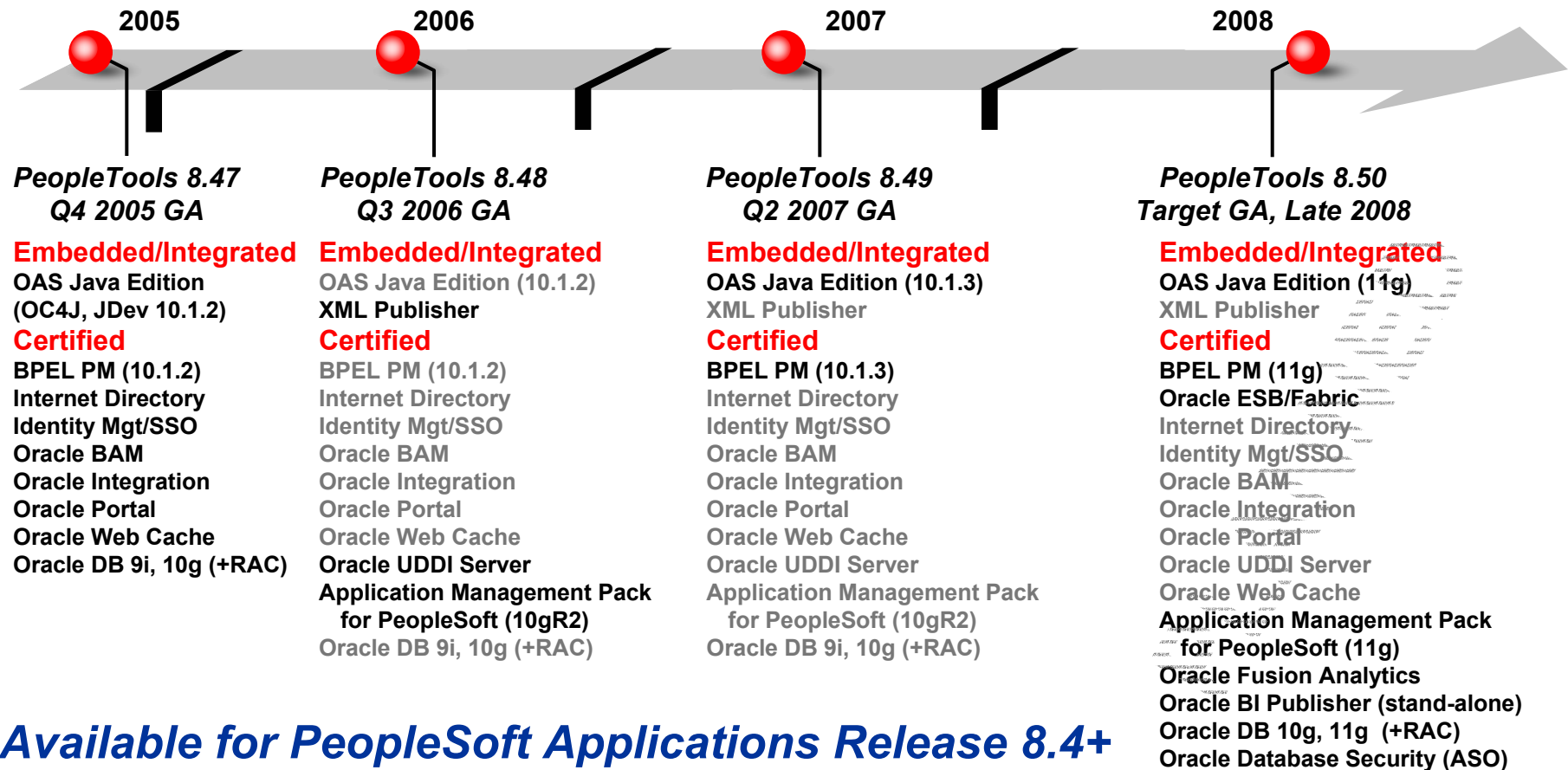


# FMW Certification Roadmap



# PeopleSoft Strategy

## Continued Oracle Fusion Middleware Support



**Available for PeopleSoft Applications Release 8.4+**



# Fusion Middleware Certification

Oracle Fusion Middleware	PT 8.46	PT 8.47	PT 8.48
Oracle Application Server		I	I
Oracle XSLT Mapper (part of JDev)			E
Oracle BPEL Process Manager	C	C	C
Oracle BAM		C	C
Oracle Integration B2B		C	C
Oracle Adapters		C	C
Oracle Portal 10.1.3		C	C
Oracle UDDI Server			C



ORACLE®

\* Post EPM 9.0 Patch

\*Subject to change until delivered

# SOA Suite for Peoplesoft

**BPEL, BAM & ESB**







# Peopletools and BPEL PM Integration

- New PeopleCode APIs to launch and consume BPEL processes
- PeopleCode utility Application Class that monitors and tracks BPEL processes
- Has resulted in
  - BPEL Process Templates in CRM 9
  - BPEL Process Monitoring from PSFT CRM

# Initiating a BPEL Process

- BPEL process can be initiated from within a CRM Transaction
  - BPEL process can be asynchronous or synchronous
  - User can view progress of BPEL process from the initiating transaction (Business Process Monitor)

The screenshot displays the Oracle CRM interface for an Order record. The order ID is COM0500060, and the customer is Softgear Inc. with contact Ted Pepper. The order status is 'Complete Order' with a Platinum customer value and a credit rating of 0. The 'Related Actions' tab is selected, showing a 'Service Order' with ID COM01/SVC0000114. Below this, the 'Business Process Instances' section includes a 'Refresh Instance List' button and a table of 'Related Business Processes'. A blue arrow points from the 'Refresh Instance List' button to the text 'Opens Business Process Monitor'.

Service Operation	Submit Date	Start Date	End Date	Submitted By
Telco New Order BPEL	06/07/2006 12:17PM	06/07/2006 12:18PM	06/07/2006 12:19PM	Briseno,Diane

# BAM Dashboard with PSFT CRM 9

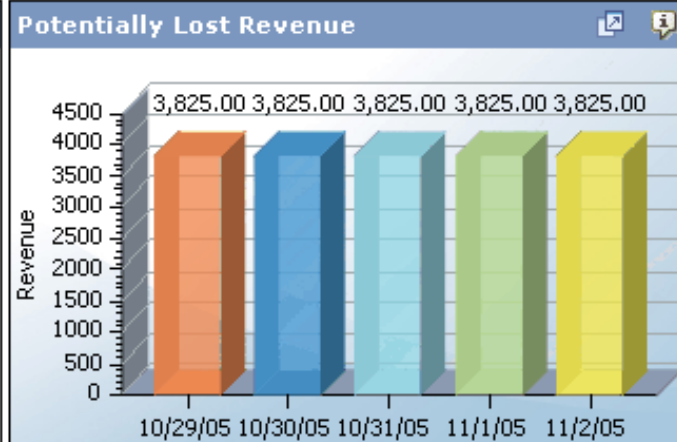


# Sales Order Dashboard

Summary | Other Reports | HR Helpdesk Targets | Sales Summary | Sales Targets | **Order Capture Summary** | Alerts (70)

Business Unit: Appliances | Quarter: 2005 Q4 | Go

Time to Delivery			
Metric	Target	Actual	Attainment
<a href="#">On Time</a>	200	1	0.50%
<a href="#">In Jeopardy</a>	1,000	2	0.20%
<a href="#">Late</a>	75	1	1.33%

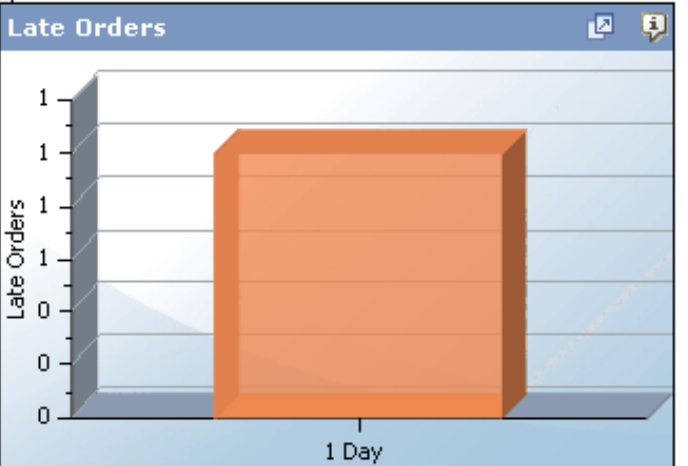


Recognized Revenue (Quarter)			
Metric	Target	Actual	Attainment
<a href="#">Orders Expected to Com</a>	\$600,000.00	\$6,975.00	1.16%
<a href="#">Total Revenue in Proces:</a>	\$60,000.00	\$6,975.00	11.63%

No Data for Total Attained Revenue

Throughput			
Metric	Target	Actual	Attainment
<a href="#">New Orders</a>	60	3	5.00%
<a href="#">In Process Orders</a>	600	1	0.17%

No Data for Completed Orders



My Received Alerts		
TimeStamp	Subject	Del
10/28/2005 5:45:13 PM	100 % of all orders containing Household pro	
10/28/2005 5:45:13 PM	100 % of all orders containing products are p	
10/28/2005 5:45:13 PM		



# WebCenter for Peoplesoft





# Peoplesoft Application UI integration

- Direct URLs with support for SSO
  - Direct Links on the Portal page to PIA
- ADF Data-Control
  - Base ADF components from Web-Service based Data Control
- WSRP Portlets
  - Standards based, Application server agnostic.
  - Pre-Built Portlets
  - Pagelet Wizard
  - Expose Component Interface (CI) as Pagelet
  - Identity Propagation via WS-Security

# PeopleTools 8.48 and WSRP

The screenshot displays the Oracle PeopleTools 8.48 configuration interface. The top navigation bar includes links for Home, Worklist, MultiChannel Console, Add to Favorites, and Sign out. The left sidebar shows a menu structure with 'Structure and Content' selected. The main configuration area includes the following fields:

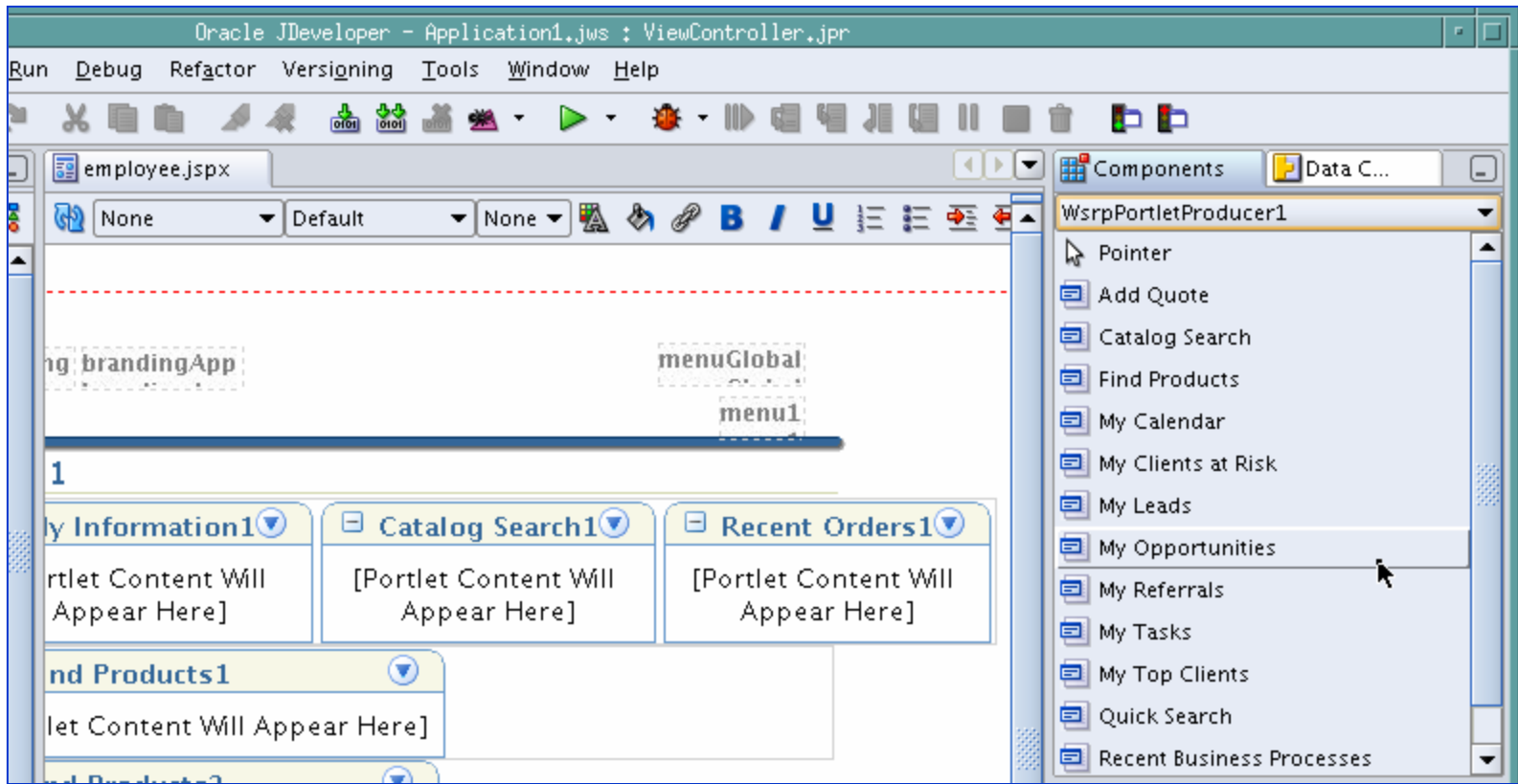
- Product: PT
- Sequence number: 9986
- Object Owner ID: PPT (PeopleTools)
- Usage Type: Target
- Storage Type: Remote by URL
- Template Name: (empty)
- \*Valid from date: 01/01/2000
- Valid to date: 12/31/2010
- Creation Date: 08/10/2001
- WSRP Producing (highlighted with a red circle)
- No Template

Below the main configuration area, there are sections for URL Information and Component Parameters:

- URL Information: \*Node Name: LOCAL\_NODE, URL Type: PeopleSoft Component
- Component Parameters: \*Menu Name: MAINTAIN\_SECURITY, \*Market: GBL, \*Component: USERMAINT\_SELF
- Additional Parameters: (empty)

Expose virtually everything via WSRP

# PSFT Portlets exposed in WebCenter



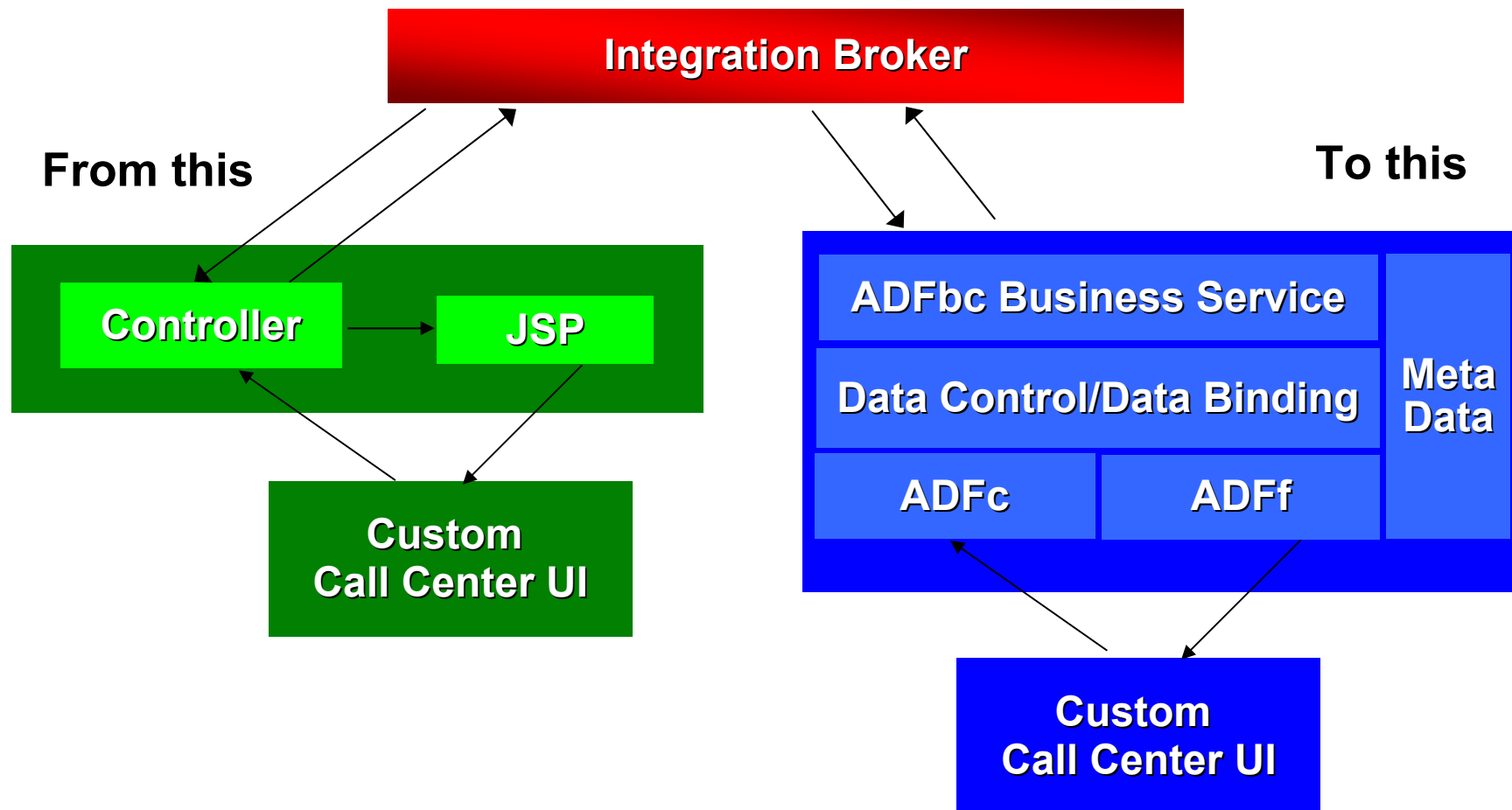
- Portlets Exposed via “PSFT Portal” as Provider.
- Simply Drag & Drop using JDeveloper



# ADF for Peoplesoft



# Customer Technology Extension

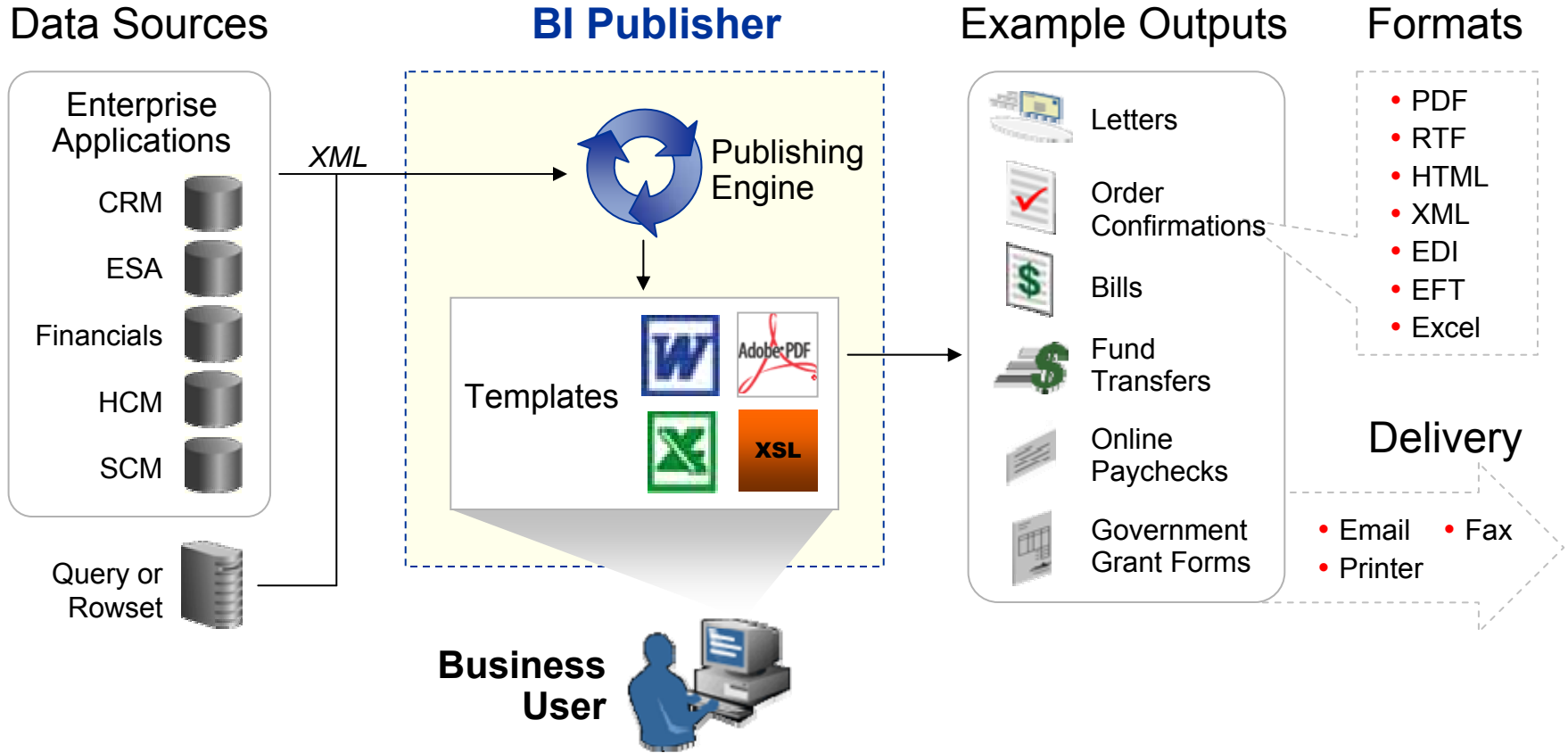


# Reporting with Oracle BI Publisher



# BI Publisher

Enable Business Users to Format and Deliver Documents





# BI Publisher in Oracle Applications

- Oracle E-Business Suite
  - 500 templates in 11i    900 templates in R12
  - Project to convert all remaining Oracle Reports reports
  - Conversion utility from Oracle Reports
- PeopleSoft
  - Integrated into 8.48
  - Products shipping content in R9
    - Financials            • HCM                    • SCM
    - Grants                • CRM                   • Student Admin
- J.D. Edwards
  - Integrated into 8.96
  - Allow customers to develop their own templates
  - Subsequent releases will add Apps content
- More coming ...



# BI Publisher in PeopleTools 8.50

- Improved XML Publisher integration
  - Support Excel templates (in addition to RTF)
  - Multi-query support
  - Stand-alone XMLP system integration
  - Support for e-mail distribution



# End to End FMW Demo



# Service Enabling Peoplesoft – Hands on Lab Overview





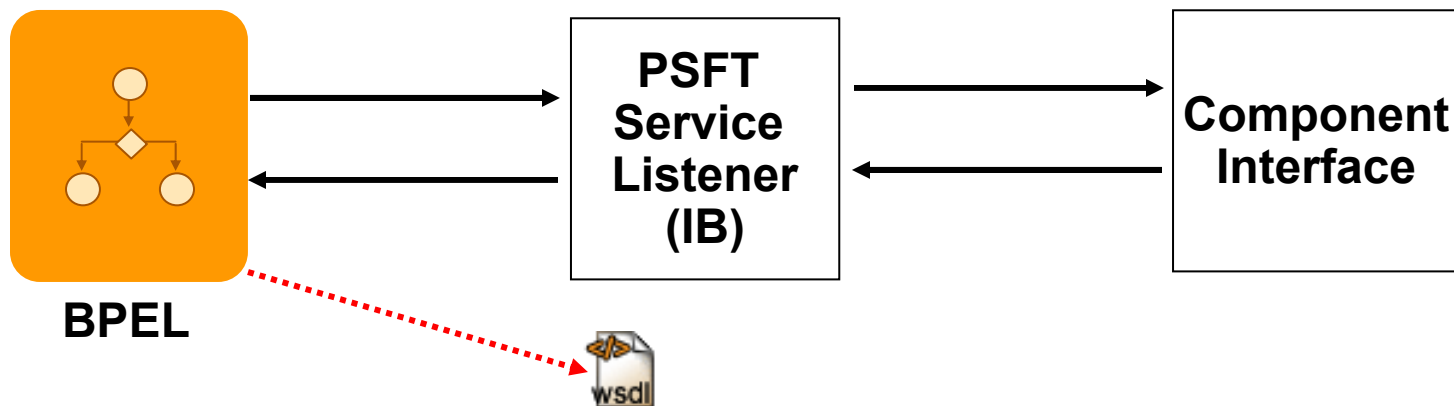


# Bill of Materials

- SOA Suite 10.1.3.3
  - BPEL Process Manager
- JDeveloper 10.1.3.3
- Peoplesoft HCM 8.9 with Peopletools 8.48
  - CI\_PERSONAL\_DATA

# Invoking PeopleSoft CIs from BPEL

- No coding required
  - All business logic/validation performed in the CI
  - Uses CI security
- PeopleSoft-generated WSDLs can be consumed directly by BPEL PM



# Invoking PeopleSoft CIs from BPEL

## PSFT Steps

1. Expose CI as a service
  - Define operations
2. Provide Web Service
  1. Select service
  2. Select operations
  3. Obtain WSDL URL

## FMW Steps

1. Create a PartnerLink in BPEL
  - Use WSDL URL obtained from PeopleSoft
  - Schemas obtained automatically by introspection
2. Use an Invoke activity to access the PartnerLink

# Exposing PeopleSoft Cls as Services

**Menu**

- Workflow
- Portal
- Search Engine
- Personalization
- Process Scheduler
- Cube Manager
- Application Engine
- Query Access Services
- Integration Broker
  - Configuration
  - Integration Setup
  - Service Utilities
- Web Services
  - Provide Web Service
  - Consume Web Service
  - CI-Based Services**
  - Deployment Validation
  - ERP Connectors
  - Admin
  - ERP Connectors
- Service Operations Monitor
- File Utilities
- REN Server Configuration
- Setup Manager
- MultiChannel Framework
- Archive Data
- Data Archive Manager
- Translations
- EDI Manager
- Mass Changes
- Performance Monitor
- Web Profile
- Careers
- Change My Password
- My Personalizations

**Services**

**Service:** CI\_CI\_PERSONAL\_DATA

**\*Description:** CI\_CI\_PERSONAL\_DATA

**Comments:**

**Service Alias:**

**Object Owner ID:**

**\*Namespace:** http://xmlns.oracle.com/Enterprise/HCM/services

[View WSDL](#) [Provide Web Service](#) [Generate SOAP Template](#)

**Service Operations**

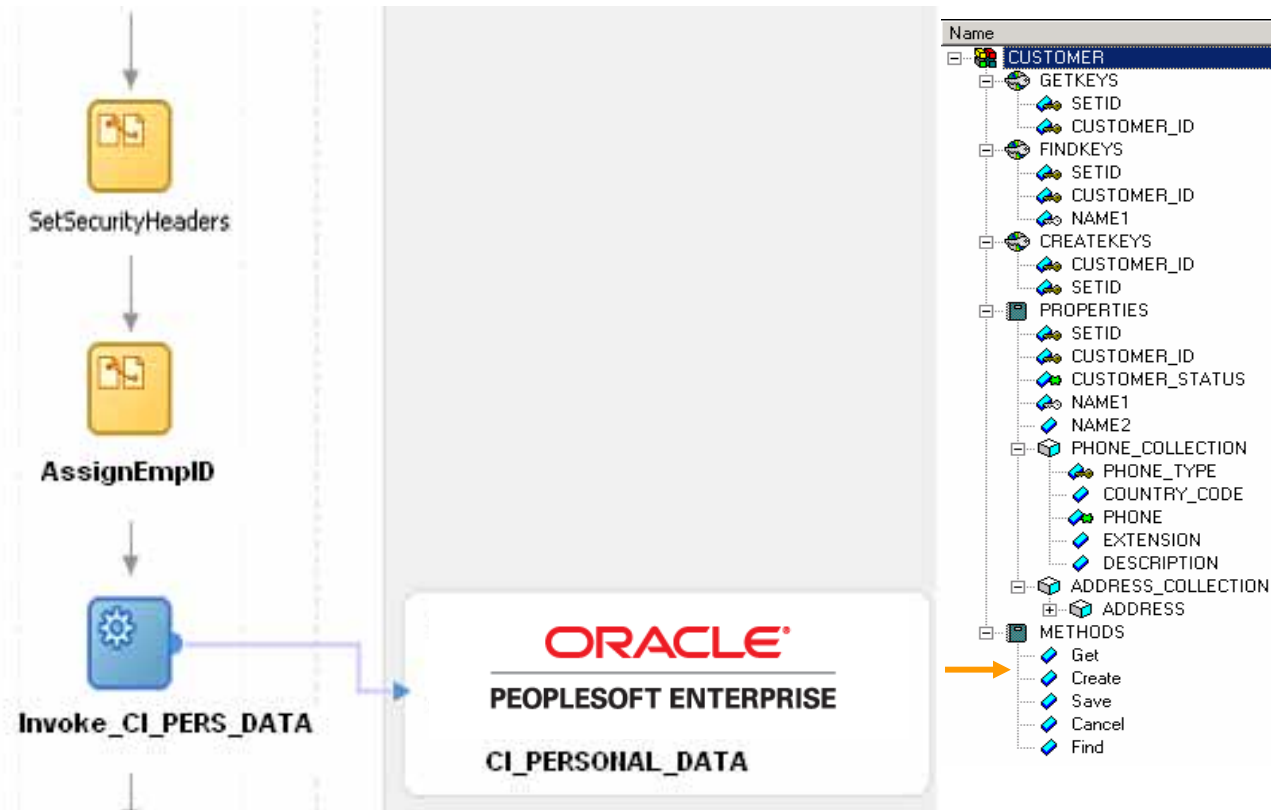
**Service Operation:**

**Operation Type:**

**Existing Operations** [Customize](#) | [Find](#) | [View All](#) | [First](#) | 1-5 of 5 | [Last](#)

Operation	Message Links	Active	Operation Type
<a href="#">CI_CI_PERSONAL_DATA_C.V1</a>		<input type="checkbox"/>	Synch
<a href="#">CI_CI_PERSONAL_DATA_UD.V1</a>		<input type="checkbox"/>	Synch
<a href="#">CI_CI_PERSONAL_DATA_UP.V1</a>		<input type="checkbox"/>	Synch
<a href="#">CI_CI_PERSONAL_DATA_G.V1</a>		<input checked="" type="checkbox"/>	Synch
<a href="#">CI_CI_PERSONAL_DATA_F.V1</a>		<input checked="" type="checkbox"/>	Synch

# Invoking the PeopleSoft web service from BPEL PM





## For More Information

- PeopleSoft Tools and technology
  - [http://www.oracle.com/technology/products/applications/peoplesoft\\_ent/](http://www.oracle.com/technology/products/applications/peoplesoft_ent/)
- Fusion Middleware @ oracle.com
  - <http://www.oracle.com/fusion>
- Fusion Middleware @ OTN
  - <http://www.oracle.com/technology/products/middleware>
- FAQ: Using PeopleSoft Enterprise with Oracle Technology Components
  - [http://www.peoplesoft.com/corp/en/iou/red\\_papers/index.jsp](http://www.peoplesoft.com/corp/en/iou/red_papers/index.jsp)



ORA

**ORACLE®**