

PeopleSoft Enterprise and Oracle Fusion Middleware (FMW)

Adam J. Laine

Innowave Technology

Why switch to the SOA paradigm? Why replace your current 'legacy integrations' with BPEL PM Orchestrations? It's about ROI on your expensive IT investments. It's about saving your recourses time on maintenance, so they are free to work on new initiatives. Partnering your enterprise applications with FMW minimizes your application downtime and risk. This White paper will detail the benefits you will see with the SOA approach. We will see how PeopleTools 8.48 and above can accommodate integrations using BPEL PM.

Who is Innowave technology?

Innowave is a technology consulting firm founded in 2005 headquartered in Irvine California with a satellite office in Los Angeles. Innowave is an Oracle partner and provides unique, innovative solutions using Oracle Applications and Technology. Innowave implements, upgrades, and enhances PeopleSoft, Oracle E-Business Suite, JD Edwards, Demantra, and Siebel Applications. Our particular expertise includes: Fusion Middleware, SOA, BPEL & Web services, BAM, OBIEE, Portal, and Identity Management. We have unique solutions and offerings for Fusion Middleware and PeopleSoft Enterprise.

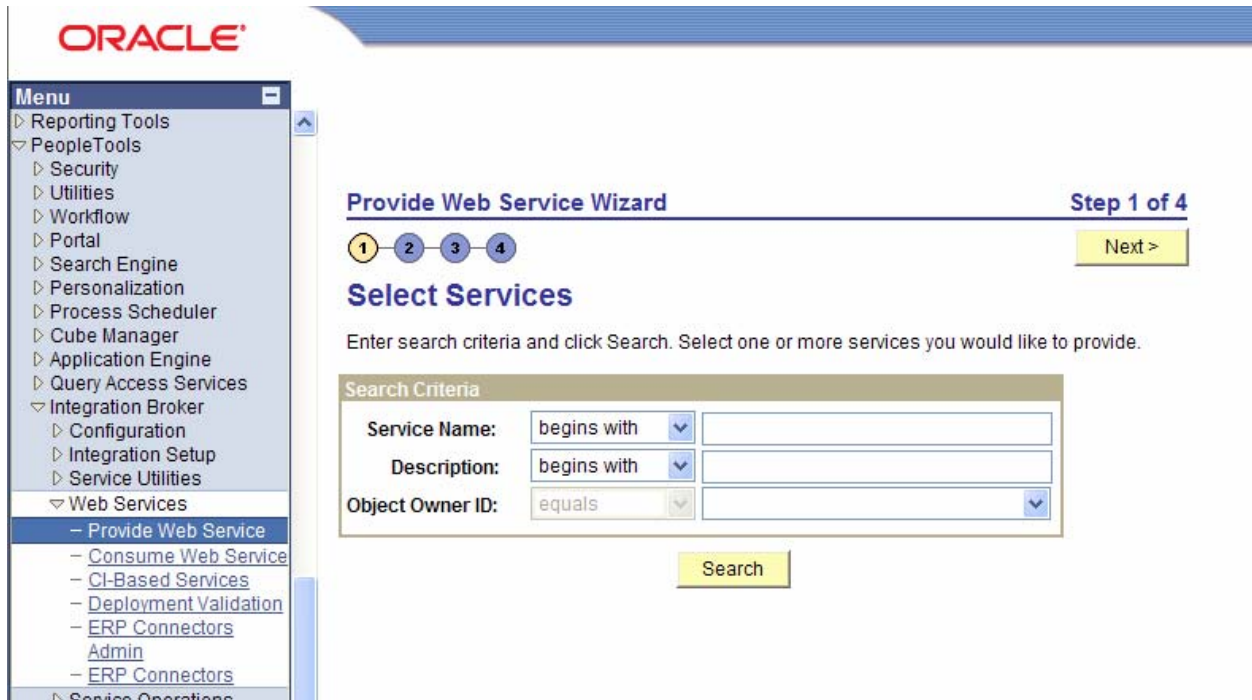
Why partner with Oracle Fusion Middleware

When Oracle purchased PeopleSoft Enterprise, JD Edwards and Seibel Systems in 2005 & 06, the technical direction of these products became more apparent. Oracle would eventually combine the three products in a 'best of breed' fashion. Having PeopleSoft HCM, a blend of Oracle E-business Financials and JD Edwards Material Management applications and Seibel CRM applications. To reach this state of application nirvana, all the applications will be held together by the Oracle Fusion Middleware. Beginning with PeopleTools 8.48, components of FMW have already been embedded and certified in PeopleSoft Applications. An example of this is XML publisher. The sooner you organization adopts and embraces this technology the easier it will be to transition to the new middleware architecture when the time comes to upgrade your existing systems.. When the first release of Fusion arrives in the not too distant future your organization will be primed to implement and thrive.

SOA related features of PeopleTools 8.48

Beginning with PeopleTools 8.48, Integration Broker has been significantly redesigned. It was redesigned in a fashion to work more easily and seamlessly with Fusion Middleware. It was redesigned to more easily accommodate the SOA architecture that will become the backbone of future Enterprise Applications. An additional option has

been made available regarding Web Servers. Along with BEA Weblogic (recently acquired by Oracle), and Websphere, Oracle Application Server is now included and certified with PeopleTools. Application Messages are now called 'Services'. Message channels have been renamed 'Queues'. There is also an additional security object to consider. You now have the ability to allow or deny access to specific web services which are set at the permission list level. Enhanced security protocols (AS2, WS-Security) have been adopted in the new in PeopleSoft Enterprise release. All Application Messages and Component Interfaces can easily be published as a web service by using the delivered wizard that generates a WSDL based on the service meta-data definition:



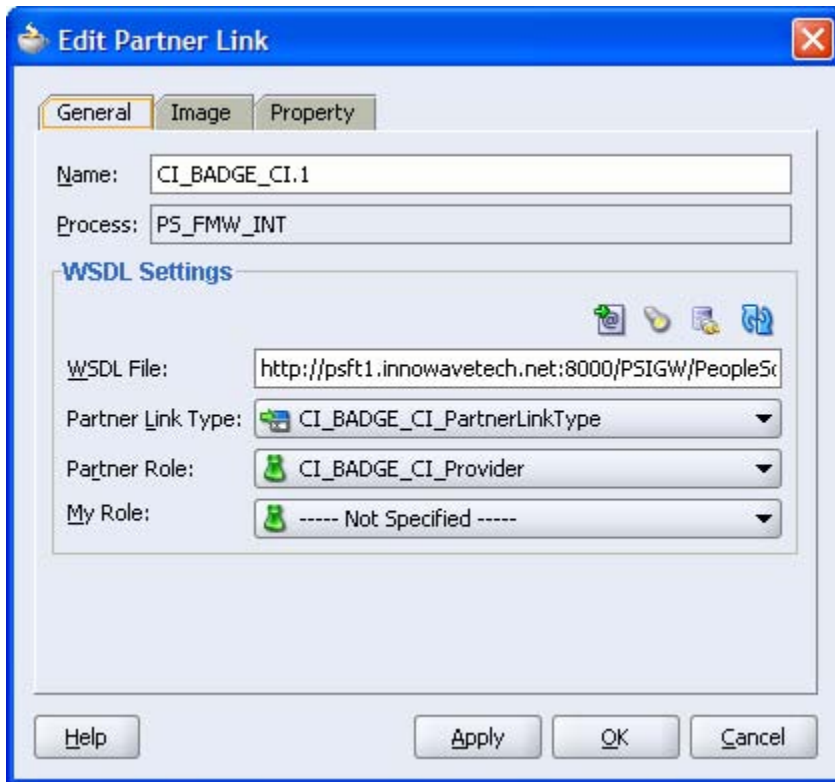
You choose the service you want to generate a WSDL for and it is created and inserted in your local WSDL repository. You are also presented with the option to generate the SOAP template for the service just created. This rapidly accelerates the testing and development cycles that are crucial in building successful integrations. This helps

organizations realize a greater ROI in their investments, especially relating to integrations.



The screenshot displays the Oracle PeopleTools interface for the 'Provide Web Service Wizard'. On the left is a navigation menu with categories like Reporting Tools, PeopleTools, and Web Services. The 'Provide Web Service' option is selected. The main content area is titled 'Provide Web Service Wizard' and 'Confirm Results'. It contains a message: 'View the WSDL Generation Log to confirm the results of the wizard.' Below this is a 'WSDL Generation Log' window with the following text: 'Service: CI_BADGE_CI has been exported.', 'Inserted WSDL: CI_BADGE_CI.1 in the repository', and 'Generated WSDL URL: http://psft1.innowavetech.net:8000/PSIGW/PeopleSoftServiceListeningConnector/CI_BADGE_CI.1.wsdl'. At the bottom of the wizard are two buttons: 'Provide Another Service' and 'Generate SOAP Template'.

After generating a web service, it is simple to incorporate that in a BPEL process. To do so you simply drag a 'Partner Link' to the BPEL palette and provide the web service URL. Then the PeopleSoft Service is available to manipulate and use in the process.



Additionally, there is another wizard which allows you to consume a WSDL supplied from another PeopleSoft application, 3rd party system or process that you have created in BPEL PM.

Menu

- > Reporting Tools
- > PeopleTools
 - ▷ Security
 - ▷ Utilities
 - ▷ Workflow
 - ▷ Portal
 - ▷ Search Engine
 - ▷ Personalization
 - ▷ Process Scheduler
 - ▷ Cube Manager
 - ▷ Application Engine
 - ▷ Query Access Services
 - ▼ Integration Broker
 - ▷ Configuration
 - ▷ Integration Setup
 - ▷ Service Utilities
 - ▼ Web Services
 - Provide Web Service
 - **Consume Web Service**
 - CI-Based Services
 - Deployment Validation
 - ERP Connectors
 - Admin
 - ERP Connectors
 - ▷ Service Operations Monitor
 - ▷ File Utilities
 - ▷ REN Server Configuration
 - ▷ Setup Manager
 - ▷ MultiChannel Framework

Consume Web Service Wizard

Step 1 of 8

- 1
- 2
- 3
- 4
- 5
- 6
- 7
- 8

Next >

Select WSDL Source

Select the source of the WSDL you would like to consume.

WSDL Sources

UDDI

WSDL URL

WSIL URL

File

Legacy WSDL (Prior to 8.48)

You have the choice to use multiple WSDL sources to consume. These new wizards provide the ability to quickly and easily ‘open up’ your PeopleSoft system to multiple external sources. You are also provided the facility where you can inspect, modify and validate all the services available in your PeopleSoft environment. Also provided is the ability to add or modify routings and handlers associated with specific services.

Benefits of SOA paradigm

The philosophy of SOA is to leave business applications alone but build modular services that extract the necessary information and can be easily integrated and reused, thereby creating a more adaptable IT infrastructure. PeopleSoft Enterprise PeopleTools (8.48 and above) already has the capability to produce and consume Web Services and can be seamlessly integrated into SOA applications. By having all your integrations in a centralized repository, you have a 'one stop shop' for all integration points. This architecture replaces 'point to point' current legacy integrations. The less integration points you have, the less chance for failure. The less customization you have to facilitate integrations, the less risk you realize when it's time to upgrade. As we all know, the less that your ERP system is customized the easier an upgrade will be. The streamlined BPEL Graphical User Interface with drag and drop icons is more inviting than the legacy character based screens. Developers can wrap legacy applications with web services to quickly and easily create services that can be called and reused by multiple applications. Because Oracle SOA is built on open standards you can eliminate technology specific code and reduce your dependence on a single vendor or technology.

Conclusion

Oracle's BPEL Process Manager is a key requirement for delivering SOAs, supports the industry-standard BPEL specification backed by Microsoft, IBM, SAP and BEA, and is widely recognized as an enterprise blueprint for reducing the cost, complexity and inflexibility of integration projects. This will benefit your organization by providing shorter test cycles, increased automation and a more reliable environment. PeopleSoft Enterprise is evolving as a key component that will be based on Fusion Middleware.