

Vertex O Series - Global Enterprise Tax Management For Oracle, Peoplesoft and JD Edwards Users

Dave Homiak, Vertex Inc

Scott Lambertson, Vertex Inc

Jeff Absher, Vertex Inc

Presenter Information

- Dave Homiak, Oracle Channel Manager, Vertex Inc.
- Scott Lambertson, Account Executive, Vertex Inc.
- Jeff Absher, Director of PeopleSoft and JD Edwards Solutions Practice

Agenda

- Session Objectives
- Vertex Background
- Addressing Tax Compliance
- Vertex O Series – Global Tax Automation
- Integrations with Oracle Applications
- Successful Customer Implementations

Session Objectives

- Understand why companies implement Vertex
- Understand successful implementation processes
- Provide examples of business issues solved

Vertex Background

- Comprehensive family of products and services in sales and consumer use tax and International tax
- 30 year history in providing global tax management solutions
- Vertex has partnered with:
 - Oracle since 1992
 - PeopleSoft since 1994
 - JD Edwards since 1986
- O Series Integrations for Oracle, PeopleSoft and JD Edwards applications
- Certified Support Center Practices (SCP)
- Over 370 O Series software implementations

Addressing Tax Compliance

- Why Automate the Tax Compliance Process?
- Limitations of ERP Tax Functionality
- How Vertex O Series Meets the Requirements

Why Automate the Tax Compliance Process?

- Reduces time spent on tedious aspects of compliance
- Improves tax decision making and visibility for Sarbanes-Oxley compliance
- Expedites cash collections through more accurate customer billing
- Lowers potential audit exposure
- Increases time spent on strategic tax planning
- Turns tax compliance from a cost center to a profit center

Limitations of ERP Tax Functionality

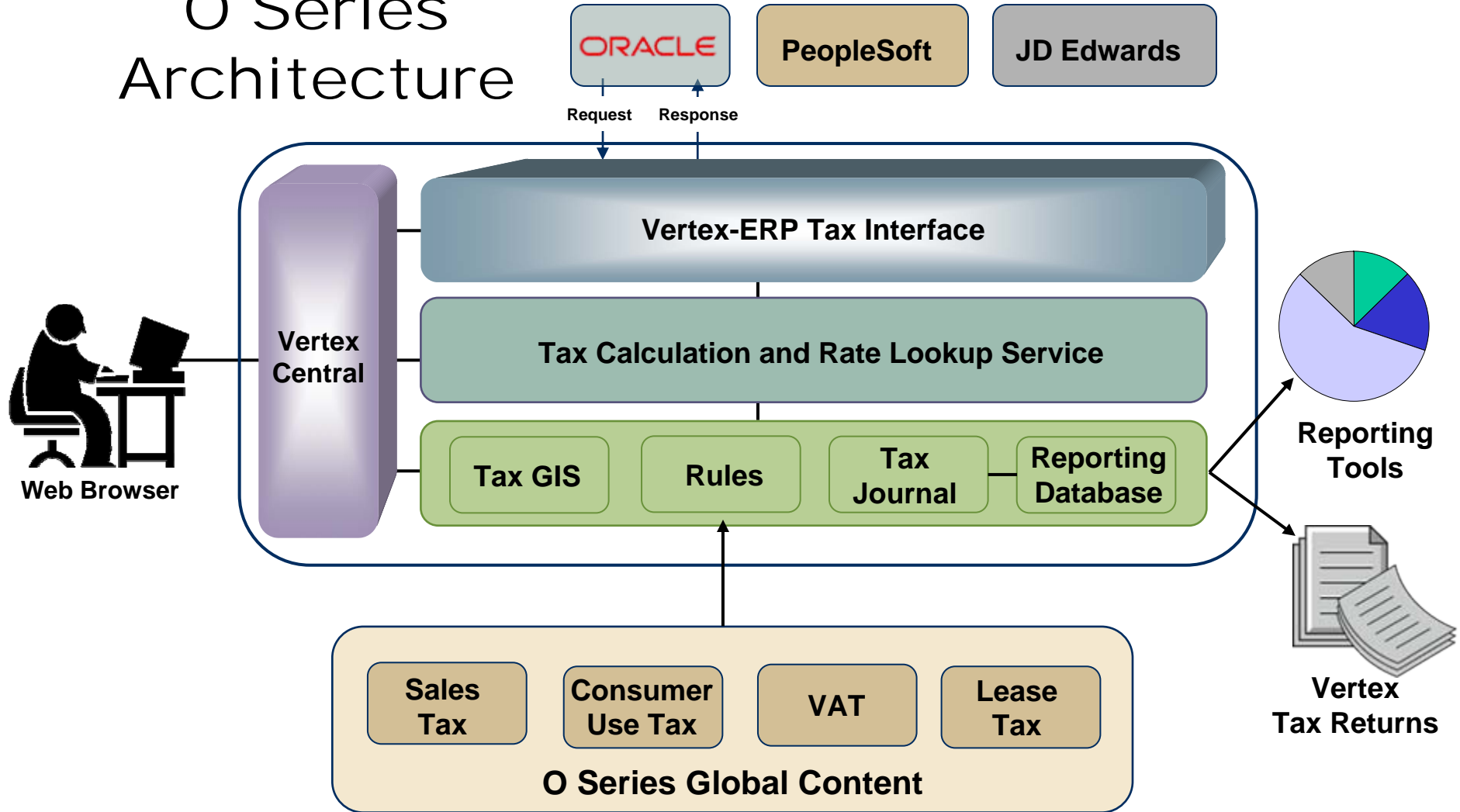
- Inability to calculate origin based tax, quantity thresholds, or district taxes
- Everything is taxed at the ship to location
- No tax rate information
 - Manual research and update process which is time consuming and costly on tax department
- No address validation when creating new customers/vendors
- Inability to estimate tax on purchases
- Inability to verify that vendors are charging your company the proper amount of tax
- Inability to determine taxation based on how a product is being used
- No automated solution to prepare and file returns

Vertex O Series – Global Tax Automation

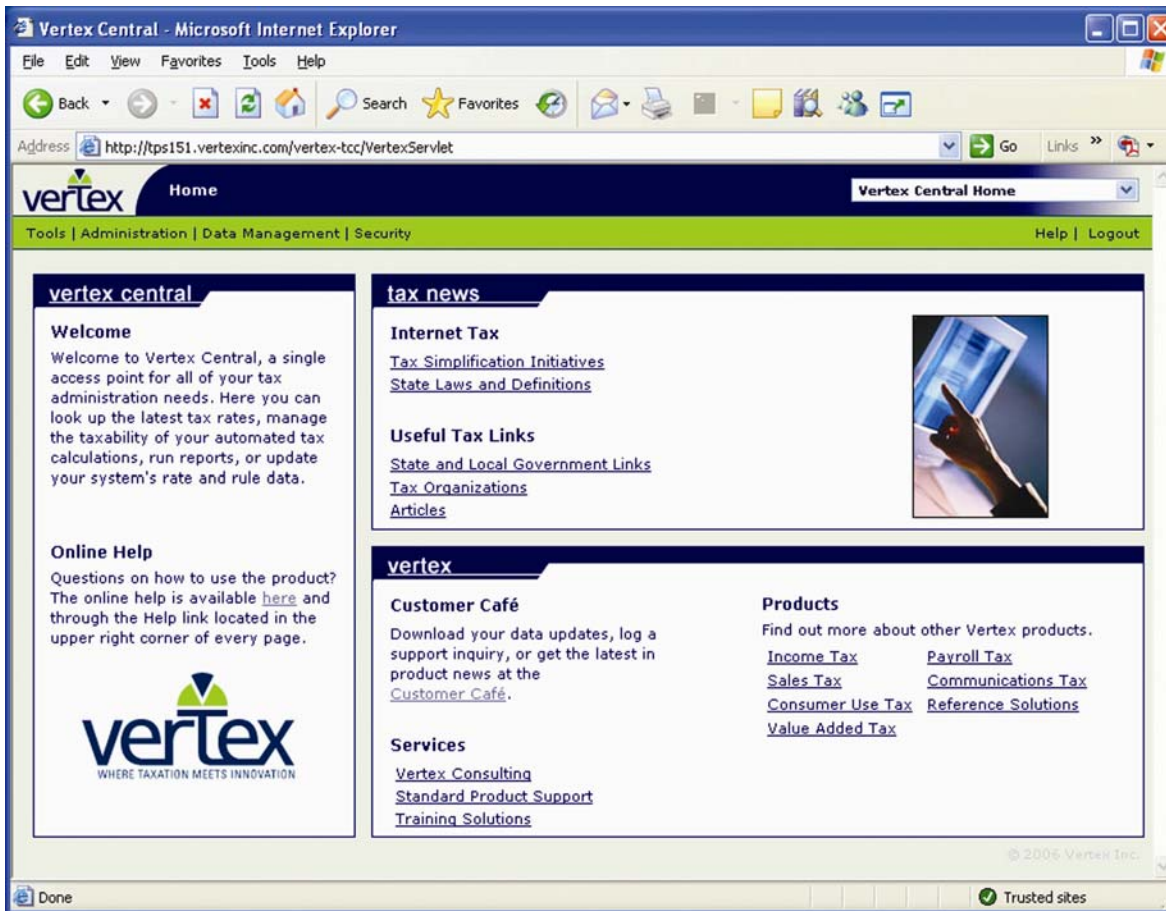
Vertex O Series is an end-to-end solution with a suite of integrated tax modules – sales, consumer use, value added and industry specific data.

- State-of-the-Art Web Services Architecture
- Centralized Control and Deployment
- Superior Flexibility
- Unparalleled Global Content
- Assured Consistency and Accuracy

O Series Architecture

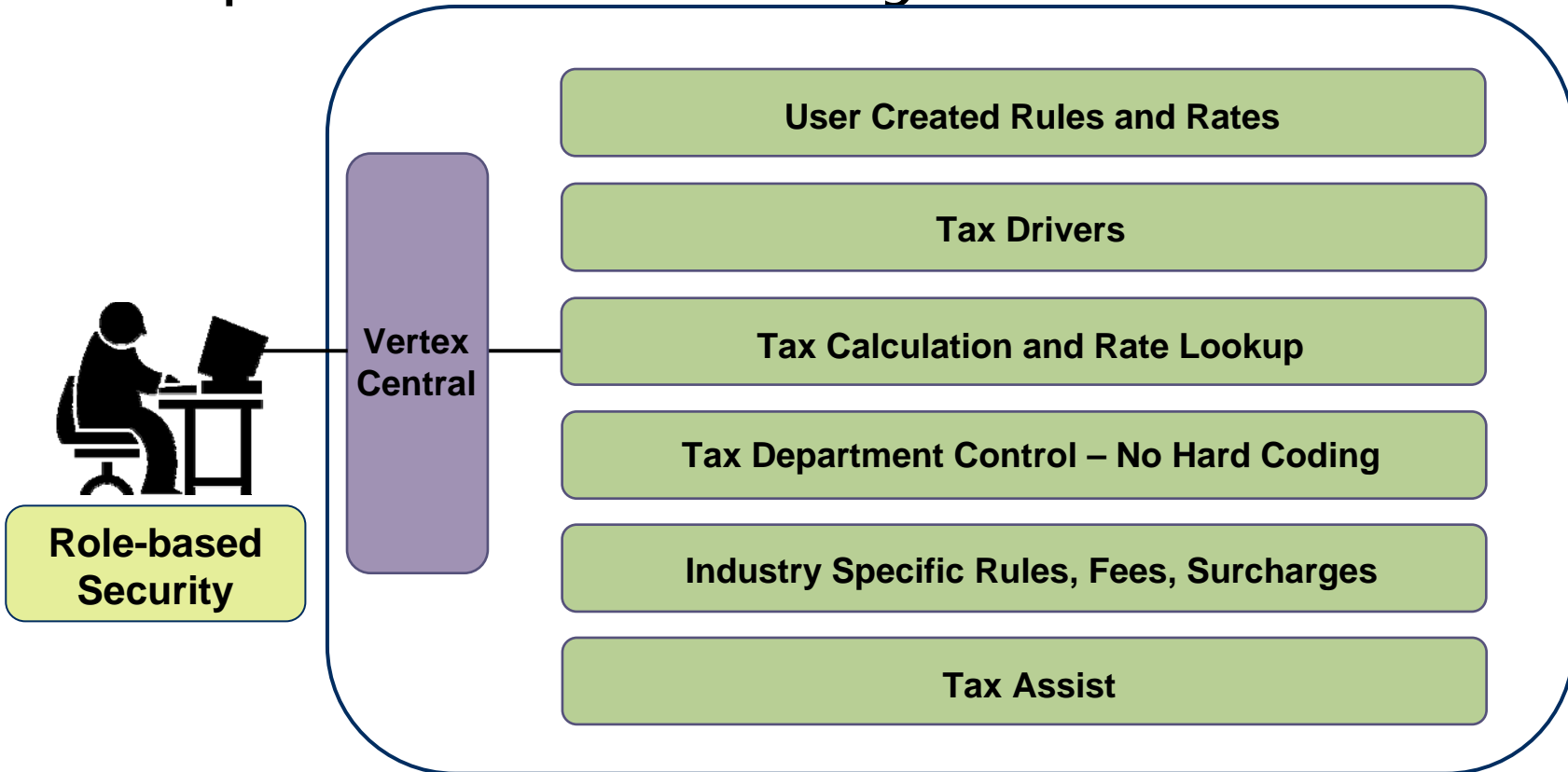


Centralized Control and Deployment



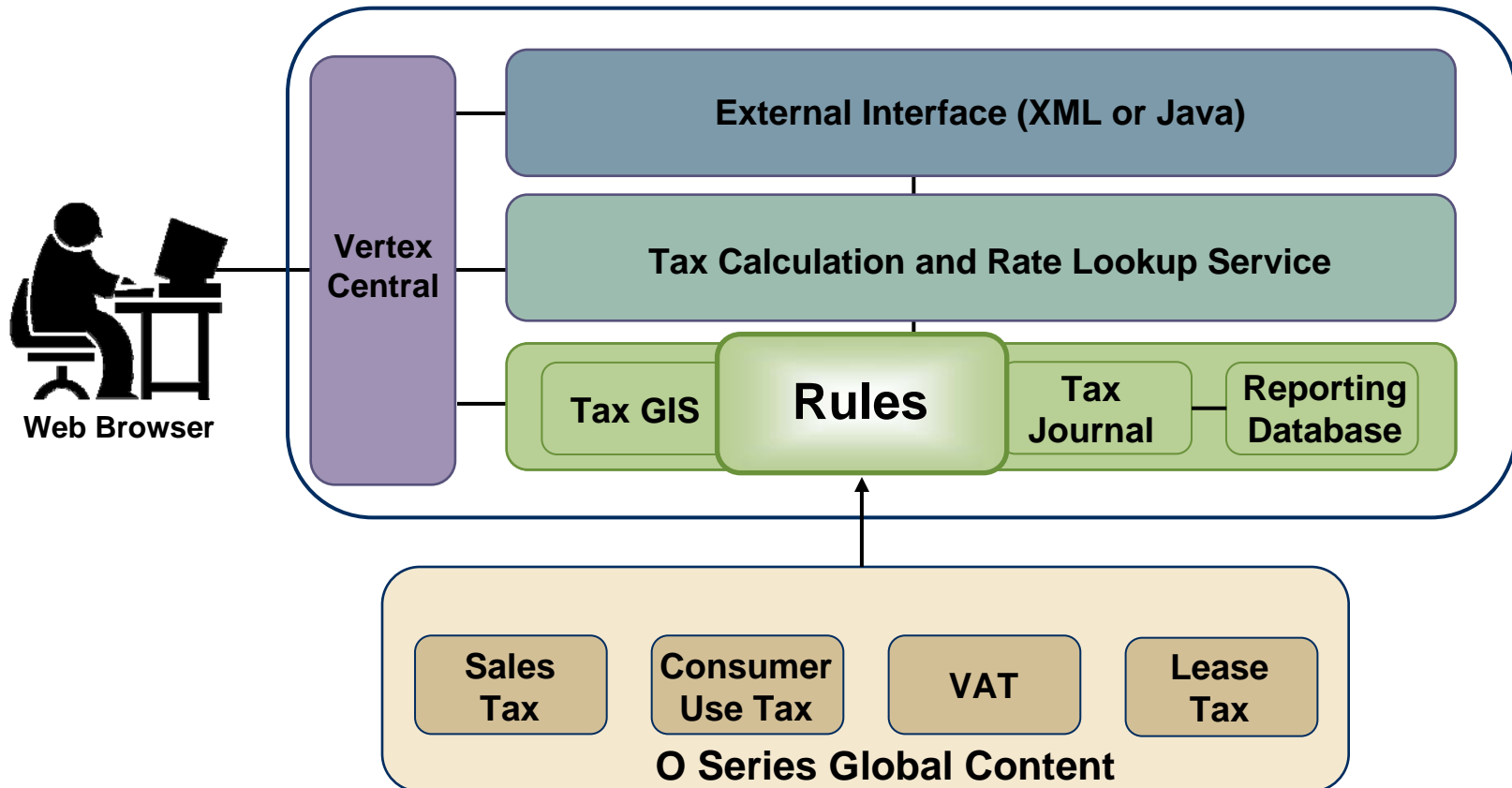
One instance of O Series allows for centralized maintenance of all tax compliance activities.

Superior Flexibility



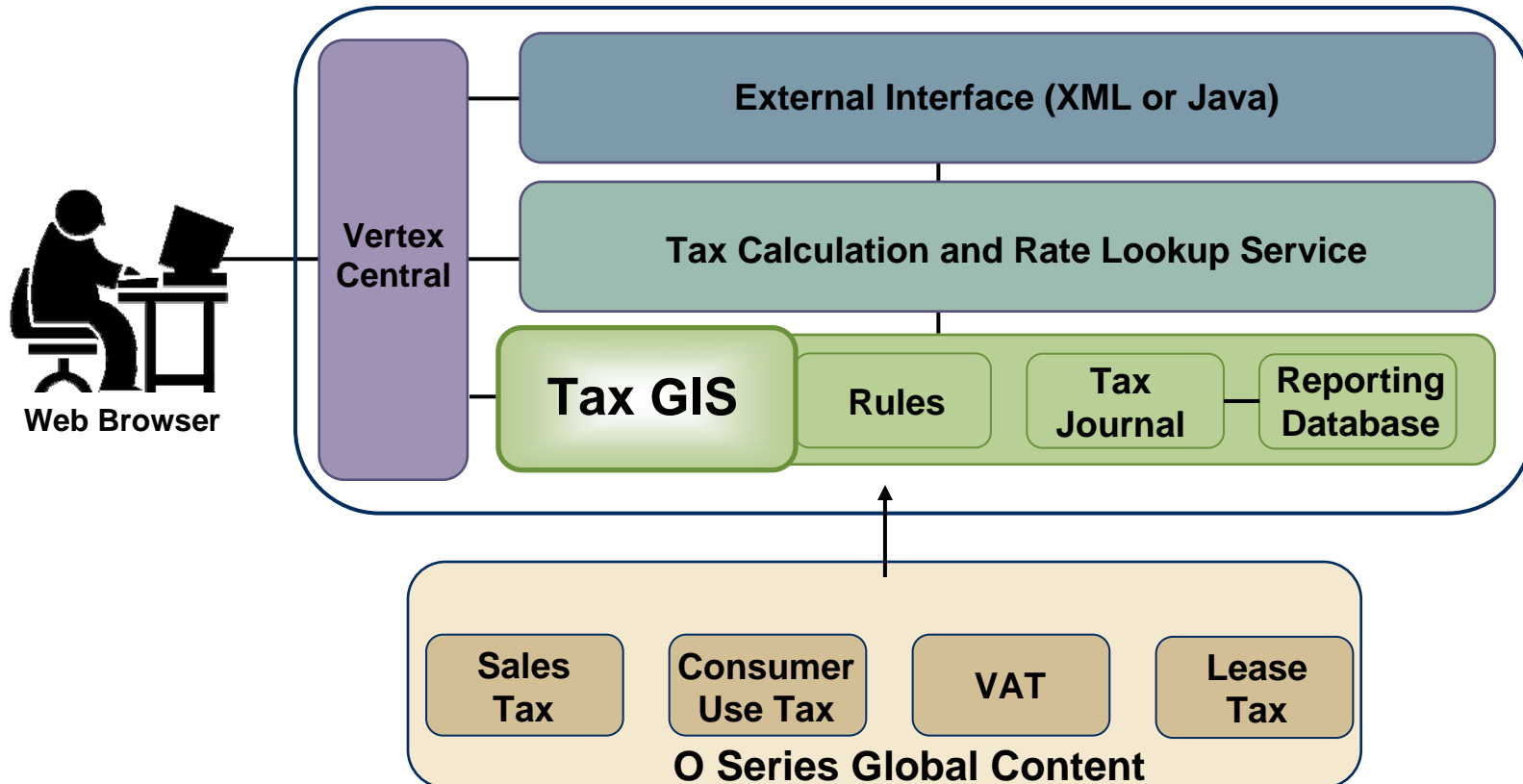
O Series can be configured to handle the most complex tax scenarios in the world.

Unparalleled Global Content



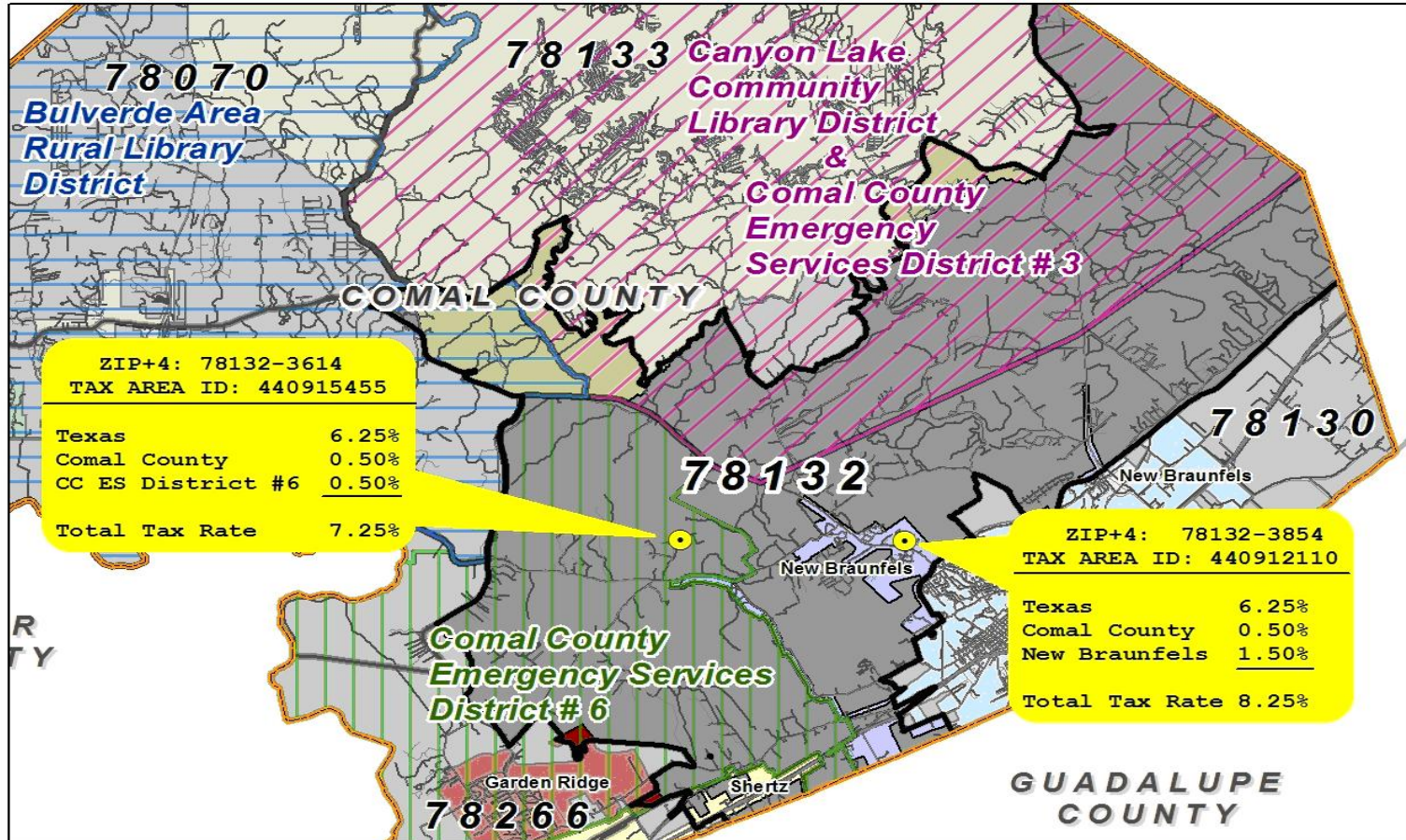
Vertex provides the industry's most accurate, reliable global tax content.

Assured Consistency and Accuracy



Accurate calculation, tracking and reporting to the lowest district level

Assured Consistency and Accuracy



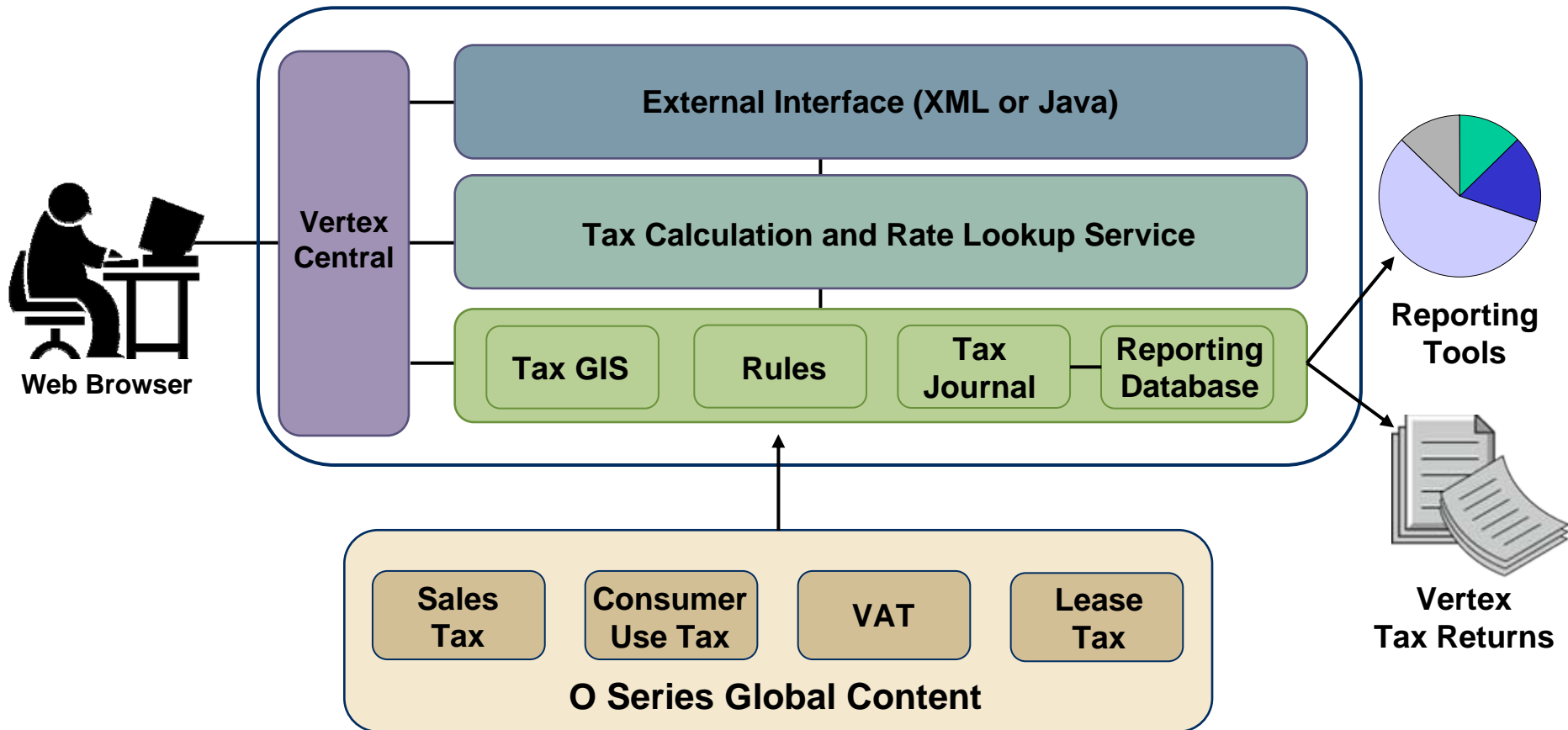
Comal County, Texas

Source: Vertex TaxGIS
May 22, 2008
Data contained on this slide has been
generalized for presentation purposes
and should not be used for
jurisdiction identification.

- Streets
- Comal County
- Surrounding Counties
- ZIP Code 78132
- Surrounding ZIP Codes
- Bulverde Area Rural Library District
- Canyon Lake Community Library District
- Comal County Emergency Services District #3
- Comal County Emergency Services District #6



Standard Reports



Standard Reports

Filter Capabilities

- U.S. Transaction Detail
- U.S. Tax Detail
- U.S. Transaction Summary
- U.S. Transaction Recap
- U.S. Invoice Verification
- Int'l Transaction Detail
- Int'l Tax Detail
- Int'l Transaction Summary
- Int'l Invoice Verification
- Taxpayer Report
- Taxability Drivers Report
- Customer Report
- Exemption Certificates
- Direct Pay Permit Report
- Taxability Mapping Report
- User Defined Rules Report
- Vendor Report
- Supplier Report
- Flexible Fields Report
- Int'l Certificate Report

Custom Reporting / Analytics

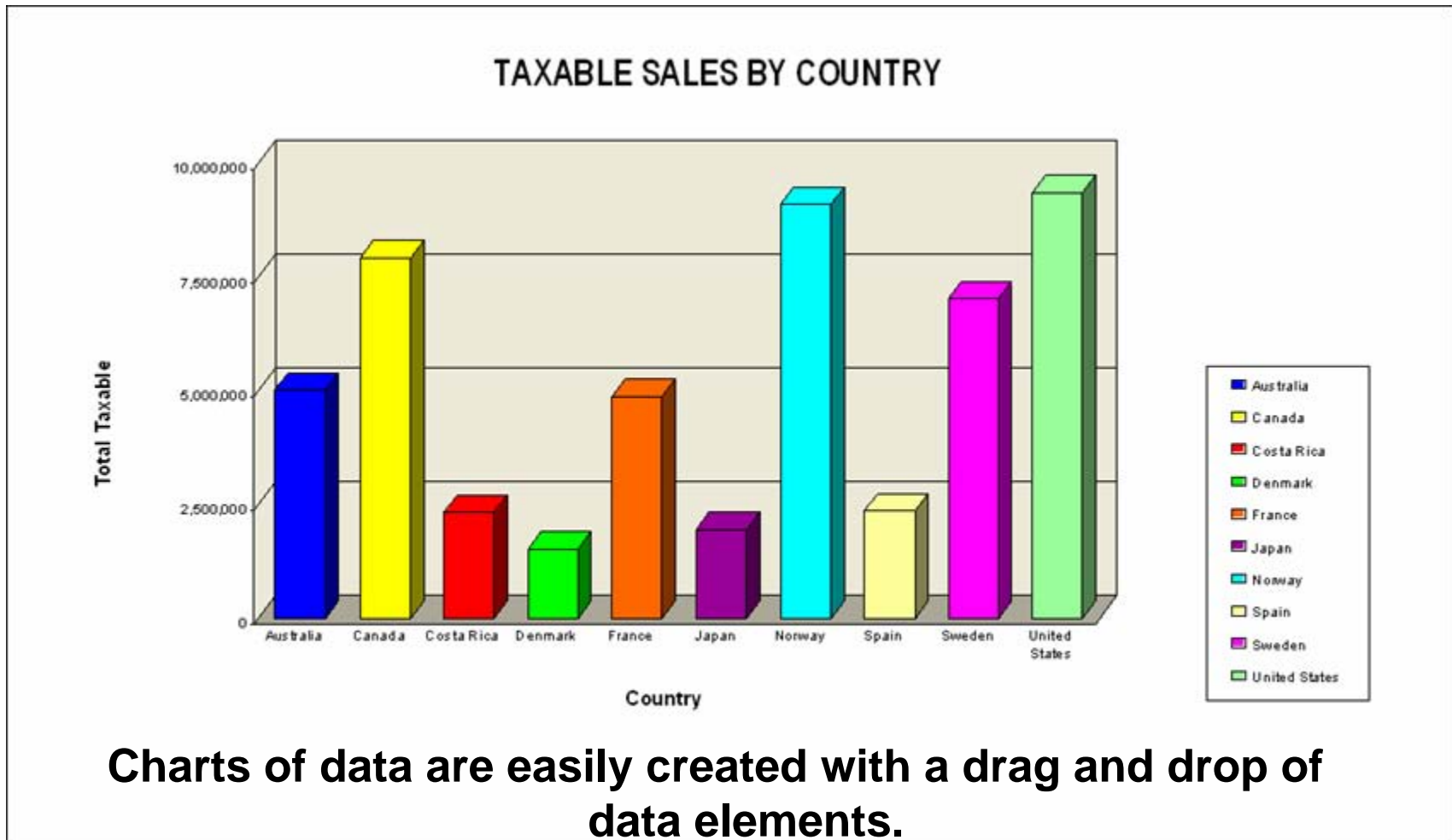
The screenshot shows a Microsoft Internet Explorer browser window displaying the Vertex Central Home web application. The browser's address bar shows the URL: <http://tps151.vertexinc.com/vertex-tcc/VertexServlet?eventName=app.tcc.menu.tools.reportsEvent&actionName=menuAction&>. The page title is "Report Application - Microsoft Internet Explorer".

The web application interface includes a navigation menu on the left with categories like "Standard Reports", "Reporting and Analysis", and "Schedule". The main content area is titled "Transaction" and features a "By Name" dropdown menu and a "Sort" button. Below this, there are several report options:

- Consumer Use Tax Line Item Detail**: This view provides access to line item level detail for Consumer Use Tax transactions. It includes a timestamp "Wednesday Jul 12, 2006 10:41:27 AM" and links for "View Results" and "Delete Results".
- Consumer Use Tax Summary by Day**: This view provides access to summary data for Consumer Use Tax transactions. Line items are summarized by day. A note states: "Generated results are not currently available for this report."
- Consumer Use Tax Summary by Month**: This view provides access to summary data for Consumer Use Tax transactions. Line items are summarized by month. A note states: "Generated results are not currently available for this report."
- Line Item Synchronization Services**: This view provides access to line items that were processed using synchronization services. A note states: "Generated results are not currently available for this report."
- Sales Tax Line Item Detail**: This option is visible at the bottom of the list.

Select from a variety of transaction data views and click and drag options for simple and easy report creation.

Custom Reporting / Analytics



Charts of data are easily created with a drag and drop of data elements.

Integrations with Oracle Applications

Oracle E-Business Suite

- Includes 2 Primary Links for the Oracle E-Business Suite release 11i:
 - **BILLING** for U.S. Sales Tax and VAT Output; interfaces with
 - Receivables (as well as iReceivables)
 - Order Management
 - Project Billing and Service (via AutoInvoice)
 - CRM (iStore and Quoting)
 - **PROCUREMENT** for Consumer's Use Tax in U.S. and VAT Input; interfaces with
 - Payables (includes Project activity)
 - Purchasing (includes Project activity)
 - Inventory

PeopleSoft Enterprise

- Vertex O Series Interfaces to PeopleSoft Enterprise 8.8, 8.9 & 9.0
- Tax Calculations in:
 - **Order Management** (Sales Quotes and Sales Orders)
 - **Billing** (Sales Quotes and Sales Invoices)
 - **Accounts Payable** (Verification of tax on supplier invoices)
 - **Purchasing** (Calculation of Use Tax on Purchase Orders)
- Integration maintained by PeopleSoft Development

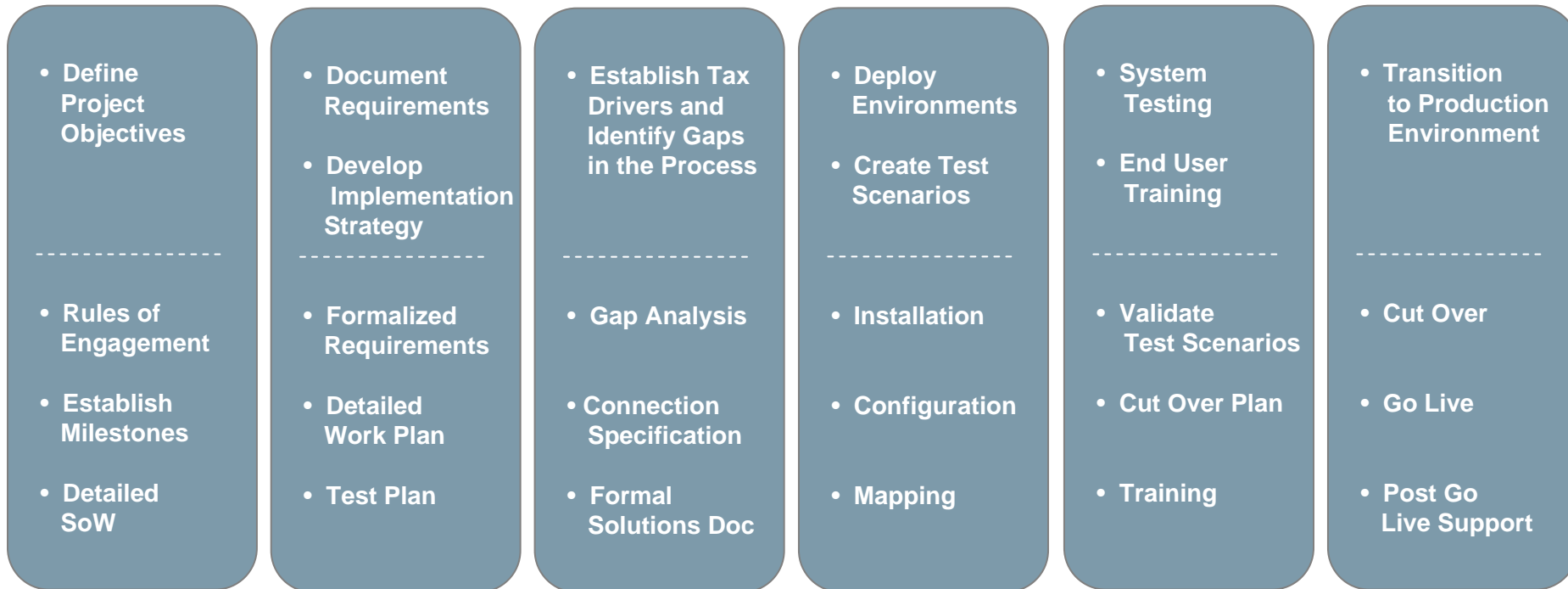
JD Edwards Enterprise One

- Interface available for Enterprise One 8.10, 8.11 and 8.12
- Integration maintained by Vertex Consulting
- Tax Calculations in:
 - **Sales Order Management, CSMS, Contract and Service Billing**
 - Automatic assignment of global Tax Area IDs to Address Book
 - Closer control of customer exemption status
 - Fewer accounting adjustments
 - Consistently apply correct situs and place of supply rules
 - Superior customer service
 - **Accounts Receivable**
 - Correct tax values help reduce receivable days outstanding
 - Accurate tax adjustments when adjusting invoices
 - **Accounts Payable/Procurement**
 - Verify vendor charged tax to reduce overpayments
 - Automate use tax accrual

Keys to Successful Implementation

- Best Practices Methodology
- Implementation Benefits
- Implementation Challenges
- Successful Customer Engagements

Best Practices Project Methodology



← 3-6 Months →

Implementation Benefits

- Tax, Accounts Payable, Purchasing and Finance departments were freed to work on more strategic projects
- Gained confidence in the data and felt less exposed for audits
- Noticeable cost savings resulting from the verification of taxes assessed on purchase orders and sales orders
- Increased cash flow by not having to put as much money in reserves to pay future taxes

Implementation Challenges

- Preparing your tax and business requirements
- Identifying internal liabilities and weaknesses
- Preparing for potential technical set-backs
- Preparing for client staff changes

Oracle/Vertex Suite of O Series Clients

Oracle E-Business Suite

Fidelity National Financial
Teva Pharmaceuticals
Raytheon Corporation
NCH Corporation
HBMA Management

PeopleSoft Enterprise

U.S. Oncology, Inc.
Labcorp
Dolby Laboratories
Sunrise Senior Living

JDE EnterpriseOne

Mannatech
Tetra Technologies
Invitrogen
Covidian

For More Information on Vertex

- Visit the Vertex Booth (#1349) in the Exhibit Hall
- *www.vertexinc.com*
- 800-355-3500



1041 Old Cassatt Rd
Berwyn, PA 19312