

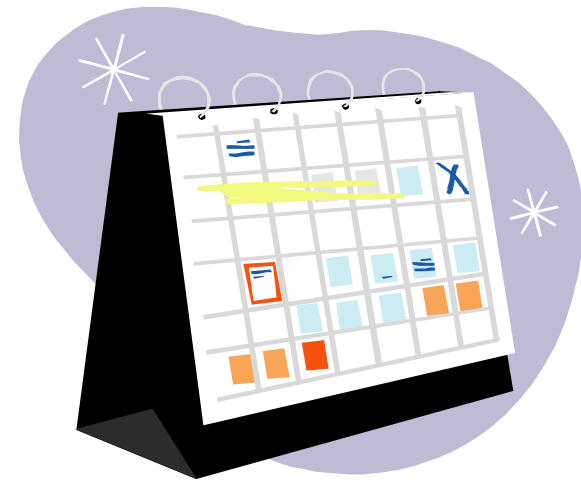
Oracle System Administrator Fundamentals

Jim Childerston

Cline Consulting and Training Solutions, LLC

Agenda

- Introduction
- The System Administrator's job
- Responsibilities
- Menus
- Custom Programs/Reports
- Request Groups
- User Management
- Very Cool Profile Option



The System Administrator's Job

- Control
 - New Users
 - Security
 - Monitoring
 - Profiles
 - Concurrent Processing
- Liaison
 - Front-end vs. DBA



Responsibilities

- Another layer of security
- Allow access to
 - Applications
 - Set of books
 - Menu paths
 - Functions
 - Reports/Programs

Responsibility	Security Group
Alert Manager, Vision University	Standard
Assets, Vision University	Standard
Cash Management, Vision University	Standard
Desktop Integrator	Standard
Fixed Assets Manager	Standard
General Ledger, Vision University	Standard
Grants Accounting, Vision University	Standard
HRMS Manager, Vision University	Standard
Labor Distribution, Vision University	Standard
Oracle Web ADI	Standard
Payables, Vision University	Standard
Purchasing, Vision University	Standard
Receivables, Vision University	Standard
Super HRMS Manager, Vision University	Standard
System Administrator	Standard

Responsibilities (continued)

- Pre-defined Responsibilities
 - List available with Application User Guide
- Custom Responsibilities
 - Restrict menu paths
 - Remove functions
 - Customize list of available programs and reports
 - Naming conventions
- *Cool Report: Active Responsibilities*

File Edit View Favorites Tools Help

http://linuxbox.ccatsolutions.com:8001/OA_CGI/FND...

□(s7B Active Responsibilities and Their Active Users □(s0B

Application	Responsibility	Security Group	User	Start
Activity Based Management	ABM Intelligence	Standard	ABM_SYSADMIN	26-FEB-02
			ABM_SYSADMIN2	01-MAR-02
			ABM_USER	26-FEB-02
			EBUSINESS-MFG	08-AUG-01
Activity Based Management	ABM Manager	Standard	ABM_SYSADMIN	26-FEB-02
			ABM_SYSADMIN2	01-MAR-02
			ABM_USER	26-FEB-02
			ARABIC	08-JUN-03
			CHINESE	09-JUN-03
			DUTCH	08-JUN-03
			EBUSINESS-MFG	08-AUG-01
			FRENCH	08-JUN-03
			GERMAN	08-JUN-03
			HUNGARIAN	09-JUN-03
			JAPANESE	09-JUN-03
			KOREAN	09-JUN-03
			POLISH	09-JUN-03
SPANISH	08-JUN-03			
SYSADMIN	11-FEB-00			
Activity Based Management	ABM Supervisor	Standard	ABM_SYSADMIN	26-FEB-02
			ABM_SYSADMIN2	01-MAR-02
			ABM_USER	26-FEB-02
			EBUSINESS-MFG	08-AUG-01
			SYSADMIN	19-APR-00
Advanced Benefits	Benefits Manager, Vision Health System	Standard	EBRANNON	01-JAN-95
			FBURNS	01-JAN-95
			HBLAKE	01-JAN-95
			MDALEY	01-JAN-95
			SBISHOP	01-JAN-95

Custom Responsibility

File Edit View Folder Tools Window Help

Responsibilities

Responsibility Name: **General Ledger No Encumbrances**

Application: **General Ledger**

Responsibility Key: **GENERAL_LEDGER_NO_ENCUMBRAN**

Description: **OAUG 2008 Cust Resp Example**

Effective Dates: From **28-FEB-2008** To

Available From

- Oracle Applications
- Oracle Self Service Web Applications
- Oracle Mobile Applications

Data Group

Name: **Standard**

Application: **General Ledger**

Request Group

Name

Application

Menu: **GL_USER**

Web Host Name

Web Agent Name

Menu Exclusions Excluded Items Securing Attributes

Type	Name	Description
Menu		

Menus

- Pre-defined Menus
 - Available with every pre-defined responsibility
 - Customizable by “excluding” forms and functions in the responsibilities form



Custom Menus

- Build from the bottom up
- Use an organization chart structure
- Use delivered forms and subfunctions
- Create a logical hierarchical structure
- Assign to a responsibility
- Do Not reinvent the wheel
- *Cool Report: Function Security Menu Report*

Function Security Menu Report

Full Menu with Function Security				29-FEB-08 12:41		
Responsibility: General Ledger User				Page 1		
Main Menu: GL_USER				Function Security Rule		
Level	Prompt	Sub Menu	Function	Description	Type	Name
1	Journals	GL_U_JOURNAL		Enter actual journals		
2	Enter		Enter Journals	Enter journals		
2	Define Recurring		Define Recurring Journals	Define recurring journal formula		
2	Generate Recurring		Generate Recurring Journals	Generate recurring journals		
2			Budgetary Control Transactions	Inquire on budgetary control transactions		
2			Enter Journals: Post	Post in the Enter Journals or Enter Encumbrances forms		
2			Enter Journals: Reverse	Reverse in the Enter Journals or Enter Encumbrances forms		
2		XLA_SL_DRILLDOWN				
3			XLA: Subledger Accounting Details	Subledger Accounting Lines		
3			XLA: View Accounting Lines	View Accounting Lines and T Accounts		
3			XLA: INV View Material Transactions	Inventory Material Transactions		
3			XLA: WIP View Resource	WIP Resource Transactions		

Registering Custom Reports/ Programs

- Typically used for custom reports
- Developer responsibilities
 - Create executable
 - Define parameters
 - Provide setup instructions



Registering Custom Programs

Concurrent Programs

Program: **JimStudent XML Output** Enabled

Short Name: **POJIMXML**

Application: **Purchasing**

Description: **Blanket and Planned PO Status Report**

Executable

Name: **POXPOBPS** Options:

Method: **Oracle Reports** Priority:

Request

Type:

Incrementor:

MLS Function:

Use in SRS Allow Disabled Values

Run Alone Restart on System Failure

Enable Trace NLS Compliant

Output

Format: **XML**

Save (C)

Print

Columns:

Rows:

Style: **Landscape**

Style Required

Printer:

Copy to... Session Control Incompatibilities Parameters

Request Security Groups

- Specify reports, requests and concurrent programs available to users via Standard Report Submission
- Assigned to a responsibility
- Convenient for users



Custom Request Security Group

File Edit View Folder Tools Window Help

Request Groups

Group: **GL_OAUG_2008_Request_Group**

Application: **General Ledger**

Code: **GL_OAUG_RG**

Description: **OAUG Demo for create request group**

Requests

Type	Name	Application
Program	General Ledger - (132 Char)	General Ledger
Program	Trial Balance - Detail	General Ledger
Program	Account Analysis - (132 Char)	General Ledger
Program	Account Analysis - (180 Char)	General Ledger
Program	General Ledger - (180 Char)	General Ledger

Description: **General Ledger**

User Management

- New in 11.5.10
- Founded on Role-based Access Control (RBAC)
- New Registration Processes
- Delegated Administration
- Role Inheritance Hierarchies

Registration

- Self-service account requests
 - Allows individuals such as customers to request new user accounts
 - Identity verification
- Requests for additional access
 - Existing users request additional roles
 - Eligibility based on current roles
- Account creation by Administrators

Registration Process

ORACLE User Management [Home](#) [Logout](#) [Preferences](#) [Help](#)

User Management

[Users](#) | [Roles & Role Inheritance](#) | [Role Categories](#) | **Registration Processes**

Registration Processes

To find specific Registration Processes, type your search text, and then click Go.

Search

Name

Code

Application 🔑

Type ▼

Role 🔑

Name	Code	Description	Type	Application	Role	Duplicate	Update
No search conducted.							

[User Management](#) | [Home](#) | [Logout](#) | [Preferences](#) | [Help](#)

Copyright 2000-2005 Oracle Corporation. All rights reserved. [Privacy Statement](#)

Delegated Administration

- Administrators more familiar with end users
- Can be designated at any level internally or externally
- Administration privileges
 - Determine users and roles managed
 - Based on users, roles and organizations

Role-based Access Control (RBAC)

- Improve existing security
- Organize security policies and function security
- One-time setup
- Permissions implicitly inherited based on role
- Simple modification of permissions for groups of users

Role Inheritance Hierarchies

- Roles are included in role-inheritance hierarchies
- Roles can have multiple sub-role and superior-role relationships
- Roles nested resulting in the inheritance of the sub-role by the superior role.

Traditional User Setup

File Edit View Folder Tools Window Help

Users

User Name: **NEW USER**

Password:

Description: **OAUG White Paper User**

Person: **Smith, Mr. Joseph**

Customer:

Supplier:

E-Mail: **jsmith@vision.com**

Fax:

Password Expiration

Days:

Accesses:

None

Effective Dates

From: **28-FEB-2008**

To:

Direct Responsibilities | Indirect Responsibilities | Securing Attributes

Responsibility	Application	Security Group	Effective Dates	
			From	To
General Ledger User	General Ledger	Standard	28-FEB-2008	<input type="text"/>
<input type="text"/>	<input type="text"/>	<input type="text"/>	<input type="text"/>	<input type="text"/>
<input type="text"/>	<input type="text"/>	<input type="text"/>	<input type="text"/>	<input type="text"/>
<input type="text"/>	<input type="text"/>	<input type="text"/>	<input type="text"/>	<input type="text"/>

Very Cool Profile Option

- Local Login Mask
(FND_SSO_LOCAL_LOGIN_MASK)
- Allows attributes on login screen
 - Username hint
 - Password hint
 - Cancel button
 - Forgot password link
 - Register here link
 - Language Images
 - Sarbanes Oxley Text



Questions?

Jim Childerston

jim@ccatsolutions.com

www.ccatsolutions.com