

# Final Acceptance Test (FAT) An Approach to Business Acceptance

Jesse J. Gerdes  
Emerson

# Final Acceptance Test

- The Method is Not Agile
- Is a Business Test
- Designed to Reduce Risk
- Exposes Design to “Real World” Activity

# Final Acceptance Test

- Risk Reduction
  - Demonstration that the Business is Ready
    - Policy/Process/Documentation
    - Training Effectiveness
  - Conversions
    - Data Quality
    - Required Time Frames

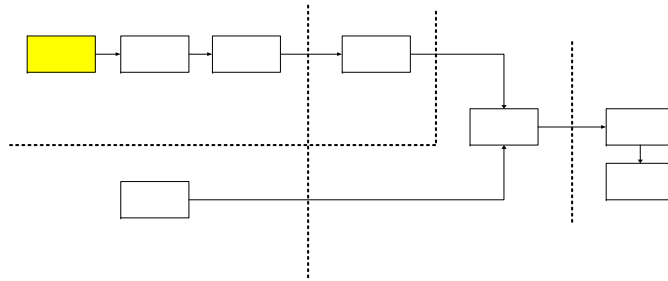
No Miracles

# Final Acceptance Test

- Three Cycles of Testing
  - Increasing Volume of Data
  - Increasing Business Involvement
  - Same Process Each Time



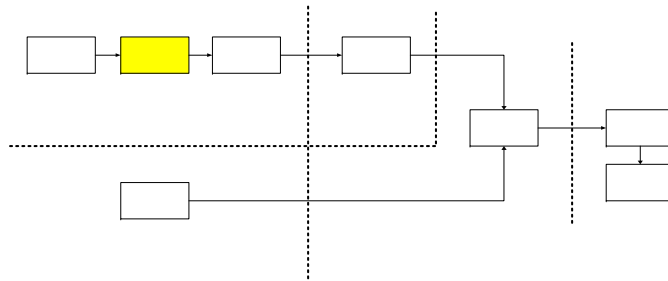
# Production System



- All Inputs to Conversion
- Conversion/Transaction Validation Reports
- Synchronized Business Cut Off Point
- Source of Transaction Collection

Conversion

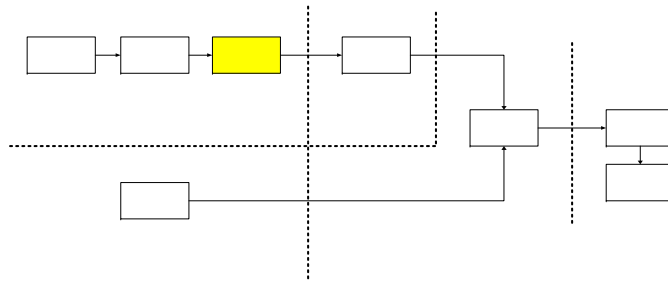
# Conversion



- Processes to Transform Data to New System
- Conversion Validation Results
- Data Error Reports

Conversion

# Manual Data

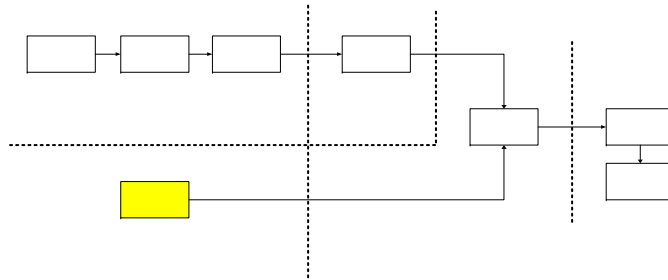


- Data Added by Non-Conversion process
  - Manually
  - Spreadsheet upload
  - Errors that kick out of Conversion

Conversion



# Collect Transactions

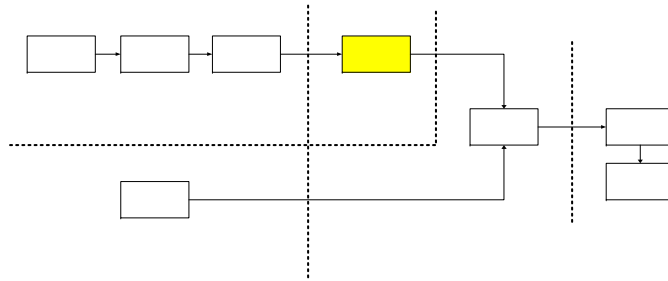


- Collect All Legacy Transactions
- Compare to New Business Process
- Gap Analysis
  - Create Transactions for Missing
  - Additional Data Elements

Must Keep Track of Changes

Conversion

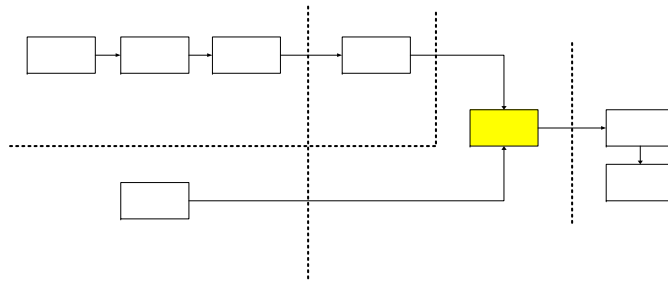
# Batch Runs Day 0



- Processes to Initialize New System
  - ASCP Run
  - Open Periods
  - Beginning of Day Interfaces

Conversion

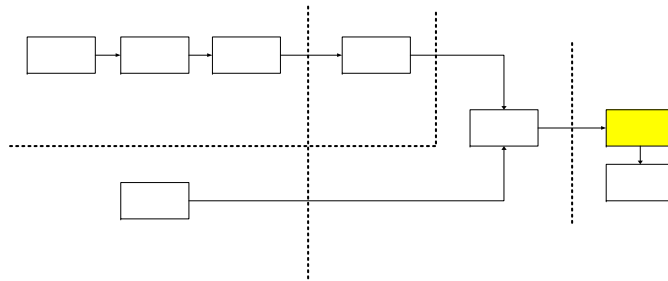
# Day 1 Transaction Entry



- Enter Transactions Captured from Legacy
  - Utilize New Business Process
  - Entry by Business Resources
  - Track Issues

Conversion

# Batch Runs



- Jobs to Process Transactions (if necessary)
- Report Output to Validate Transaction Input
- Compare to Legacy Report
- Identify Differences and Reasons

Some Processes May Require More Than One Day

Conversion



# FAT Cycle 3 – Engage the Business

- Follow Process
- Transaction Input by Actual Users
  - Significant Percentage of User Base
  - All Transactions
  - Standard Training Completed Prior to Test

## FAT Cycle 3 – Engage the Business

- Users at Locations Using Actual Equipment
- SME's – Guidance Only
- Help Desk Process in Place
- Results Input to Go/No-Go Meeting

# FAT Cycle 2 – Exercise the System

- Follow FAT Process
- Transaction Input by SME's
  - All Transactions
  - Training Completed Prior to Test
  - Full Validation



# FAT Cycle 2 – Exercise the System

- Utilize Collected Business Documents
- Transactions Entered at One Site

Most Issues Found Here

# FAT Cycle 1- Prove the Test

- Follow FAT Process
- Transaction Input by Core Team
  - Small Sample of Transactions
  - Validation Generally “Sniff Test”

# FAT Cycle 1- Prove the Test

- Utilize Collected Business Documents
  - Collect All Documents – Practice for Later
- Test of the Technical Environment

Demonstrate a Valid Test

# Final Acceptance Test

- Demonstration of Test Results – Real World
- Business Demonstration of Readiness
- Roadmap to Implementation
- Basis for Implementation Decision

FAT 3 Like First Day of Production