

Leveraging Technology to Enhance PeopleSoft Web Services (SOA)

System Efficiency

Lorne Kaufman, Managing Director

Technology Deployment for PeopleSoft

To Deploy or Not to Deploy

- Can a technology deployment be strategic?
- What technologies are available for consideration?
- What are some of the benefits to be realized?

Technology Deployment for PeopleSoft

Can Technology Be Considered Strategic?

- Definition: A strategy is a long term plan of action designed to achieve a particular goal
- Technology should be utilized as a vehicle to deliver value
- Business case development based on return on investment
- Deploy only what is needed vs. deploying technology because it exists

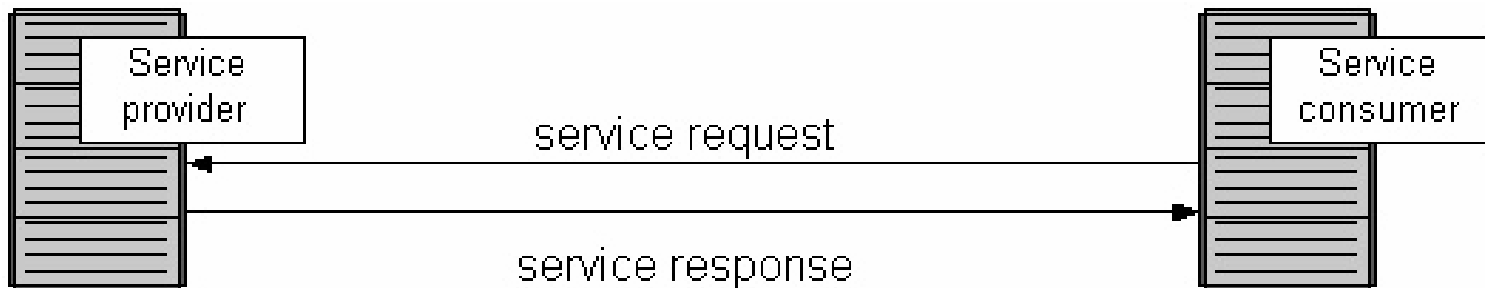
Technology Deployment for PeopleSoft

What technologies should be considered?

- Service-Oriented Architecture (SOA)
 - (Fusion will be delivered on this platform)
- Web Services

What is a Web Service & SOA

- The term Web services describes a standardized way of integrating Web-based applications using the XML, SOAP, WSDL and UDDI open standards over an Internet protocol backbone
- SOA is collection of services that communicate with each other utilizing a standard protocol/language (Fax machines)



Sample of SOA/Web Services

Demonstration

[Housing Maps](#)

Pre-SOA Software
(ERP, CRM, SCM)

Applications



Home Grown



Legacy



Collaborative Tools



Business Intelligence

Infrastructure



Portal



Application Servers



LDAP



EAI, B2B Integration

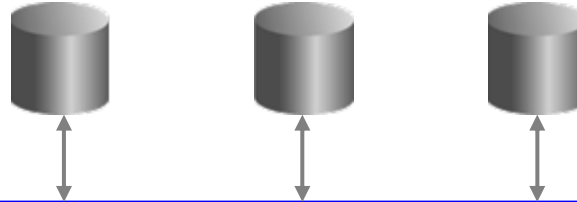


Databases



SOA & Web Services

OTHER APPLICATIONS



CORPORATE NETWORK

Web Services

- Orders
- Leads
- Cases
- Customers
- Tasks



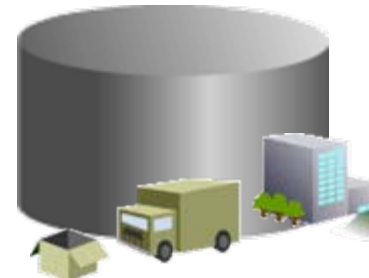
CRM

- Invoices
- Payments
- Financial sanctions (OFAC*)



FMS

- Procure-to-pay
- Vendor validation



SCM

- Recruiting
- Person
- Job data
- Demographic data



HCM

Sample Web-Services

Consumable Web Services

- [D&B Business Verification 006991673](#)
- [Address Verification](#)
- [Example of how to consume a Web Service](#)

What is a Component Interface

The screenshot displays the Oracle Application Designer interface for defining a Component Interface. The main window is titled "Application Designer - Untitled - [Component Interface2 (Component Interface)]".

Left Panel (Component Tree):

- SDK_CI_SAMPLES (Component)
 - SDK_PER_SRCHGBL (View) - Search Record
 - Scroll - Level 0
 - SDK_PER_SRCHGBL (View)
 - SDK_DERIVED (Derived)
 - SDK_INSTALL (Table)
 - Scroll - Level 1 Primary Record: SDK_BUS_EX
 - SDK_BUS_EXP_PER (Table)
 - SDK_DERIVED (Derived)
 - Scroll - Level 2 Primary Record: SDK_BUS

Right Panel (Component Interface Definition Table):

Name	Record	Field	Re...	Co...
GETKEYS				
SDK_EMPLID	SDK_PER_SR...	SDK_EMPLID		
FINDKEYS				
SDK_EMPLID	SDK_PER_SR...	SDK_EMPLID		
SDK_LAST_NAME_...	SDK_PER_SR...	SDK_LAST_...		
SDK_NAME	SDK_PER_SR...	SDK_NAME		
METHODS				
Cancel				
Find				
Get				
Save				

Bottom Panel (Validation Log):

```

Begin validating Component Interface integrity
No errors found.
End Component Interface validation
    
```

Navigation buttons: Build, Upgrade, Results, **Validate**

Status: Ready

Sample Web-Services

Publishable Web Services

- Any Component in the System Can Become a Web Service
- Pages >> Component >> Component Interface >> Web Service
- Convert Component Interface into a Service

Personal Data Inquiry

- Expose WDSL to another application inside or outside your enterprise

Why Use Web Services

The Many Benefits of Web Services

- **Loosely Coupled Applications**
 - The impact that two modules have on one another
- **Location Transparency**
 - The consumer of the service doesn't care where the implementation of the service resides
- **Code Reuse**
 - List of services can be discovered dynamically (using UDDI). The list of exposed methods, along with the required parameters and their types, are available through a WSDL document
- **Better Scalability**
 - Spread the implementation of the service across a number of servers
- **Higher Availability**
 - Location transparency also provides for greater levels of availability
- **Building Multi-Service Applications**
 - Build a single application with multiple subscribed services

Acronym Trivia

UDDI

Universal Description Discovery & Integration

LDAP

Light Weight Directory Application Protocol

XSLT

Extensible Stylesheet Language Transformation

XML

Extensible Markup Language

WSDL

Web Services Description Language

SOA

Service-Oriented Architecture

SOAP

Simple Object Access Protocol

WAF

We Are Finished!!!!

Questions?