

# Discoverer Your OPM Month End Closing

Robert Smith

ABeam Consulting

# Learning Objectives

- As a result of this presentation, you will be able to:
  - Understand the basics to identify data your company could use
  - Understand the basics to create a custom End User Layer (EUL)
  - Understand the basics to create a Business Area
  - Understand the basics to create a new Discoverer report

# Speaker Qualifications

- **Robert Smith** is a CPA who is currently a Senior Consultant with ABeam Consulting.
- Spent the last 14 years in the process manufacturing industry as a user and consultant.
- Speaks frequently on the capabilities of OPM and its integration with Oracle Applications

# Presentation Agenda

- Rules of the Game
- Areas Discoverer Can be Helpful
- End User Layers
- Identifying Data Needed
- Business Areas
- Create Simple Report
- Lessons Learned
- Q&A

# Rules of the Game

- There is no such thing as a dumb question
- Ask questions when you think of them, but they may not be answered until the end
- Be respectful
- Have fun!

# Areas Discoverer Can be Helpful

- Month end closing
  - Are all transactions completed and entered?
  - Allow for exception reporting
  - Allow for report to be exported to Excel
  - Extend the seeded reports functionality
- Module Specific Examples

# Purchasing

- Anticipated receipt review
- PPV analysis

# Accounts Payable

- Accounts Payable Account Analysis
- Unaccounted transactions
- Supplier reviews



# Accounts Receivable

- Accounts Receivable Reconciliation details
- Customer review information
- Custom aging reports

# Order Management

- Pending shipments
- Compare list price to sales order price
- Compare sales order price to item standard cost

# OPM Inventory

- Review pending transactions
- Review transactions by type and code
- Inventory valuation reports
- Perpetual view of inventory showing quantities by transaction category
- Inventory transfer review

# OPM Production

- Batch status review
- Production variance (Manufacturing view)

# OPM MAC

- Preliminary and final subledgers
  - Variances (Accounting view)
  - Account review before go to GL
  - Subledger errors

# OPM Costing

- Item cost review between periods
- Inventory revaluation reports

# End User Layers (EUL)

- When install Oracle Discoverer a default EUL is loaded and ready to use
  - Pros – Ready to use
  - Cons – Probably not joined exactly how your business is configured and will need to modify
- Option is to create custom EUL
  - Pros – You control what is in the EUL
  - Cons – You have to maintain

# Create EUL

- Log into Discoverer Administrator connecting to database as <database account: e.g. APPS>/<pwd>; it should popup a window that says there are no EUL's available to this user do you want to create one – click Yes.
- You **MUST** set the *New EUL is for use by Oracle Applications users ONLY* checked.
- Enter the Schema/Password that contains the FND tables – this has to be set to APPS/<pwd> and click Finish
- Depending on your network this creating EUL may take some time. Experience has shown anywhere from less than 5 minutes to around 20 minutes.



# Identifying Data Needed

- Users come up with data needed
  - Strategic (used on consistent basis)
  - Necessity (true one time Ad-hoc)
- Document the need (Functional Spec)
  - Description of what report is used for
  - Business flow using report
  - Fields required on report and screen shots of where in application data resides
  - Report header information
  - Report field layout
  - Field sorting
  - Report totals, sub-totals

# Identifying Data Needed

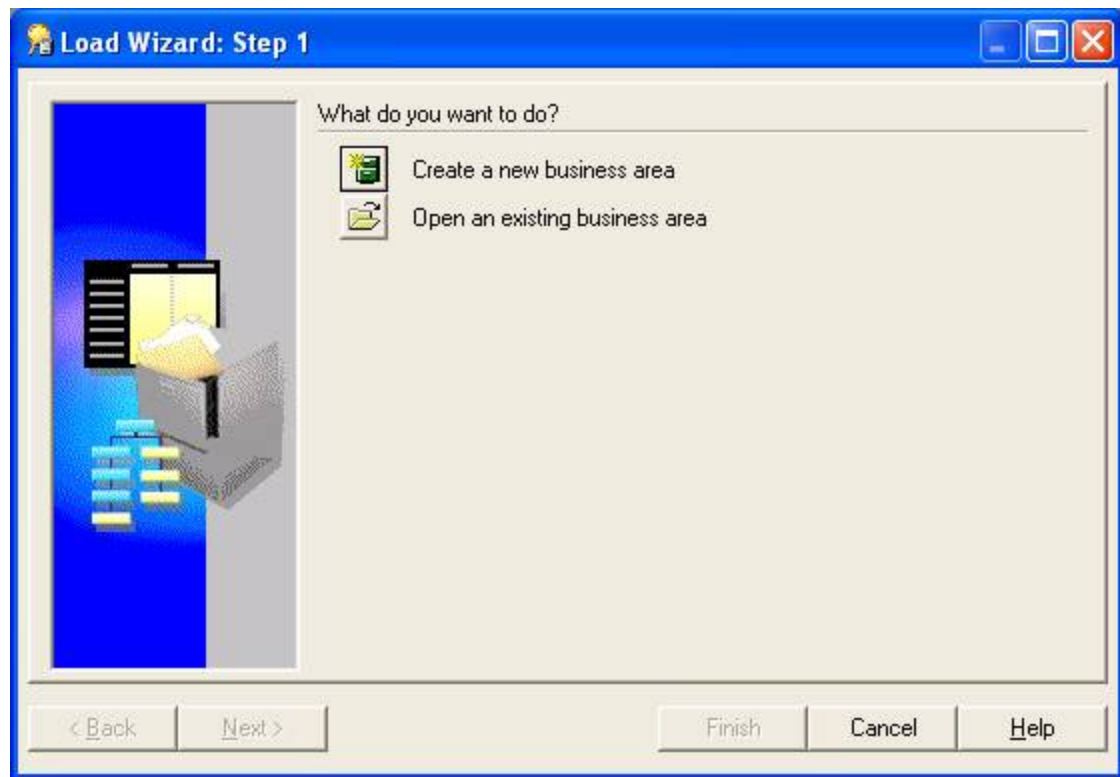
- Discoverer Administrator review (Technical Spec)
  - Identify tables for data
  - Identify joins needed to link necessary tables
  - Sample of data returned to make sure data is what is expected (example query in Toad)
- Determine if existing business area in EUL exists

# Business Areas

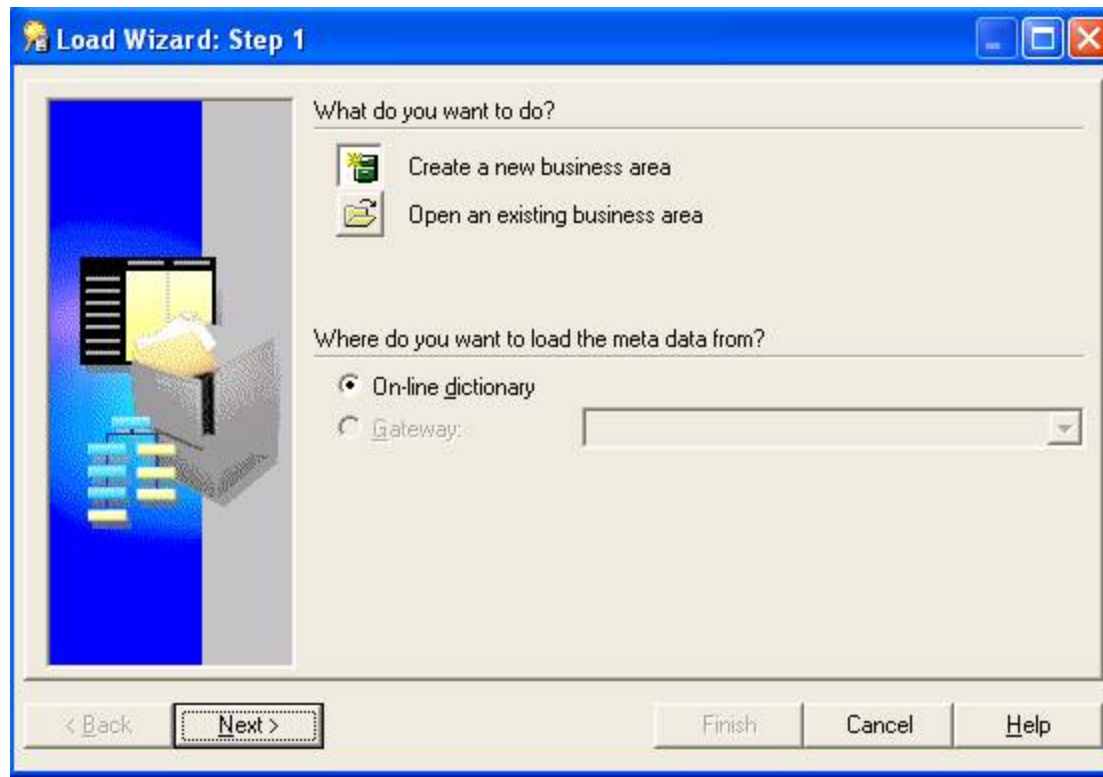
- Example report request
  - Batch Number, Batch Status, and Item Number of the Products of the Batch for batch in WIP status.
- Discoverer Administrator review found
  - Tables
    - GME.GME\_BATCH\_HEADER
    - GME.GME\_MATERIAL\_DETAILS
    - GMI.IC\_ITEM\_MST\_B
  - No business area exists with these tables

# Create Business Areas

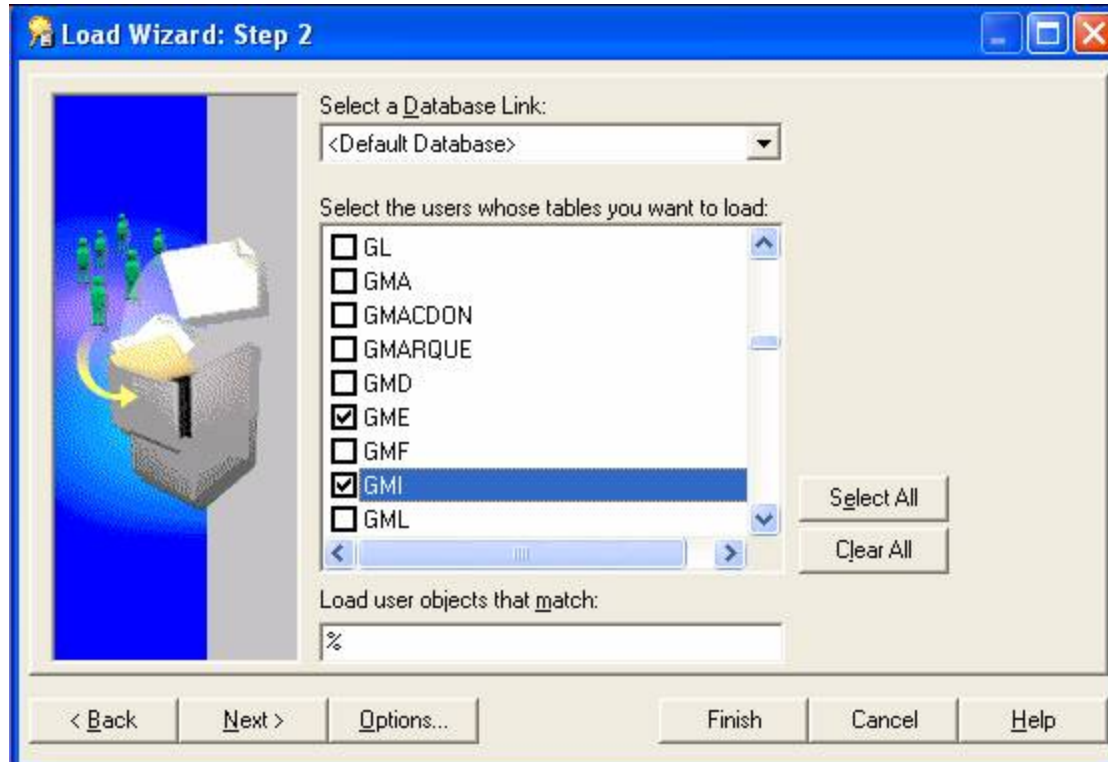
- Logon to Discoverer Administrator



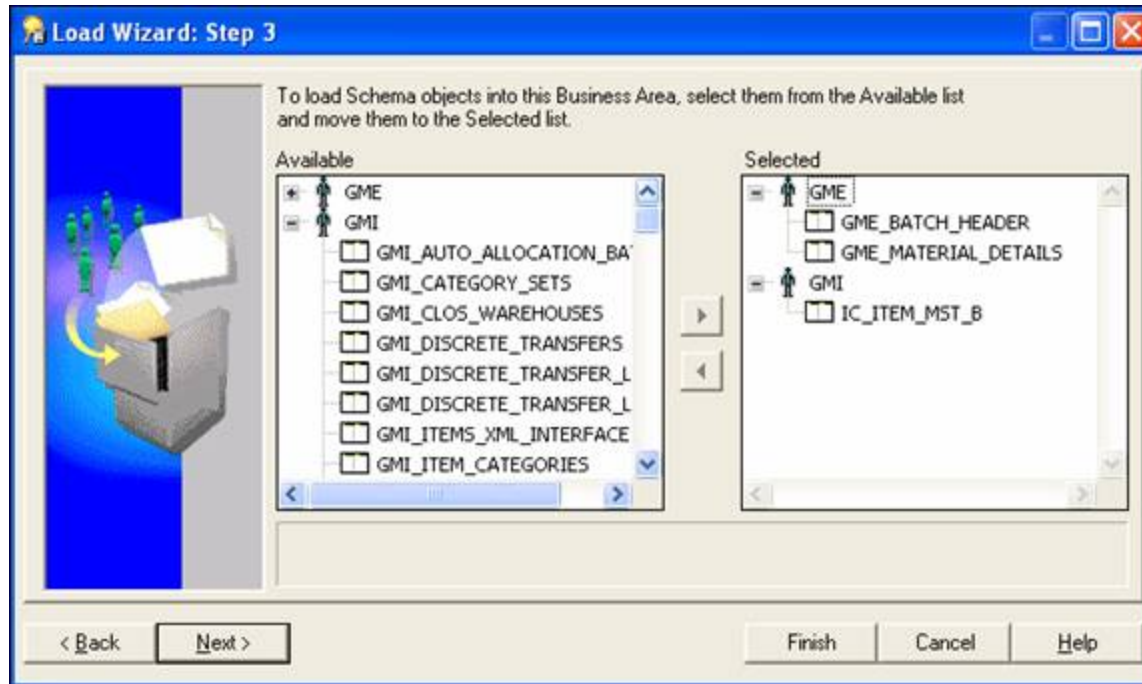
# Create Business Areas



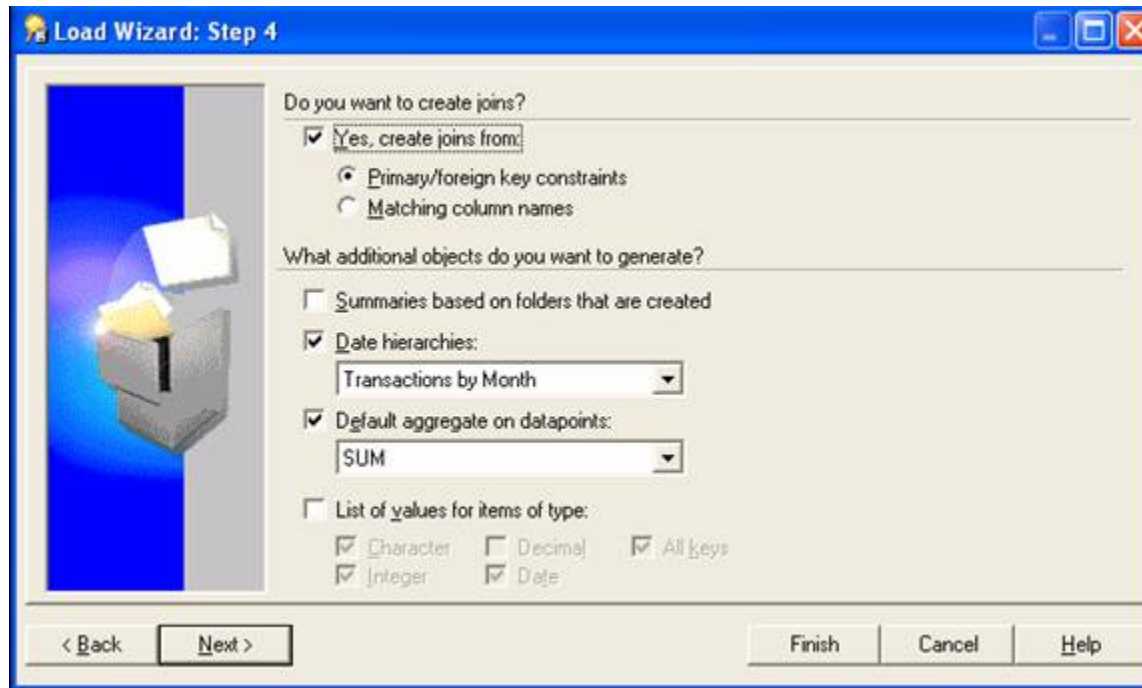
# Create Business Areas



# Create Business Areas

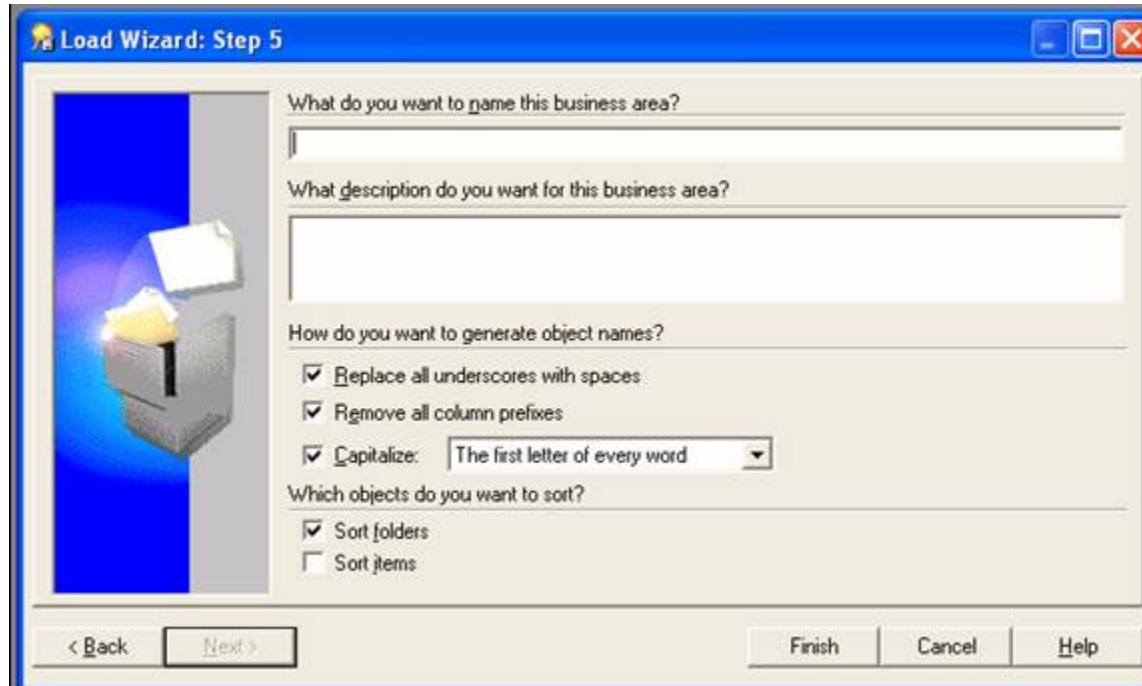


# Create Business Areas

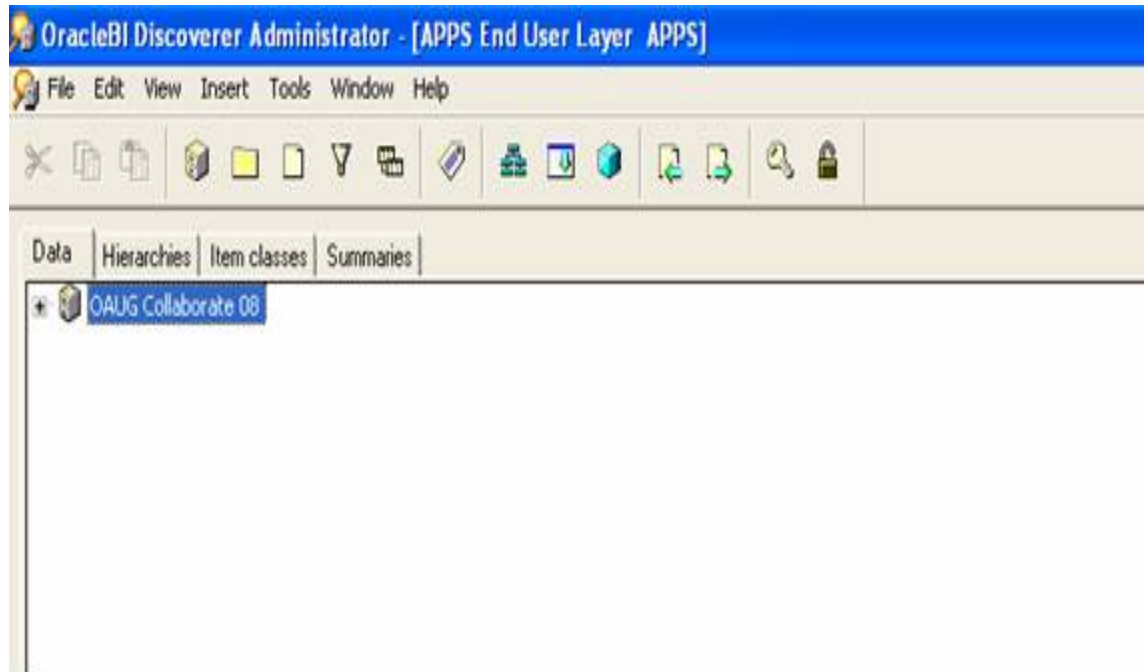




# Create Business Areas

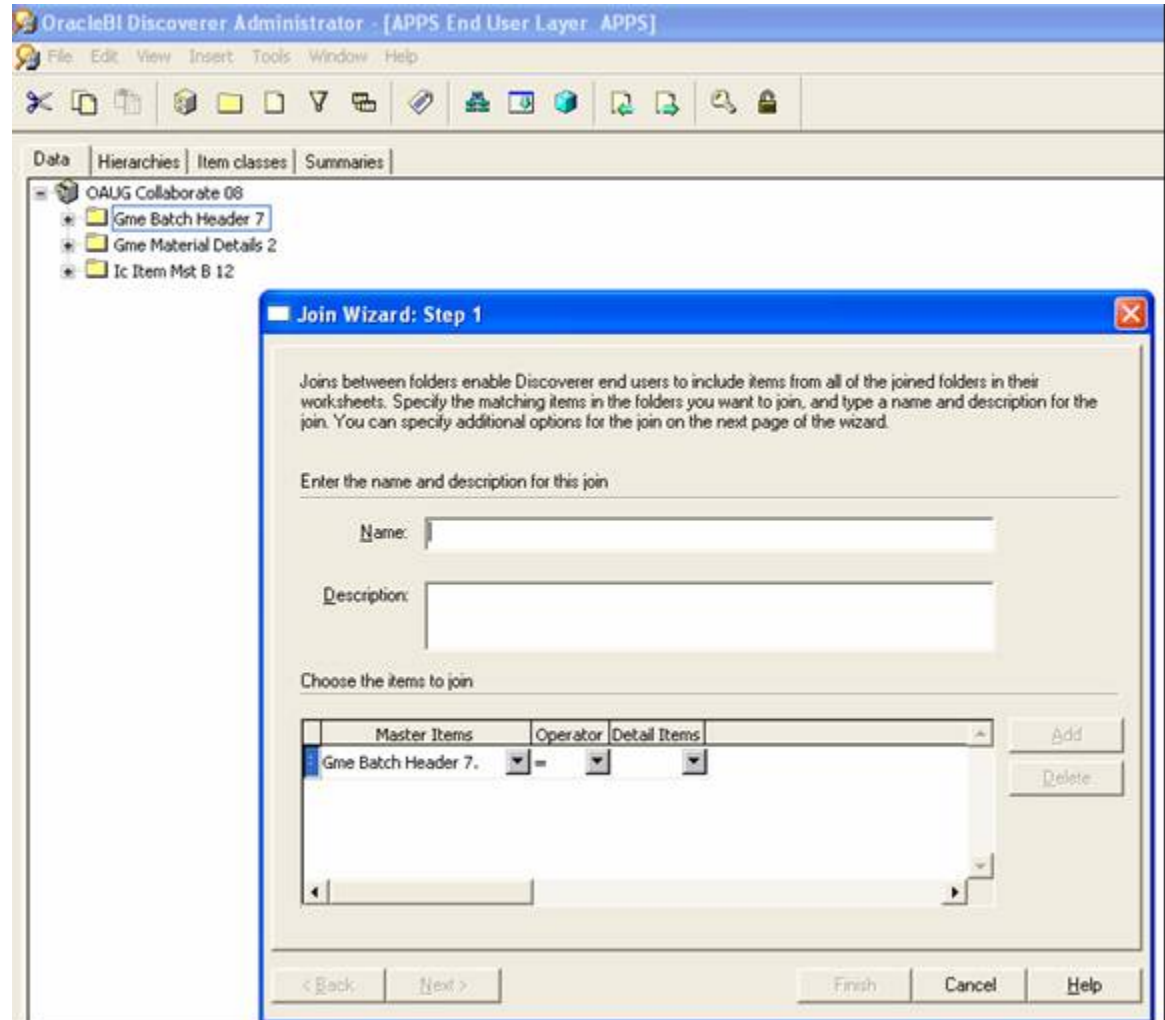


# Create Business Areas



# Create Business Areas

- Create Joins  
(Insert>Joins)



# Create Business Areas

**Join Wizard: Step 1**

Joins between folders enable Discoverer end users to include items from all of the joined folders in their worksheets. Specify the matching items in the folders you want to join, and type a name and description for the join. You can specify additional options for the join on the next page of the wizard.

Enter the name and description for this join

Name:

Description:

Choose the items to join

Master Items	Operator	Detail Items
Gme Batch Header 7.Batch Id	=	Gme Material Details 2.Batch Id

< Back    Next >    Finish    Cancel    Help

# Create Business Areas

**Join Wizard: Step 2**

These settings might affect both the use of summary folders and the number of rows returned from a query. If you are not sure which setting to select, click Help

Choose the join details

- Detail item values always exist in master folder [Typical]
- Detail item values might not exist in master folder

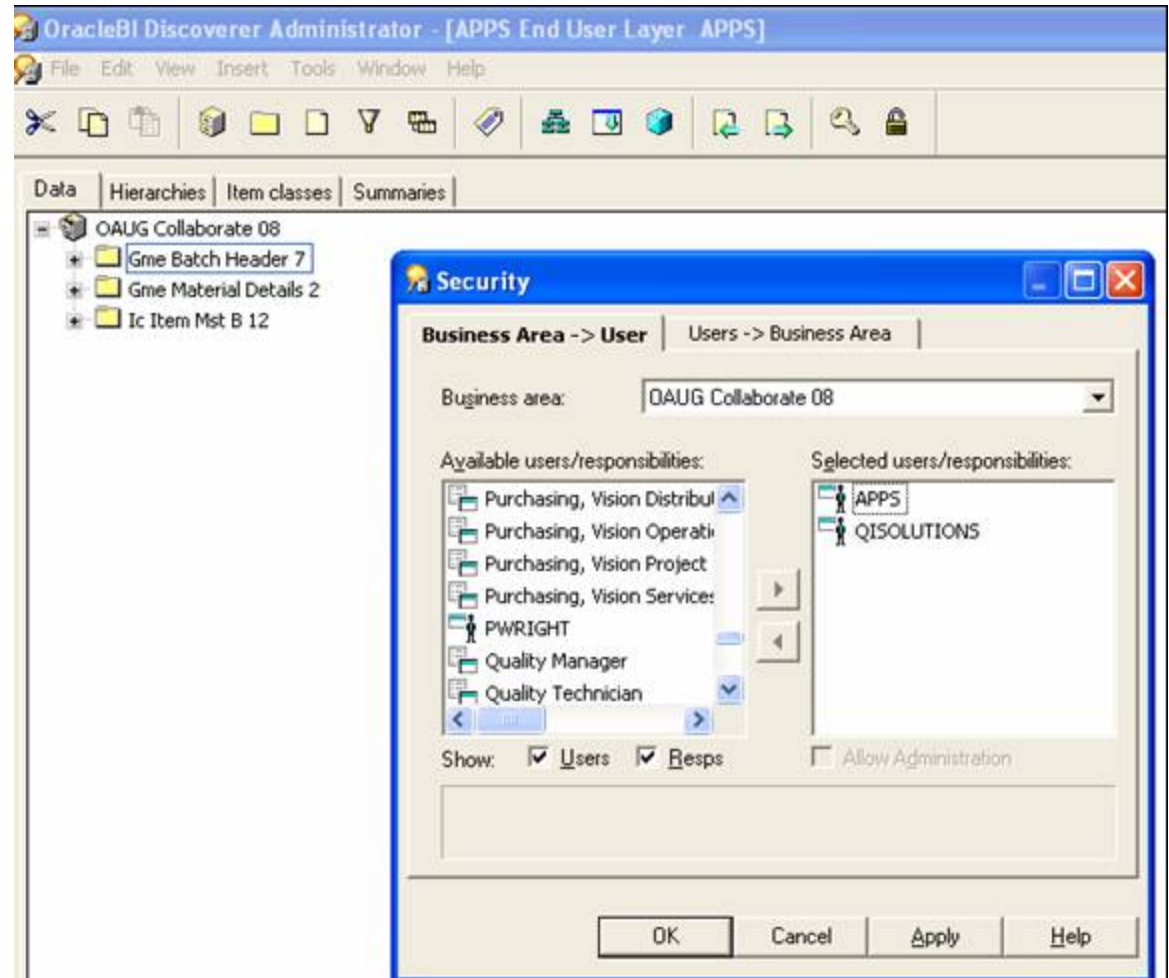
Choose any optional join configurations

- No outer joins
- Outer join on detail
- Outer join on master
- One to one join relationship between master and detail

< Back    Next >    Finish    Cancel    Help

# Create Business Areas

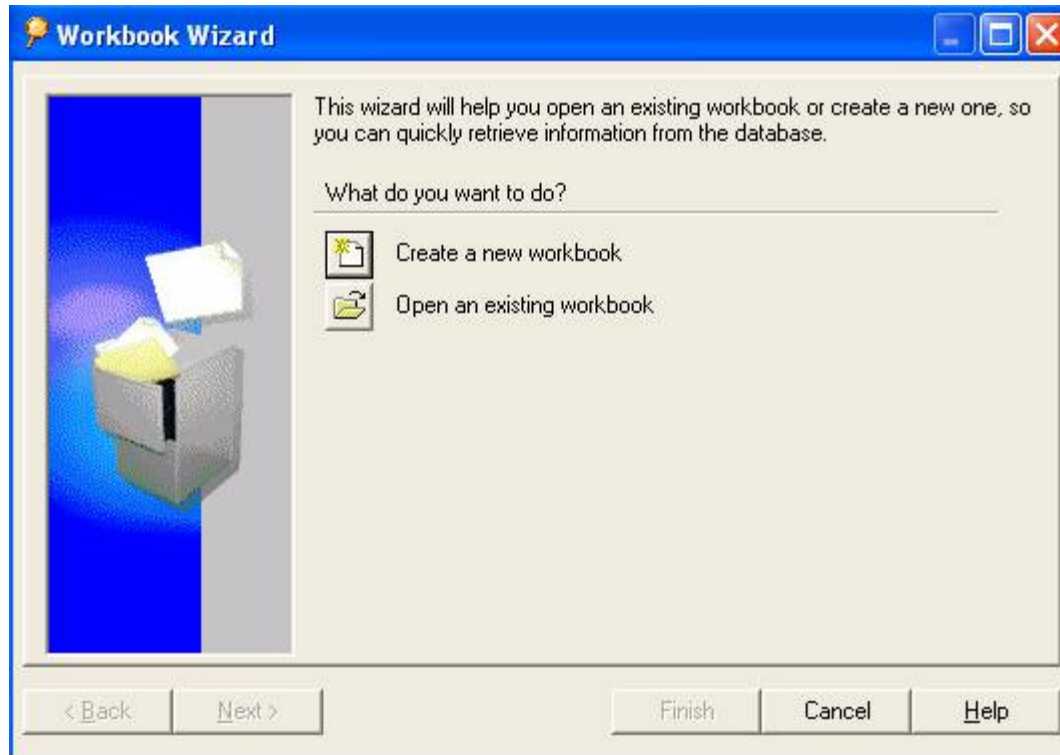
- Grant access to business area (Tools>Security)



# Create Report

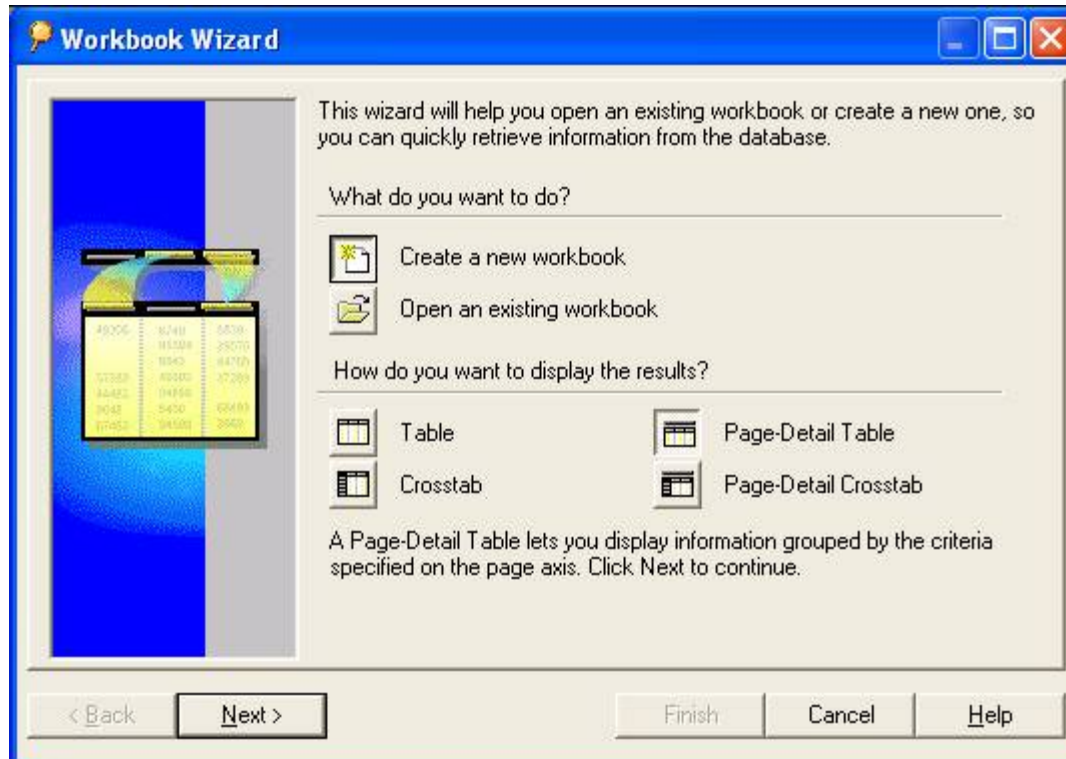
- Example report request
  - Batch Number, Batch Status, and Item Number of the Products of the Batch for batch in WIP status

# Create Report

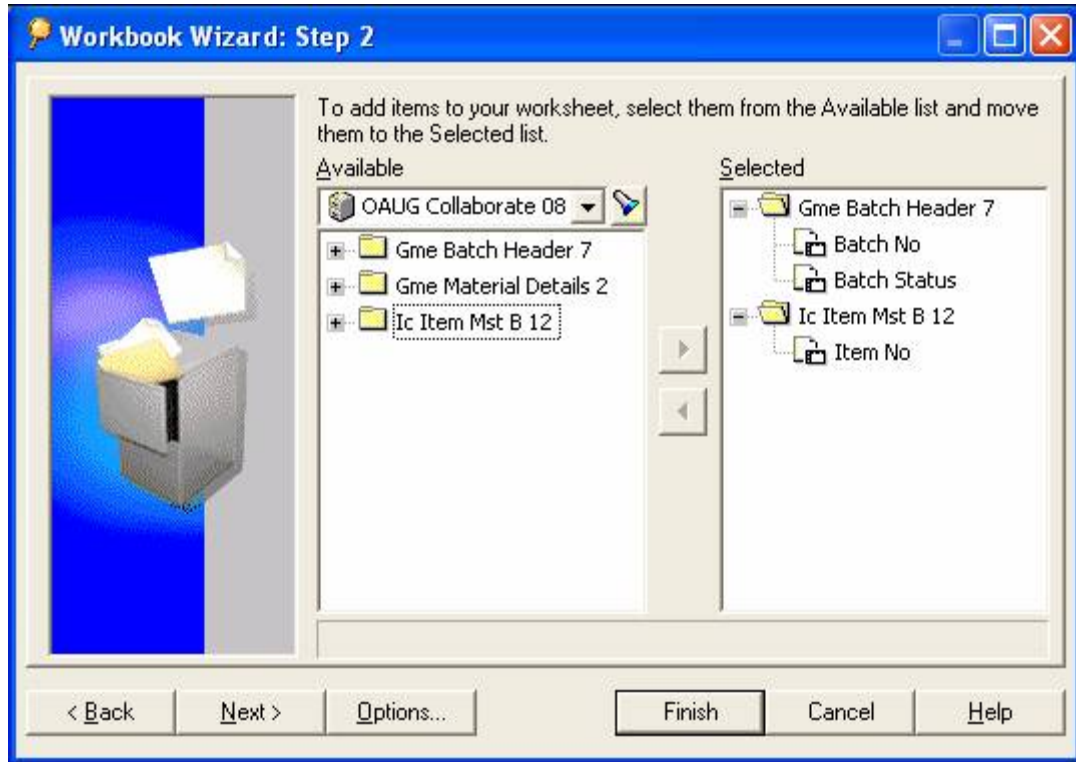




# Create Report



# Create Report



# Create Report

Workbook Wizard: Step 4

New Condition

Name:   Generate name automatically

Description:

Location:

Formula

Enter a numeric value or select from the drop list. Multiple values must be separated with commas.

Item	Condition	Value(s)
Batch Status	=	3

Match case

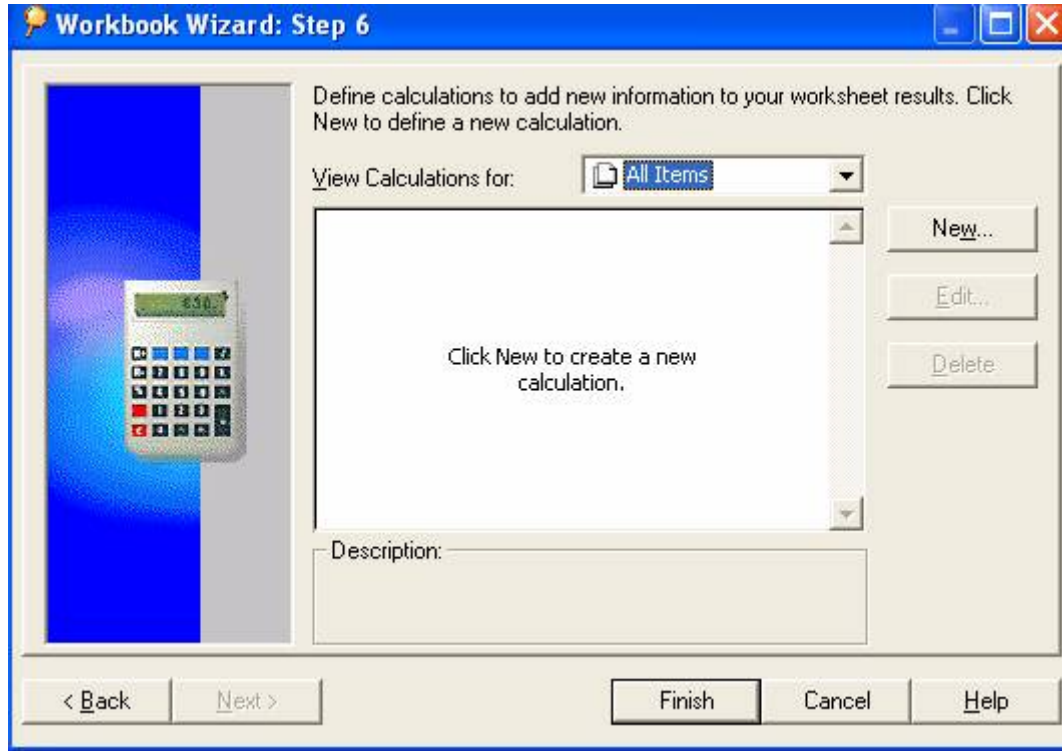
Advanced >>

OK Cancel Help

# Create Report



# Create Report



# Create Report

Oracle Business Intelligence Discoverer Desktop - [Workbook1]

File Edit View Sheet Format Tools Graph Window Help

Double-click here to edit this title.

Page Items:

Batch No	Batch Status	Item No
00035805	3	ITEM A
00055695	3	ITEM A
00056060	3	ITEM A
00056062	3	ITEM A
00056155	3	ITEM A
00056626	3	ITEM A
00057222	3	ITEM A
00057226	3	ITEM A
00057275	3	ITEM A
00057335	3	ITEM A
00057403	3	ITEM A
00057748	3	ITEM A
00058763	3	ITEM A

# Lessons Learned

- Make sure you know what the user really wants before the report is developed. This is just like with Oracle report development. The biggest risk here is wasted time developing something not wanted.
- Utilize resources. The technical resources within your company can assist in helping understand tables and joins. Once the basic understanding is there business areas can become more complex. Also use Oracle Press Oracle Discoverer 10g Handbook.
- Test queries thoroughly before releasing to general user population. The risk here is the report tests positive in development, but fails in the field. This is the fastest way for users to develop the feeling that Oracle is wrong.
- Trust users. After awhile users will be able to generate their own reports. This is highly dependant on the strength of the business area design.

# Discoverer Your OPM Month End Closing Q&A

Robert Smith  
rsmith@abeam.com